

For Research Use Only

# CBS Monoclonal antibody, PBS Only

Catalog Number: 67861-1-PBS



## Basic Information

Catalog Number:

67861-1-PBS

Size:

1mg/ml

Source:

Mouse

Isotype:

IgG2b

Immunogen Catalog Number:

AG7008

GenBank Accession Number:

BC000440

GeneID (NCBI):

875

UNIPROT ID:

P35520

Full Name:

cystathionine-beta-synthase

Calculated MW:

61 kDa

Observed MW:

61-63 kDa

Purification Method:

Protein A purification

CloneNo.:

1E4F10

## Applications

Tested Applications:

WB, IF, IHC, Indirect ELISA

Species Specificity:

Human, rat

## Background Information

The CBS gene encodes cystathionine beta-synthase, which catalyzes the first irreversible step of transsulfuration. The CBS enzyme is a homotetramer of 63-kD subunits and requires pyridoxal phosphate and heme for activity (PMID:11230183). CBS protein is localized in most areas of the brain, but predominantly in the cell bodies and neuronal processes of Purkinje cells and Ammon's horn neurons (PMID:12588964).

## Storage

Storage:

Store at -80°C.

Storage Buffer:

PBS Only

For technical support and original validation data for this product please contact:

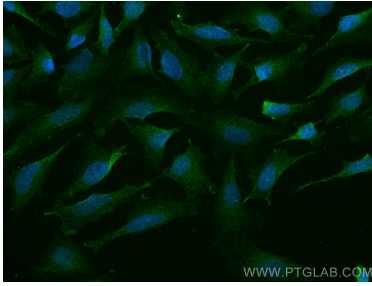
T: 4006900926

E: [Proteintech-CN@ptglab.com](mailto:Proteintech-CN@ptglab.com)

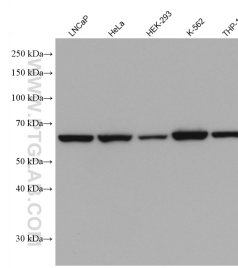
W: [ptgcn.com](http://ptgcn.com)

This product is exclusively available under Proteintech Group brand and is not available to purchase from any other manufacturer.

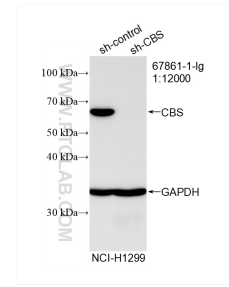
## Selected Validation Data



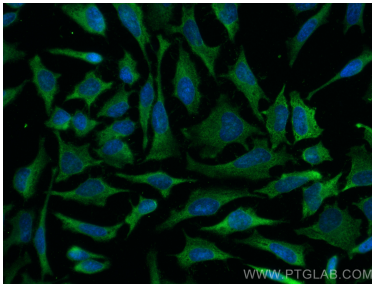
Immunofluorescent analysis of (4% PFA) fixed HeLa cells using CBS antibody (67861-1-Ig, Clone: 1E4F10) at dilution of 1:800 and CoraLite®488-Conjugated AffiniPure Goat Anti-Mouse IgG(H+L). This data was developed using the same antibody clone with 67861-1-PBS in a different storage buffer formulation.



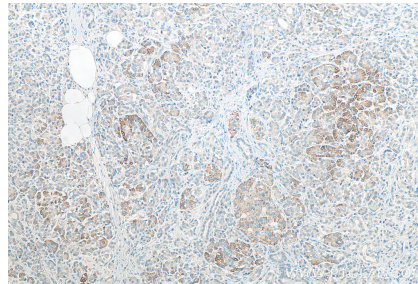
Various lysates were subjected to SDS PAGE followed by western blot with 67861-1-Ig (CBS antibody) at dilution of 1:20000 incubated at room temperature for 1.5 hours. This data was developed using the same antibody clone with 67861-1-PBS in a different storage buffer formulation.



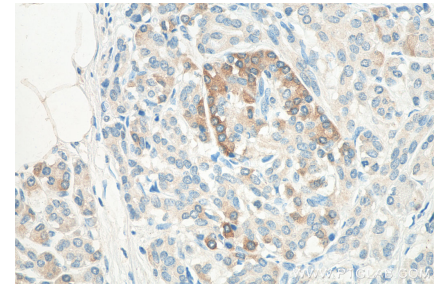
WB result of CBS antibody (67861-1-Ig; 1:12000; incubated at room temperature for 1.5 hours) with sh-Control and sh-CBS transfected NCI-H1299 cells. This data was developed using the same antibody clone with 67861-1-PBS in a different storage buffer formulation.



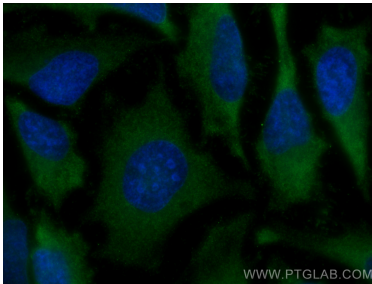
Immunofluorescent analysis of (-20°C Methanol) fixed HeLa cells using CBS antibody (67861-1-Ig, Clone: 1E4F10) at dilution of 1:800 and CoraLite®488-Conjugated AffiniPure Goat Anti-Mouse IgG(H+L). This data was developed using the same antibody clone with 67861-1-PBS in a different storage buffer formulation.



Immunohistochemical analysis of paraffin-embedded human pancreas cancer tissue slide using 67861-1-Ig (CBS antibody) at dilution of 1:1000 (under 10x lens). Heat mediated antigen retrieval with Tris-EDTA buffer (pH 9.0). This data was developed using the same antibody clone with 67861-1-PBS in a different storage buffer formulation.



Immunohistochemical analysis of paraffin-embedded human pancreas cancer tissue slide using 67861-1-Ig (CBS antibody) at dilution of 1:1000 (under 40x lens). Heat mediated antigen retrieval with Tris-EDTA buffer (pH 9.0). This data was developed using the same antibody clone with 67861-1-PBS in a different storage buffer formulation.



Immunofluorescent analysis of (-20°C Methanol) fixed HeLa cells using CBS antibody (67861-1-Ig, Clone: 1E4F10) at dilution of 1:800 and CoraLite®488-Conjugated AffiniPure Goat Anti-Mouse IgG(H+L). This data was developed using the same antibody clone with 67861-1-PBS in a different storage buffer formulation.