

For Research Use Only

# CBS Monoclonal antibody

Catalog Number: 67861-1-Ig

Featured Product

2 Publications



## Basic Information

**Catalog Number:**

67861-1-Ig

**Size:**

1000 µg/ml

**Source:**

Mouse

**Isotype:**

IgG2b

**Immunogen Catalog Number:**

AG7008

**GenBank Accession Number:**

BC000440

**GeneID (NCBI):**

875

**UNIPROT ID:**

P35520

**Full Name:**

cystathionine-beta-synthase

**Calculated MW:**

61 kDa

**Observed MW:**

61-63 kDa

**Purification Method:**

Protein A purification

**CloneNo.:**

1E4F10

**Recommended Dilutions:**

WB 1:5000-1:50000

IHC 1:500-1:2000

IF 1:400-1:1600

## Applications

**Tested Applications:**

WB, IF/ICC, IHC, ELISA

**Cited Applications:**

WB

**Species Specificity:**

Human, rat

**Cited Species:**

rat

**Note-IHC: suggested antigen retrieval with TE buffer pH 9.0; (\*) Alternatively, antigen retrieval may be performed with citrate buffer pH 6.0**

**Positive Controls:**

**WB** : LNCaP cells, HEK-293 cells, Jurkat cells, K-562 cells, NCI-H1299 cells, HeLa cells, THP-1 cells

**IHC** : human pancreas cancer tissue,

**IF** : HeLa cells,

## Background Information

The CBS gene encodes cystathionine beta-synthase, which catalyzes the first irreversible step of transsulfuration. The CBS enzyme is a homotetramer of 63-kD subunits and requires pyridoxal phosphate and heme for activity (PMID:11230183). CBS protein is localized in most areas of the brain, but predominantly in the cell bodies and neuronal processes of Purkinje cells and Ammon's horn neurons (PMID:12588964).

## Notable Publications

Author	Pubmed ID	Journal	Application
Jiexian Du	35483194	Biomed Pharmacother	WB
Magdalena Górný	37646112	FEBS J	WB

## Storage

**Storage:**

Store at -20°C. Stable for one year after shipment.

**Storage Buffer:**

PBS with 0.02% sodium azide and 50% glycerol pH 7.3.

Aliquoting is unnecessary for -20°C storage

For technical support and original validation data for this product please contact:

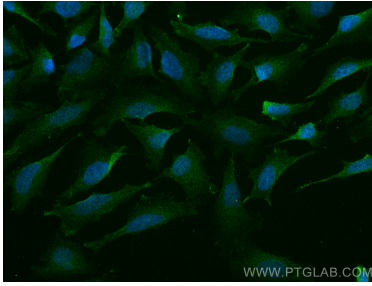
T: 4006900926

E: Proteintech-CN@ptglab.com

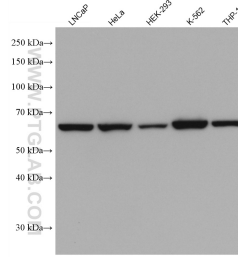
W: ptgcn.com

**This product is exclusively available under Proteintech Group brand and is not available to purchase from any other manufacturer.**

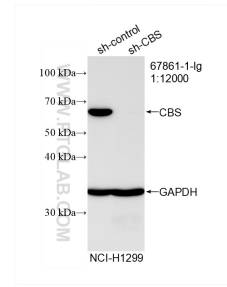
## Selected Validation Data



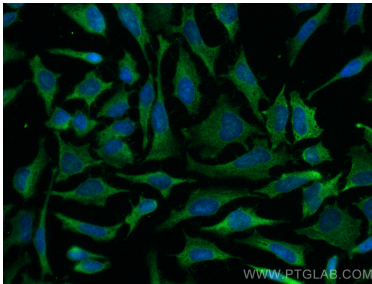
Immunofluorescent analysis of (4% PFA) fixed HeLa cells using CBS antibody (67861-1-Ig, Clone: 1E4F10) at dilution of 1:800 and CoraLite®488-Conjugated AffiniPure Goat Anti-Mouse IgG(H+L).



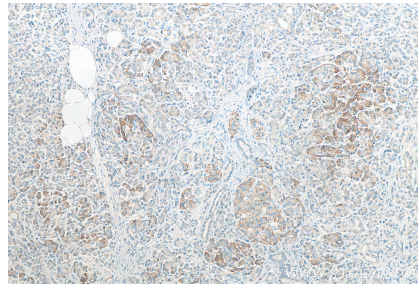
Various lysates were subjected to SDS PAGE followed by western blot with 67861-1-Ig (CBS antibody) at dilution of 1:20000 incubated at room temperature for 1.5 hours.



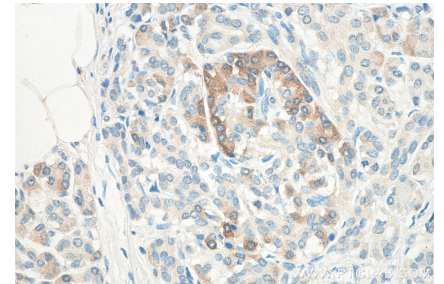
WB result of CBS antibody (67861-1-Ig; 1:12000; incubated at room temperature for 1.5 hours) with sh-Control and sh-CBS transfected NCI-H1299 cells.



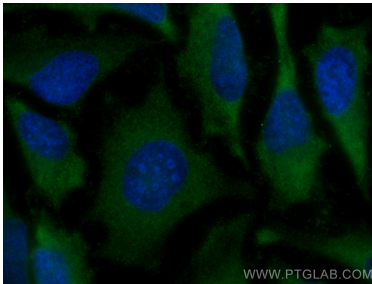
Immunofluorescent analysis of (-20°C Methanol) fixed HeLa cells using CBS antibody (67861-1-Ig, Clone: 1E4F10) at dilution of 1:800 and CoraLite®488-Conjugated AffiniPure Goat Anti-Mouse IgG(H+L).



Immunohistochemical analysis of paraffin-embedded human pancreas cancer tissue slide using 67861-1-Ig (CBS antibody) at dilution of 1:1000 (under 10x lens). Heat mediated antigen retrieval with Tris-EDTA buffer (pH 9.0).



Immunohistochemical analysis of paraffin-embedded human pancreas cancer tissue slide using 67861-1-Ig (CBS antibody) at dilution of 1:1000 (under 40x lens). Heat mediated antigen retrieval with Tris-EDTA buffer (pH 9.0).



Immunofluorescent analysis of (-20°C Methanol) fixed HeLa cells using CBS antibody (67861-1-Ig, Clone: 1E4F10) at dilution of 1:800 and CoraLite®488-Conjugated AffiniPure Goat Anti-Mouse IgG(H+L).