

For Research Use Only

GIT2 Monoclonal antibody, PBS Only

Catalog Number: 67858-1-PBS



Basic Information

Catalog Number:

67858-1-PBS

Size:

1 mg/ml

Source:

Mouse

Isotype:

IgG1

Immunogen Catalog Number:

AG0321

GenBank Accession Number:

BC001379

GeneID (NCBI):

9815

UNIPROT ID:

Q14161

Full Name:

G protein-coupled receptor kinase
interacting ArfGAP 2

Calculated MW:

95 kDa

Observed MW:

70-85 kDa

Purification Method:

Protein G purification

CloneNo.:

2D9C5

Applications

Tested Applications:

WB, Indirect ELISA, IHC

Species Specificity:

Human, rat

Background Information

Storage

Storage:

Store at -80°C.

The product is shipped with ice packs. Upon receipt, store it immediately at -80°C

Storage Buffer:

PBS Only

For technical support and original validation data for this product please contact:

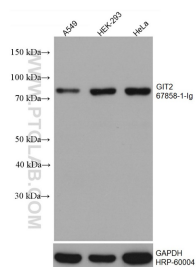
T: 4006900926

E: Proteintech-CN@ptglab.com

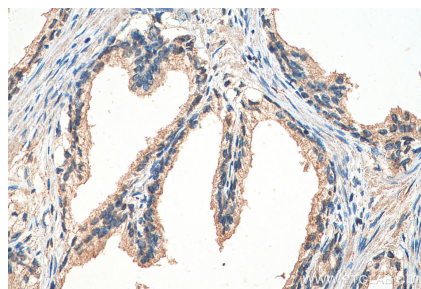
W: ptgcn.com

This product is exclusively available under Proteintech Group brand and is not available to purchase from any other manufacturer.

Selected Validation Data



Various lysates were subjected to SDS PAGE followed by western blot with 67858-1-Ig (GIT2 antibody) at dilution of 1:10000 incubated at room temperature for 1.5 hours. The membrane was stripped and reblotted with HRP-conjugated GAPDH Monoclonal antibody (HRP-60004) as loading control. This data was developed using the same antibody clone with 67858-1-PBS in a different storage buffer formulation.



Immunohistochemical analysis of paraffin-embedded human prostate cancer tissue slide using 67858-1-Ig (GIT2 antibody) at dilution of 1:1000 (under 40x lens). Heat mediated antigen retrieval with Tris-EDTA buffer (pH 9.0). This data was developed using the same antibody clone with 67858-1-PBS in a different storage buffer formulation.