

For Research Use Only

EFTUD2 Monoclonal antibody

Catalog Number: 67855-1-Ig

Featured Product

1 Publications



Basic Information

Catalog Number:

67855-1-Ig

Size:

1000 µg/ml

Source:

Mouse

Isotype:

IgG1

Immunogen Catalog Number:

AG24345

GenBank Accession Number:

BC002360

GeneID (NCBI):

9343

UNIPROT ID:

Q15029

Full Name:

elongation factor Tu GTP binding domain containing 2

Calculated MW:

116 kDa

Observed MW:

109-120 kDa

Purification Method:

Protein G purification

CloneNo.:

2F4G2

Recommended Dilutions:

WB 1:5000-1:50000

IHC 1:500-1:2000

IF/ICC 1:400-1:1600

Applications

Tested Applications:

IF, IHC, WB, ELISA

Cited Applications:

WB

Species Specificity:

Human, mouse, rat

Cited Species:

human

Note-IHC: suggested antigen retrieval with TE buffer pH 9.0; (*) Alternatively, antigen retrieval may be performed with citrate buffer pH 6.0

Positive Controls:

WB : LNCaP cells, HeLa cells, HEK-293 cells, Jurkat cells, K-562 cells, HSC-T6 cells, PC-12 cells, NIH/3T3 cells, RAW 264.7 cells

IHC : human liver cancer tissue, human colon cancer tissue

IF/ICC : HeLa cells,

Background Information

Notable Publications

Author	Pubmed ID	Journal	Application
Xiaojian Zhu	38163859	J Exp Clin Cancer Res	WB

Storage

Storage:

Store at -20°C. Stable for one year after shipment.

Storage Buffer:

PBS with 0.02% sodium azide and 50% glycerol pH 7.3.

Aliquoting is unnecessary for -20°C storage

For technical support and original validation data for this product please contact:

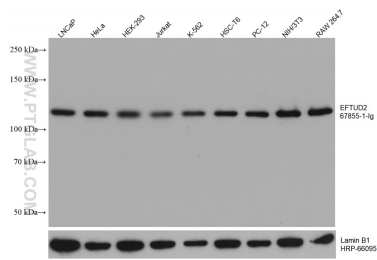
T: 4006900926

E: Proteintech-CN@ptglab.com

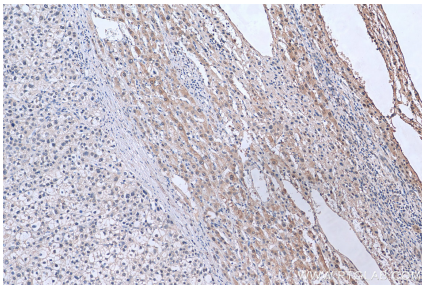
W: ptgcn.com

This product is exclusively available under Proteintech Group brand and is not available to purchase from any other manufacturer.

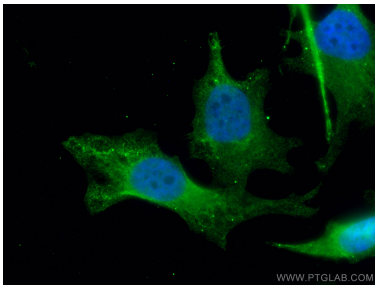
Selected Validation Data



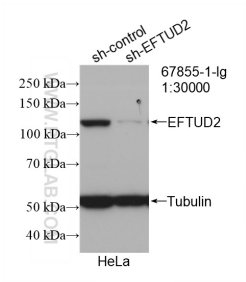
Various lysates were subjected to SDS PAGE followed by western blot with 67855-1-Ig (EFTUD2 antibody) at dilution of 1:10000 incubated at room temperature for 1.5 hours. The membrane was stripped and reblotted with HRP-conjugated Lamin B1 Monoclonal antibody (HRP-66095) as loading control.



Immunohistochemical analysis of paraffin-embedded human liver cancer tissue slide using 67855-1-Ig (EFTUD2 antibody) at dilution of 1:1000 (under 10x lens). Heat mediated antigen retrieval with Tris-EDTA buffer (pH 9.0).



Immunofluorescent analysis of (4% PFA) fixed HeLa cells using EFTUD2 antibody (67855-1-Ig, Clone: 2F4G2) at dilution of 1:800 and CoraLite®488-Conjugated AffiniPure Goat Anti-Mouse IgG(H+L).



WB result of EFTUD2 antibody (67855-1-Ig; 1:30000; incubated at room temperature for 1.5 hours) with sh-Control and sh-EFTUD2 transfected HeLa cells.