

For Research Use Only

AFP Monoclonal antibody

Catalog Number: 67852-1-Ig



Basic Information

Catalog Number: 67852-1-Ig	GenBank Accession Number: BC027881	Purification Method: Protein A purification
Size: 1000 ug/ml	GeneID (NCBI): 174	CloneNo.: 4B3E4
Source: Mouse	UNIPROT ID: P02771	Recommended Dilutions: WB 1:5000-1:50000 IHC 1:500-1:2000
Isotype: IgG1	Full Name: alpha-fetoprotein	
Immunogen Catalog Number: AG6089	Calculated MW: 69 kDa Observed MW: 68-72 kDa	

Applications

Tested Applications:
WB, IHC, ELISA

Species Specificity:
human

**Note-IHC: suggested antigen retrieval with
TE buffer pH 9.0; (*) Alternatively, antigen
retrieval may be performed with citrate
buffer pH 6.0**

Positive Controls:

WB : HepG2 cells, HuH-7 cells, human testis tissue,
human placenta tissue

IHC : human liver tissue, human liver cancer tissue

Background Information

AFP (Alpha-fetoprotein) is a major plasma protein in the fetus and its concentration is very low in the adult (PMID:24120489). AFP can be detected at abnormally high concentrations in hepatocellular carcinomas as well as in the plasma and ascitic fluid of adults with hepatoma, indicating that AFP can serve as a tumor marker (PMID: 18669658). AFP is also a glycosylated protein and based on its binding capability to lectin Lens Culinaris Agglutinin (LCA), and total AFP can be separated into three different glycoforms, AFP-L1, AFP-L2, and AFP-L3. Core-fucosylated form of AFP (AFP-L3) is a more specific indicator than total AFP for HCC (PMID: 33128033, 35458505)

Storage

Storage:
Store at -20°C. Stable for one year after shipment.
Storage Buffer:
PBS with 0.02% sodium azide and 50% glycerol pH 7.3.
Aliquoting is unnecessary for -20°C storage

For technical support and original validation data for this product please contact:

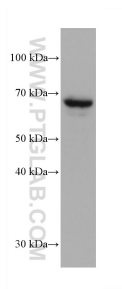
T: 4006900926

E: Proteintech-CN@ptglab.com

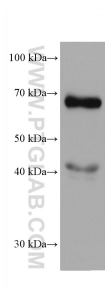
W: ptgcn.com

This product is exclusively available under Proteintech Group brand and is not available to purchase from any other manufacturer.

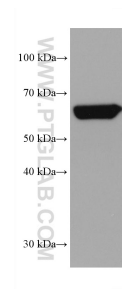
Selected Validation Data



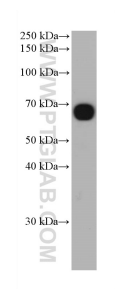
HepG2 cells were subjected to SDS PAGE followed by western blot with 67852-1-Ig (AFP antibody) at dilution of 1:10000 incubated at room temperature for 1.5 hours.



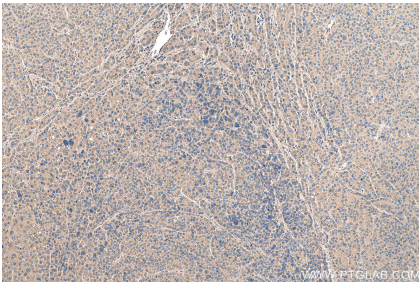
HuH-7 cells were subjected to SDS PAGE followed by western blot with 67852-1-Ig (AFP antibody) at dilution of 1:10000 incubated at room temperature for 1.5 hours.



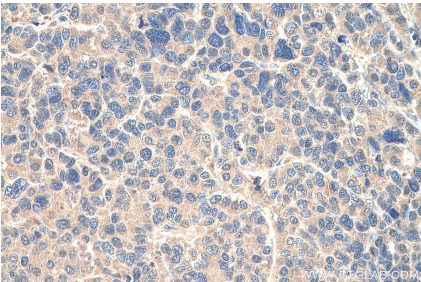
human testis tissue were subjected to SDS PAGE followed by western blot with 67852-1-Ig (AFP antibody) at dilution of 1:10000 incubated at room temperature for 1.5 hours.



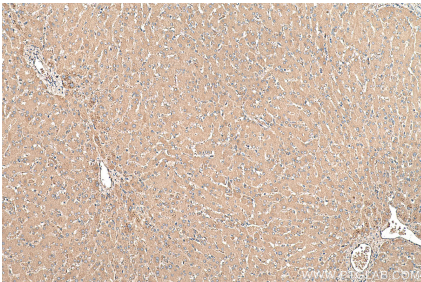
human placenta tissue were subjected to SDS PAGE followed by western blot with 67852-1-Ig (AFP antibody) at dilution of 1:10000 incubated at room temperature for 1.5 hours.



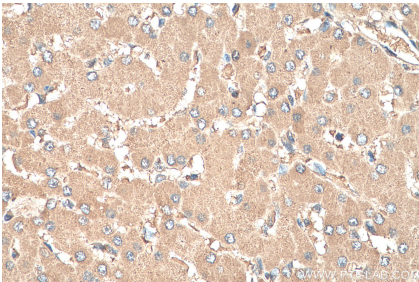
Immunohistochemical analysis of paraffin-embedded human liver cancer tissue slide using 67852-1-Ig (AFP antibody) at dilution of 1:1000 (under 10x lens). Heat mediated antigen retrieval with Tris-EDTA buffer (pH 9.0).



Immunohistochemical analysis of paraffin-embedded human liver cancer tissue slide using 67852-1-Ig (AFP antibody) at dilution of 1:1000 (under 40x lens). Heat mediated antigen retrieval with Tris-EDTA buffer (pH 9.0).



Immunohistochemical analysis of paraffin-embedded human liver tissue slide using 67852-1-Ig (AFP antibody) at dilution of 1:1000 (under 10x lens). Heat mediated antigen retrieval with Tris-EDTA buffer (pH 9.0).



Immunohistochemical analysis of paraffin-embedded human liver tissue slide using 67852-1-Ig (AFP antibody) at dilution of 1:1000 (under 40x lens). Heat mediated antigen retrieval with Tris-EDTA buffer (pH 9.0).