

# RUVBL2 Monoclonal antibody, PBS Only

Catalog Number: 67851-1-PBS

## Basic Information

Catalog Number: 67851-1-PBS	GenBank Accession Number: BC000428	Purification Method: Protein A purification
Size: 1 mg/ml	GeneID (NCBI): 10856	CloneNo.: 1A1A4
Source: Mouse	UNIPROT ID: Q9Y230	
Isotype: IgG2b	Full Name: RuvB-Like 2 (E. coli)	
Immunogen Catalog Number: AG0253	Calculated MW: 51 kDa	
	Observed MW: 51 kDa	

## Applications

**Tested Applications:**  
WB, Indirect ELISA, IHC, IF

**Species Specificity:**  
Human, mouse, rat

## Background Information

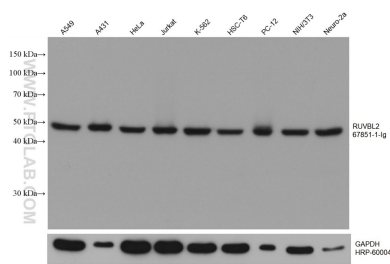
RUVBL2 belongs to the conserved ATPases associated with various cellular activities (AAA+) protein subfamily, which is characterized by the presence of conserved Walker A and B motifs that are involved in ATP binding and hydrolysis. The AAA+ (ATPases associated with diverse cellular activities) ATPases, RUVBL1 and RUVBL2, were originally isolated as components of transcriptional complexes and shown to function in a number of different cellular processes, including transcriptional regulation, chromatin remodelling and DNA damage responses. (PMID: 31572066, PMID: 31138842)

## Storage

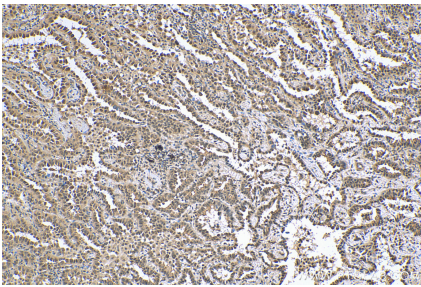
**Storage:**  
Store at -80°C.  
**The product is shipped with ice packs. Upon receipt, store it immediately at -80°C**

**Storage Buffer:**  
PBS Only

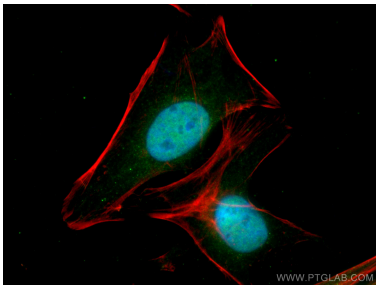
## Selected Validation Data



A549 cells were subjected to SDS PAGE followed by western blot with 67851-1-Ig (RUVBL2 antibody) at dilution of 1:10000 incubated at room temperature for 1.5 hours. The membrane was stripped and reblotted with HRP-conjugated GAPDH Monoclonal antibody (HRP-60004) as loading control. This data was developed using the same antibody clone with 67851-1-PBS in a different storage buffer formulation.



Immunohistochemical analysis of paraffin-embedded human lung cancer tissue slide using 67851-1-Ig (RUVBL2 antibody) at dilution of 1:1000 (under 10x lens). Heat mediated antigen retrieval with Tris-EDTA buffer (pH 9.0). This data was developed using the same antibody clone with 67851-1-PBS in a different storage buffer formulation.



Immunofluorescent analysis of (4% PFA) fixed HeLa cells using RUVBL2 antibody (67851-1-Ig, Clone: 1A1A4) at dilution of 1:400 and CoraLite®488-Conjugated AffiniPure Goat Anti-Mouse IgG(H+L), CL594-Phalloidin (red). This data was developed using the same antibody clone with 67851-1-PBS in a different storage buffer formulation.