

For Research Use Only

# RAB1B Monoclonal antibody, PBS Only

Catalog Number: 67837-1-PBS

Featured Product



## Basic Information

Catalog Number:

67837-1-PBS

Size:

1 mg/ml

Source:

Mouse

Isotype:

IgG1

Immunogen Catalog Number:

AG12069

GenBank Accession Number:

BC071169

GeneID (NCBI):

81876

UNIPROT ID:

Q9H0U4

Full Name:

RAB1B, member RAS oncogene family

Calculated MW:

201 aa, 22 kDa

Observed MW:

22 kDa

Purification Method:

Protein A purification

CloneNo.:

3C2G6

## Applications

Tested Applications:

WB, IHC, IF/ICC, ELISA

Species Specificity:

human, mouse, rat

## Background Information

### Storage

Storage:

Store at -80°C.

The product is shipped with ice packs. Upon receipt, store it immediately at -80°C

Storage Buffer:

PBS Only

For technical support and original validation data for this product please contact:

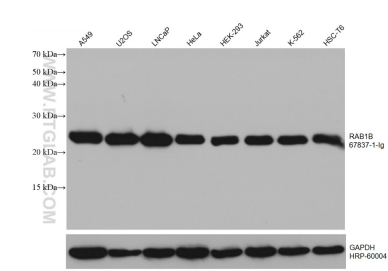
T: 4006900926

E: [Proteintech-CN@ptglab.com](mailto:Proteintech-CN@ptglab.com)

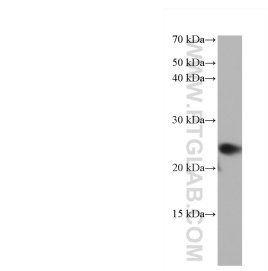
W: [ptgcn.com](http://ptgcn.com)

This product is exclusively available under Proteintech Group brand and is not available to purchase from any other manufacturer.

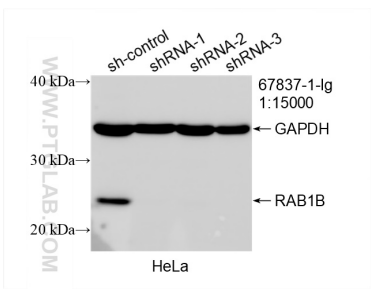
Selected Validation Data



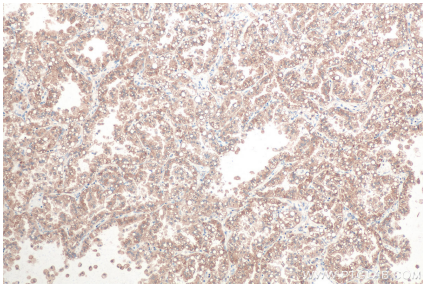
Various lysates were subjected to SDS PAGE followed by western blot with 67837-1-Ig (RAB1B antibody) at dilution of 1:10000 incubated at room temperature for 1.5 hours. This data was developed using the same antibody clone with 67837-1-PBS in a different storage buffer formulation.



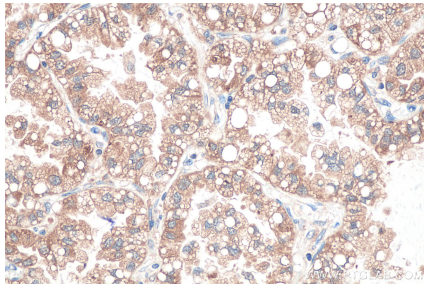
NIH/3T3 cells were subjected to SDS PAGE followed by western blot with 67837-1-Ig (RAB1B antibody) at dilution of 1:10000 incubated at room temperature for 1.5 hours. This data was developed using the same antibody clone with 67837-1-PBS in a different storage buffer formulation.



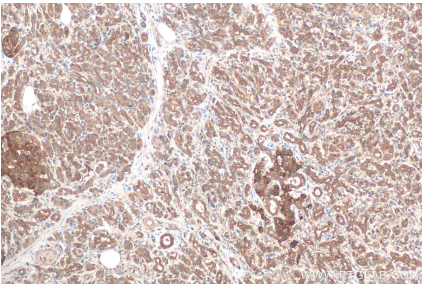
WB result of RAB1B antibody (67837-1-Ig; 1:15000; incubated at room temperature for 1.5 hours) with sh-Control and sh-RAB1B transfected HeLa cells. This data was developed using the same antibody clone with 67837-1-PBS in a different storage buffer formulation.



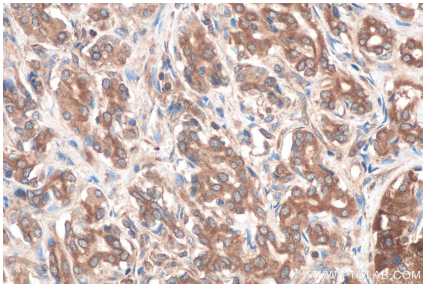
Immunohistochemical analysis of paraffin-embedded human lung cancer tissue slide using 67837-1-Ig (RAB1B antibody) at dilution of 1:500 (under 10x lens). Heat mediated antigen retrieval with Tris-EDTA buffer (pH 9.0). This data was developed using the same antibody clone with 67837-1-PBS in a different storage buffer formulation.



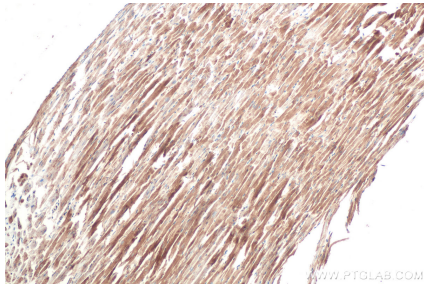
Immunohistochemical analysis of paraffin-embedded human lung cancer tissue slide using 67837-1-Ig (RAB1B antibody) at dilution of 1:500 (under 40x lens). Heat mediated antigen retrieval with Tris-EDTA buffer (pH 9.0). This data was developed using the same antibody clone with 67837-1-PBS in a different storage buffer formulation.



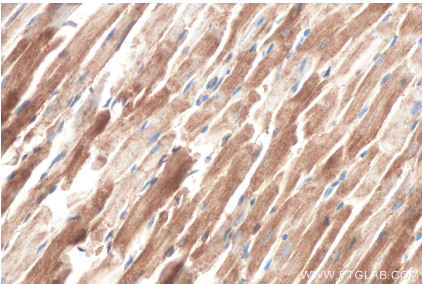
Immunohistochemical analysis of paraffin-embedded human pancreas cancer tissue slide using 67837-1-Ig (RAB1B antibody) at dilution of 1:500 (under 10x lens). Heat mediated antigen retrieval with Tris-EDTA buffer (pH 9.0). This data was developed using the same antibody clone with 67837-1-PBS in a different storage buffer formulation.



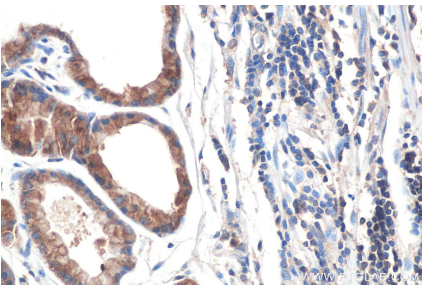
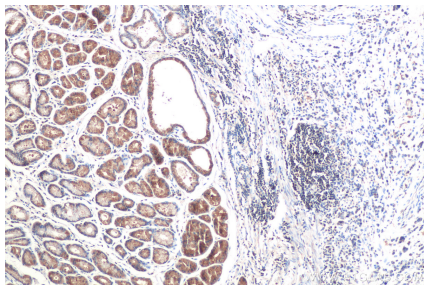
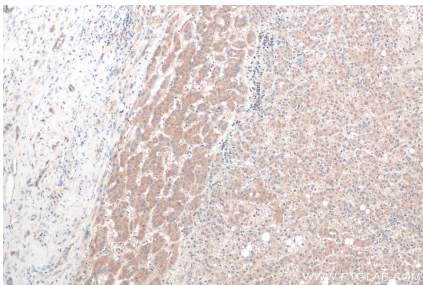
Immunohistochemical analysis of paraffin-embedded human pancreas cancer tissue slide using 67837-1-Ig (RAB1B antibody) at dilution of 1:500 (under 40x lens). Heat mediated antigen retrieval with Tris-EDTA buffer (pH 9.0). This data was developed using the same antibody clone with 67837-1-PBS in a different storage buffer formulation.



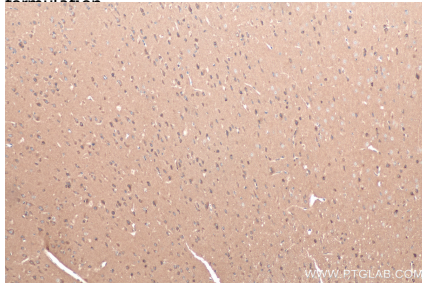
Immunohistochemical analysis of paraffin-embedded rat heart tissue slide using 67837-1-Ig (RAB1B antibody) at dilution of 1:500 (under 10x lens). Heat mediated antigen retrieval with Tris-EDTA buffer (pH 9.0). This data was developed using the same antibody clone with 67837-1-PBS in a different storage buffer formulation.



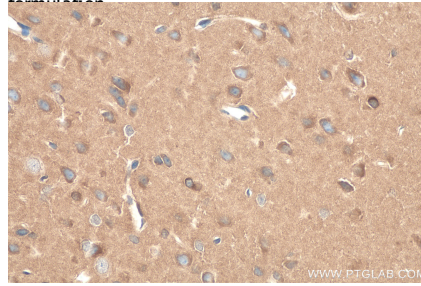
Immunohistochemical analysis of paraffin-embedded rat heart tissue slide using 67837-1-Ig (RAB1B antibody) at dilution of 1:500 (under 40x lens). Heat mediated antigen retrieval with Tris-EDTA buffer (pH 9.0). This data was developed using the same antibody clone with 67837-1-PBS in a different storage buffer formulation.



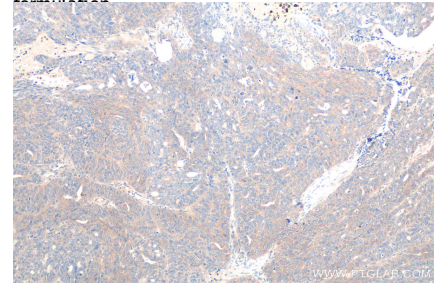
Immunohistochemical analysis of paraffin-embedded human liver cancer tissue slide using 67837-1-Ig (RAB1B antibody) at dilution of 1:500 (under 10x lens). Heat mediated antigen retrieval with Tris-EDTA buffer (pH 9.0). This data was developed using the same antibody clone with 67837-1-PBS in a different storage buffer formulation.



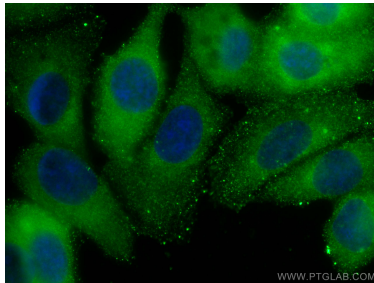
Immunohistochemical analysis of paraffin-embedded human stomach cancer tissue slide using 67837-1-Ig (RAB1B antibody) at dilution of 1:500 (under 10x lens). Heat mediated antigen retrieval with Tris-EDTA buffer (pH 9.0). This data was developed using the same antibody clone with 67837-1-PBS in a different storage buffer formulation.



Immunohistochemical analysis of paraffin-embedded human stomach cancer tissue slide using 67837-1-Ig (RAB1B antibody) at dilution of 1:500 (under 40x lens). Heat mediated antigen retrieval with Tris-EDTA buffer (pH 9.0). This data was developed using the same antibody clone with 67837-1-PBS in a different storage buffer formulation.

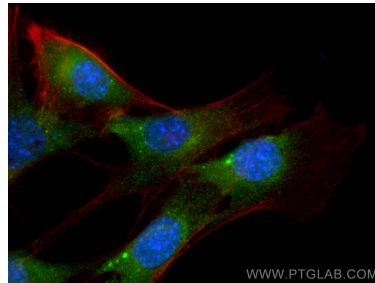


Immunohistochemical analysis of paraffin-embedded rat brain tissue slide using 67837-1-Ig (RAB1B antibody) at dilution of 1:500 (under 10x lens). Heat mediated antigen retrieval with Tris-EDTA buffer (pH 9.0). This data was developed using the same antibody clone with 67837-1-PBS in a different storage buffer formulation.



Immunofluorescent analysis of (-20°C Methanol) fixed MCF-7 cells using RAB1B antibody (67837-1-Ig, Clone: 3C2G6) at dilution of 1:400 and CoraLite®488-Conjugated AffiniPure Goat Anti-Mouse IgG(H+L). This data was developed using the same antibody clone with 67837-1-PBS in a different storage buffer formulation.

Immunohistochemical analysis of paraffin-embedded rat brain tissue slide using 67837-1-Ig (RAB1B antibody) at dilution of 1:500 (under 40x lens). Heat mediated antigen retrieval with Tris-EDTA buffer (pH 9.0). This data was developed using the same antibody clone with 67837-1-PBS in a different storage buffer formulation.



Immunofluorescent analysis of (4% PFA) fixed NIH/3T3 cells using RAB1B antibody (67837-1-Ig, Clone: 3C2G6) at dilution of 1:800 and CoraLite®488-Conjugated AffiniPure Goat Anti-Mouse IgG(H+L), CL594-Phalloidin (red). This data was developed using the same antibody clone with 67837-1-PBS in a different storage buffer formulation.

Immunohistochemical analysis of paraffin-embedded human ovary tumor tissue slide using 67837-1-Ig (RAB1B antibody) at dilution of 1:500 (under 10x lens). Heat mediated antigen retrieval with Tris-EDTA buffer (pH 9.0). This data was developed using the same antibody clone with 67837-1-PBS in a different storage buffer formulation.