

For Research Use Only

LMCD1 Monoclonal antibody

Catalog Number: 67834-1-Ig **1 Publications**



Basic Information

Catalog Number: 67834-1-Ig	GenBank Accession Number: BC000646	Purification Method: Protein G purification
Size: 1000 µg/ml	GeneID (NCBI): 29995	CloneNo.: 2A7B3
Source: Mouse	UNIPROT ID: Q9NZU5	Recommended Dilutions: WB 1:5000-1:50000 IHC 1:250-1:1000 IF/ICC 1:200-1:800
Isotype: IgG1	Full Name: LIM and cysteine-rich domains 1	
Immunogen Catalog Number: AG28331	Calculated MW: 41 kDa Observed MW: ~40 kDa	

Applications

Tested Applications: WB, IHC, IF/ICC, ELISA	Positive Controls: WB : U2OS cells, human placenta tissue
Cited Applications: WB	IHC : human colon tissue, mouse skeletal muscle tissue, rat skeletal muscle tissue, human colon cancer tissue
Species Specificity: Human, mouse, rat	IF/ICC : MCF-7 cells,
Cited Species: human, mouse	
Note-IHC: suggested antigen retrieval with TE buffer pH 9.0; (*) Alternatively, antigen retrieval may be performed with citrate buffer pH 6.0	

Background Information

LIM and cysteine-rich domains-1 (LMCD1) is a member of the LIM protein family, which contains an N-terminal cysteine-rich region, two C-terminal LIM domains and a central PET (Prickle, Espinas, and Testin) domain. LMCD1 has been reported in cardiac tissues and lung acting as a transcriptional repressor for GATA6. The mutations of LMCD1 promote cell migration and tumor metastasis in hepatocellular carcinoma. (PMID: 31501411) It has calculated molecular weight around 41kDa.

Notable Publications

Author	Pubmed ID	Journal	Application
Yunlan Tang	39426558	Exp Eye Res	WB

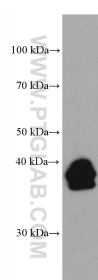
Storage

Storage:
Store at -20°C. Stable for one year after shipment.
Storage Buffer:
PBS with 0.02% sodium azide and 50% glycerol pH 7.3.
Aliquoting is unnecessary for -20°C storage

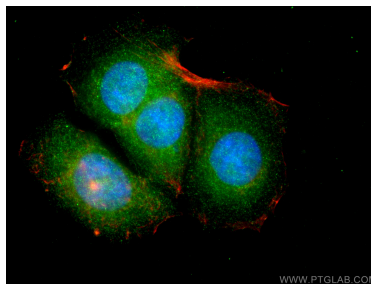
For technical support and original validation data for this product please contact:
T: 4006900926 E: Proteintech-CN@ptglab.com W: ptgcn.com

This product is exclusively available under Proteintech Group brand and is not available to purchase from any other manufacturer.

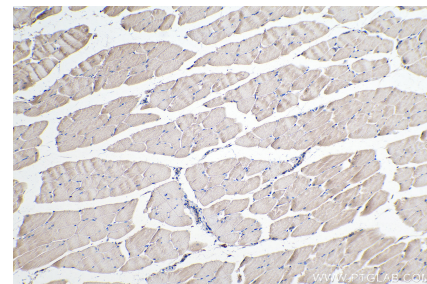
Selected Validation Data



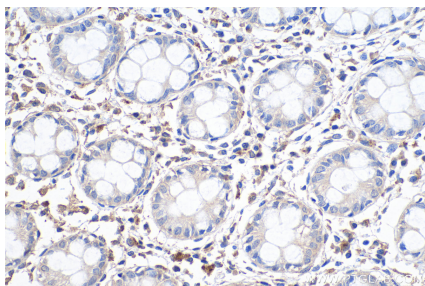
U2OS cells were subjected to SDS PAGE followed by western blot with 67834-1-Ig (LMCD1 antibody) at dilution of 1:20000 incubated at room temperature for 1.5 hours.



Immunofluorescent analysis of (4% PFA) fixed MCF-7 cells using LMCD1 antibody (67834-1-Ig, Clone: 2A7B3) at dilution of 1:400 and CoraLite®488-Conjugated Goat Anti-Mouse IgG(H+L), CL594-Phalloidin (red).



Immunohistochemical analysis of paraffin-embedded mouse skeletal muscle tissue slide using 67834-1-Ig (LMCD1 antibody) at dilution of 1:500 (under 10x lens). Heat mediated antigen retrieval with Tris-EDTA buffer (pH 9.0).



Immunohistochemical analysis of paraffin-embedded human colon tissue slide using 67834-1-Ig (LMCD1 antibody) at dilution of 1:500 (under 40x lens). Heat mediated antigen retrieval with Tris-EDTA buffer (pH 9.0).