

For Research Use Only

TALDO1 Monoclonal antibody, PBS Only



Catalog Number: 67816-1-PBS

Featured Product

Basic Information

Catalog Number:

67816-1-PBS

Size:

1 mg/ml

Source:

Mouse

Isotype:

IgG1

Immunogen Catalog Number:

AG3031

GenBank Accession Number:

BC009680

GeneID (NCBI):

6888

UNIPROT ID:

P37837

Full Name:

transaldolase 1

Calculated MW:

337 aa, 38 kDa

Observed MW:

38 kDa

Purification Method:

Protein G purification

CloneNo.:

2F5G3

Applications

Tested Applications:

WB, Indirect ELISA, IHC

Species Specificity:

Human

Background Information

TALDO1 belongs to the transaldolase family which contributes to the generation of NADPH in the nonoxidative phase of the pentose phosphate pathway (PPP). Defects in TALDO1 are the cause of transaldolase 1 deficiency which results in telangiectases of the skin, hepatosplenomegaly, and enlarged clitoris.

Storage

Storage:

Store at -80°C.

The product is shipped with ice packs. Upon receipt, store it immediately at -80°C

Storage Buffer:

PBS Only

For technical support and original validation data for this product please contact:

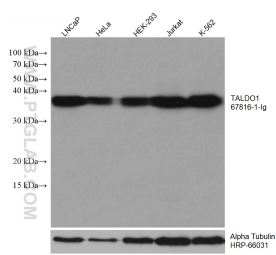
T: 4006900926

E: Proteintech-CN@ptglab.com

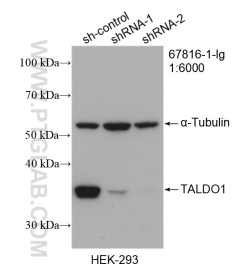
W: ptgcn.com

This product is exclusively available under Proteintech Group brand and is not available to purchase from any other manufacturer.

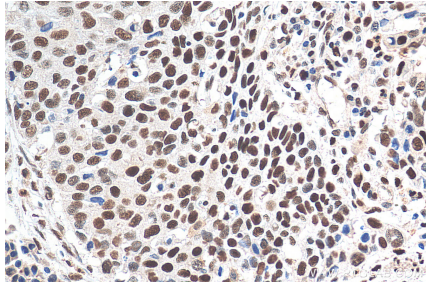
Selected Validation Data



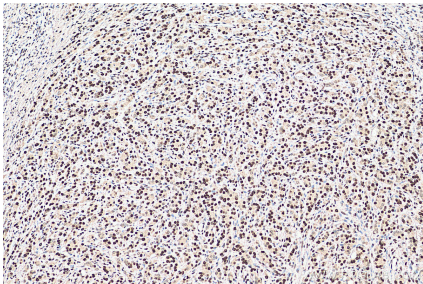
Various lysates were subjected to SDS PAGE followed by western blot with 67816-1-Ig (TALDO1 antibody) at dilution of 1:10000 incubated at room temperature for 1.5 hours. The membrane was stripped and reblotted with HRP-conjugated Alpha Tubulin Monoclonal antibody (HRP-66031) as loading control. This data was developed using the same antibody clone with 67816-1-PBS in a different storage buffer formulation.



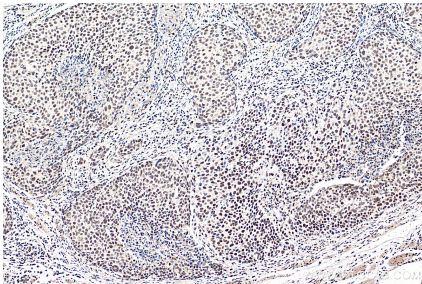
WB result of TALDO1 antibody (67816-1-Ig; 1:6000; incubated at room temperature for 1.5 hours) with sh-Control and sh-TALDO1 transfected HEK-293 cells. This data was developed using the same antibody clone with 67816-1-PBS in a different storage buffer formulation.



Immunohistochemical analysis of paraffin-embedded human oesophagus cancer tissue slide using 67816-1-Ig (TALDO1 antibody) at dilution of 1:1000 (under 40x lens). Heat mediated antigen retrieval with Tris-EDTA buffer (pH 9.0). This data was developed using the same antibody clone with 67816-1-PBS in a different storage buffer formulation.



Immunohistochemical analysis of paraffin-embedded human prostate cancer tissue slide using 67816-1-Ig (TALDO1 antibody) at dilution of 1:1000 (under 10x lens). Heat mediated antigen retrieval with Tris-EDTA buffer (pH 9.0). This data was developed using the same antibody clone with 67816-1-PBS in a different storage buffer formulation.



Immunohistochemical analysis of paraffin-embedded human oesophagus cancer tissue slide using 67816-1-Ig (TALDO1 antibody) at dilution of 1:1000 (under 10x lens). Heat mediated antigen retrieval with Tris-EDTA buffer (pH 9.0). This data was developed using the same antibody clone with 67816-1-PBS in a different storage buffer formulation.