

## MFG-E8 Monoclonal antibody

Catalog Number: 67797-1-Ig

## Basic Information

<b>Catalog Number:</b> 67797-1-Ig	<b>GenBank Accession Number:</b> BC003610	<b>Purification Method:</b> Protein A purification
<b>Size:</b> 1000 µg/ml	<b>GeneID (NCBI):</b> 4240	<b>CloneNo.:</b> 1A1A9
<b>Source:</b> Mouse	<b>UNIPROT ID:</b> Q08431	<b>Recommended Dilutions:</b> WB 1:5000-1:50000 IHC 1:4000-1:16000
<b>Isotype:</b> IgG2b	<b>Full Name:</b> milk fat globule-EGF factor 8 protein	
<b>Immunogen Catalog Number:</b> AG30666	<b>Calculated MW:</b> 43 kDa	
	<b>Observed MW:</b> 43 kDa	

## Applications

<b>Tested Applications:</b> WB, IHC, ELISA	<b>Positive Controls:</b>
<b>Species Specificity:</b> Human	<b>WB :</b> human milk, human placenta tissue
	<b>IHC :</b> human placenta tissue,

**Note-IHC: suggested antigen retrieval with TE buffer pH 9.0; (\*) Alternatively, antigen retrieval may be performed with citrate buffer pH 6.0**

## Background Information

Milk fat globule-epidermal growth factor-factor 8 (MFG-E8), also known as lactadherin, is a multifunctional secreted glycoprotein exhibiting versatile functions in cell physiology affecting health and diseases. It plays roles in clearance of apoptotic cells, anti-inflammatory, wound healing, arterial remodeling, angiogenesis, enhancing tumorigenicity and cancer metastasis (PMID: 23972256). MFG-E8 consists of two-repeated EGF-like domains, a mucin-like domain and two-repeated discoidin-like domains (C-domains), and contains an integrin-binding motif (RGD sequence) in the EGF-like domain (PMID: 11856354). It shows ubiquitous pattern of expression in various types of cells and tissues. Altered expression of MFG-E8 causes disruptions of homeostasis and is correlated with a number of diseases (PMID: 27429513).

## Storage

**Storage:**  
Store at -20°C.  
**Storage Buffer:**  
 PBS with 0.02% sodium azide and 50% glycerol pH 7.3.  
 Aliquoting is unnecessary for -20°C storage

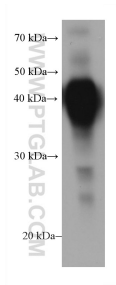
For technical support and original validation data for this product please contact:

T: 4006900926

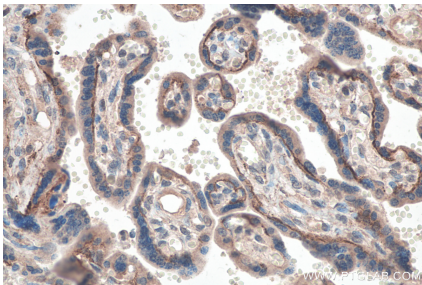
E: [Proteintech-CN@ptglab.com](mailto:Proteintech-CN@ptglab.com)W: [ptgcn.com](http://ptgcn.com)

This product is exclusively available under Proteintech Group brand and is not available to purchase from any other manufacturer.

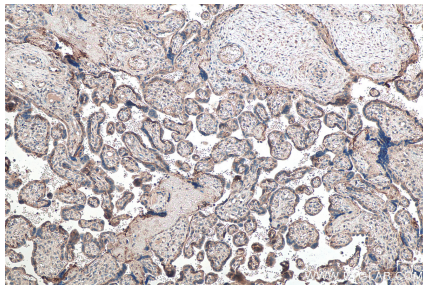
## Selected Validation Data



human milk were subjected to SDS PAGE followed by western blot with 67797-1-Ig (MFG-E8 antibody) at dilution of 1:20000 incubated at room temperature for 1.5 hours.



Immunohistochemical analysis of paraffin-embedded human placenta tissue slide using 67797-1-Ig (MFG-E8 antibody) at dilution of 1:8000 (under 40x lens). Heat mediated antigen retrieval with Tris-EDTA buffer (pH 9.0).



Immunohistochemical analysis of paraffin-embedded human placenta tissue slide using 67797-1-Ig (MFG-E8 antibody) at dilution of 1:8000 (under 10x lens). Heat mediated antigen retrieval with Tris-EDTA buffer (pH 9.0).