

## SERBP1 Monoclonal antibody

Catalog Number: 67792-1-Ig

## Basic Information

<b>Catalog Number:</b> 67792-1-Ig	<b>GenBank Accession Number:</b> BC008045	<b>Purification Method:</b> Protein G purification
<b>Size:</b> 500 µg/ml	<b>GeneID (NCBI):</b> 26135	<b>CloneNo.:</b> 1D4H1
<b>Source:</b> Mouse	<b>UNIPROT ID:</b> Q8NC51	<b>Recommended Dilutions:</b> WB 1:5000-1:50000 IP 0.5-4.0 µg for 1.0-3.0 mg of total protein lysate IHC 1:500-1:2000 IF-P 1:200-1:800
<b>Isotype:</b> IgG1	<b>Full Name:</b> SERPINE1 mRNA binding protein 1	
<b>Immunogen Catalog Number:</b> AG30202	<b>Calculated MW:</b> 45 kDa <b>Observed MW:</b> 50 kDa	

## Applications

**Tested Applications:**  
IF-P, IHC, IP, WB, ELISA

**Species Specificity:**  
Human, Mouse, Rat, pig, Canine

**Note-IHC:** suggested antigen retrieval with **TE buffer pH 9.0; (\*) Alternatively, antigen retrieval may be performed with citrate buffer pH 6.0**

**Positive Controls:**

**WB:** LNCaP cells, MDCK cells, HSC-T6 cells, HeLa cells, HEK-293 cells, Jurkat cells, K-562 cells

**IP:** HeLa cells,

**IHC:** human liver cancer tissue,

**IF-P:** human liver cancer tissue,

## Background Information

The plasminogen activator system (PA) plays an important role in invasion and metastasis of solid tumors. The PA Inhibitor type 1 (PAI-1) is the main physiologic regulator of plasminogen activation. PAI-RBP1 (PAI-1 mRNA Binding Protein 1, also named SERBP1), is an RNA-binding protein containing an RG-rich domain and an RGG box domain that might be methylated by protein arginine N-methyltransferases (PRMTs). SERBP1 was identified as an interacting partner of a Tudor domain containing protein TDRD3, and can localize to cytoplasmic stress granules (SGs).

## Storage

**Storage:**

Store at -20°C. Stable for one year after shipment.

**Storage Buffer:**

PBS with 0.02% sodium azide and 50% glycerol pH 7.3.

**Aliquoting is unnecessary for -20°C storage**

For technical support and original validation data for this product please contact:

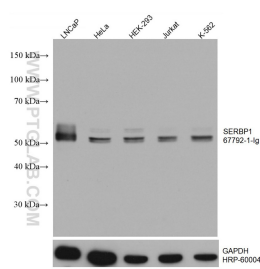
T: 4006900926

E: [Proteintech-CN@ptglab.com](mailto:Proteintech-CN@ptglab.com)

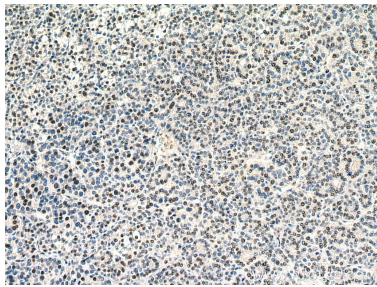
W: [ptgcn.com](http://ptgcn.com)

**This product is exclusively available under Proteintech Group brand and is not available to purchase from any other manufacturer.**

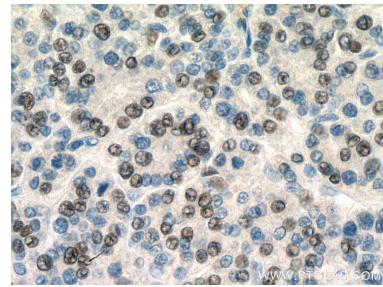
Selected Validation Data



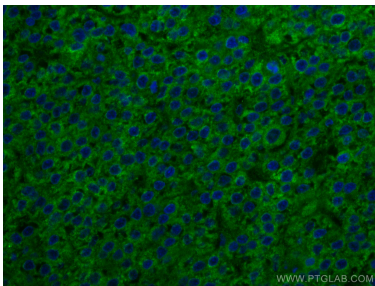
Various lysates were subjected to SDS PAGE followed by western blot with 67792-1-Ig (SERBP1 antibody) at dilution of 1:20000 incubated at room temperature for 1.5 hours. The membrane was stripped and reblotted with HRP-conjugated GAPDH Monoclonal antibody (HRP-60004) as loading control.



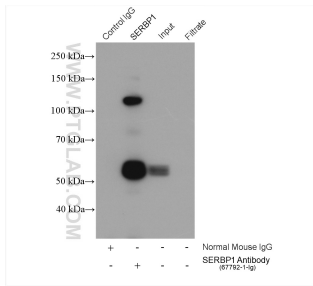
Immunohistochemical analysis of paraffin-embedded human liver cancer tissue slide using 67792-1-Ig (SERBP1 antibody) at dilution of 1:2000 (under 10x lens). Heat mediated antigen retrieval with Tris-EDTA buffer (pH 9.0).



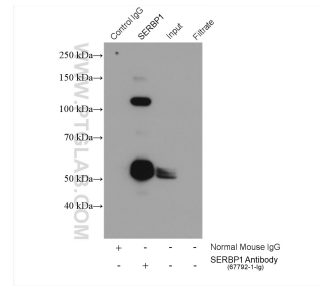
Immunohistochemical analysis of paraffin-embedded human liver cancer tissue slide using 67792-1-Ig (SERBP1 antibody) at dilution of 1:2000 (under 40x lens). Heat mediated antigen retrieval with Tris-EDTA buffer (pH 9.0).



Immunofluorescent analysis of (4% PFA) fixed human liver cancer tissue using SERBP1 antibody (67792-1-Ig, Clone: 1D4H1) at dilution of 1:400 and CoraLite®488-Conjugated AffiniPure Goat Anti-Mouse IgG(H+L). DAPI (blue).



IP result of anti-SERBP1 (IP:67792-1-Ig, 5ug; Detection:67792-1-Ig 1:2000) with HeLa cells lysate 1880 ug.



IP result of anti-SERBP1 (IP:67792-1-Ig, 5ug; Detection:67792-1-Ig 1:2000) with HeLa cells lysate 1880 ug.