

For Research Use Only

TK1 Monoclonal antibody

Catalog Number: 67787-1-Ig **1 Publications**



Basic Information

| | | |
|-------------------------------------|--|---|
| Catalog Number: 67787-1-Ig | GenBank Accession Number: BC007986 | Purification Method: Protein A purification |
| Size: 1000 ug/ml | GeneID (NCBI): 7083 | CloneNo.: 1B1C2 |
| Source: Mouse | UNIPROT ID: P04183 | Recommended Dilutions: WB 1:2000-1:10000 IHC 1:250-1:1000 IF/ICC 1:200-1:800 |
| Isotype: IgG2a | Full Name: thymidine kinase 1, soluble | |
| Immunogen Catalog Number: AG8265 | Calculated MW: 25 kDa Observed MW: 25 kDa | |

Applications

| | |
|--|---|
| Tested Applications: WB, IHC, IF/ICC, ELISA | Positive Controls: WB : HeLa cells, Jurkat cells, THP-1 cells, Raji cells, HEK-293 cells, HepG2 cells, K-562 cells IHC : human colon cancer tissue, IF/ICC : HCT 116 cells, |
| Cited Applications: WB, IHC, IF | |
| Species Specificity: human | |
| Cited Species: human | |
| Note-IHC: suggested antigen retrieval with TE buffer pH 9.0; (*) Alternatively, antigen retrieval may be performed with citrate buffer pH 6.0 | |

Background Information

TK1(Thymidine kinase, cytosolic) belongs to the thymidine kinase family and is a regulatory enzyme that can interchange between its dimeric and tetrameric forms, which have low and high catalytic efficiencies, respectively. TK1 is involved in DNA synthesis and an important proliferation marker(PMID:21178264).

Notable Publications

| Author | Pubmed ID | Journal | Application |
|-----------|-----------|----------------|-------------|
| Ning Wang | 36806253 | Cell Death Dis | WB,IHC,IF |

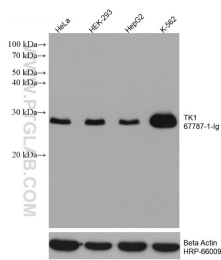
Storage

Storage:
Store at -20°C. Stable for one year after shipment.
Storage Buffer:
PBS with 0.02% sodium azide and 50% glycerol pH 7.3.
Aliquoting is unnecessary for -20°C storage

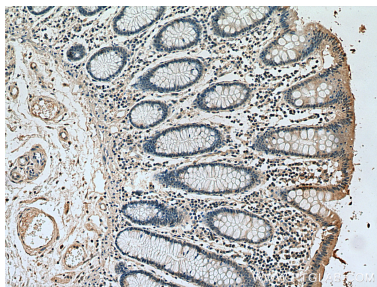
For technical support and original validation data for this product please contact:
T: 4006900926 E: Proteintech-CN@ptglab.com W: ptgcn.com

This product is exclusively available under Proteintech Group brand and is not available to purchase from any other manufacturer.

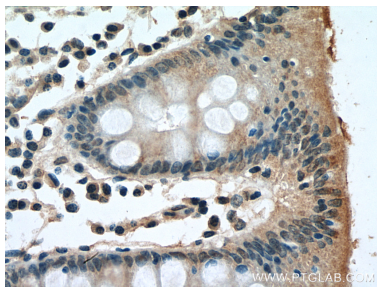
Selected Validation Data



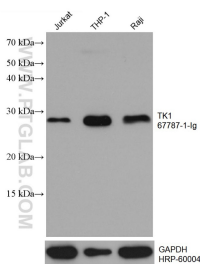
Various lysates were subjected to SDS PAGE followed by western blot with 67787-1-Ig (TK1 antibody) at dilution of 1:5000 incubated at room temperature for 1.5 hours. The membrane was stripped and reblotted with HRP-conjugated Beta Actin Monoclonal antibody (HRP-66009) as loading control.



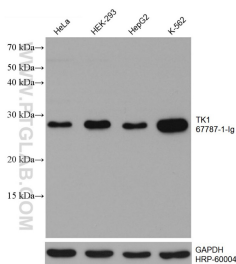
Immunohistochemical analysis of paraffin-embedded human colon cancer tissue slide using 67787-1-Ig (TK1 antibody) at dilution of 1:500 (under 10x lens). Heat mediated antigen retrieval with Tris-EDTA buffer (pH 9.0).



Immunohistochemical analysis of paraffin-embedded human colon cancer tissue slide using 67787-1-Ig (TK1 antibody) at dilution of 1:500 (under 40x lens). Heat mediated antigen retrieval with Tris-EDTA buffer (pH 9.0).

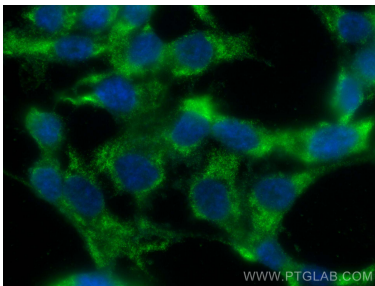


Various lysates were subjected to SDS PAGE followed by western blot with 67787-1-Ig (TK1 antibody) at dilution of 1:5000 incubated at room temperature for 1.5 hours. The membrane was stripped and reblotted with HRP-conjugated GAPDH Monoclonal antibody (HRP-60004) as loading control.



Various lysates were subjected to SDS PAGE followed by western blot with 67787-1-Ig (TK1 antibody) at dilution of 1:5000 incubated at room temperature for 1.5 hours. The membrane was stripped and reblotted with HRP-conjugated GAPDH Monoclonal antibody (HRP-60004) as loading control.

Immunohistochemical analysis of paraffin-embedded human tonsillitis tissue slide using 67787-1-Ig (TK1 antibody) at dilution of 1:4000 (under 20x lens). Heat mediated antigen retrieval with Tris-EDTA buffer (pH 9.0).



Immunofluorescent analysis of (-20°C Ethanol) fixed HCT 116 cells using TK1 antibody (67787-1-Ig, Clone: 1B1C2) at dilution of 1:400 and CoraLite®488-Conjugated AffiniPure Goat Anti-Mouse IgG(H+L) (SA00013-1).