

For Research Use Only

citrate synthase Monoclonal antibody

Catalog Number: 67784-1-Ig **2 Publications**



Basic Information

Catalog Number: 67784-1-Ig	GenBank Accession Number: BC010106	Purification Method: Protein G purification
Concentration: 1000 ug/ml	GeneID (NCBI): 1431	CloneNo.: 2F9G6
Source: Mouse	UNIPROT ID: O75390	Recommended Dilutions: WB 1:2000-1:10000 IHC 1:500-1:2000 IF-Fro 1:200-1:800 IF/ICC 1:400-1:1600
Isotype: IgG1	Full Name: citrate synthase	
Immunogen Catalog Number: AG9255	Calculated MW: 466 aa, 52 kDa	

Applications

Tested Applications: WB, IHC, IF/ICC, IF-Fro, ELISA	Positive Controls: WB : LNCaP cells, HeLa cells, HepG2 cells, HEK-293 cells, Jurkat cells, K-562 cells, HSC-T6 cells, PC-12 cells, NIH/3T3 cells
Cited Applications: WB	IHC : human breast cancer tissue, IF-Fro : mouse breast cancer, IF/ICC : MCF-7 cells, HepG2 cells
Species Specificity: human, mouse, rat	
Cited Species: human, mouse	

Note-IHC: suggested antigen retrieval with TE buffer pH 9.0; (*) Alternatively, antigen retrieval may be performed with citrate buffer pH 6.0

Background Information

Citrate synthase (CS), the first and rate-limiting enzyme of the tricarboxylic acid cycle, plays a key role in regulating energy generation of mitochondrial respiration (PMID:19479947). It belongs to the citrate synthase family. The deduced 466-amino acid protein contains an N-terminal mitochondrial targeting sequence and a motif highly conserved in citrate synthases (PMID:12549038). It can exist as a dimer (PMID:8749851). Northern blot analysis detected no CS expression in thymus and small intestine (PMID:12549038). This antibody is specific to CS.

Notable Publications

Author	Pubmed ID	Journal	Application
Wanhong Han	39411885	Aging Cell	WB
Sikai Wang	38969639	Cell Death Dis	WB

Storage

Storage:
Store at -20°C. Stable for one year after shipment.
Storage Buffer:
PBS with 0.02% sodium azide and 50% glycerol, pH7.3
Aliquoting is unnecessary for -20°C storage

For technical support and original validation data for this product please contact:

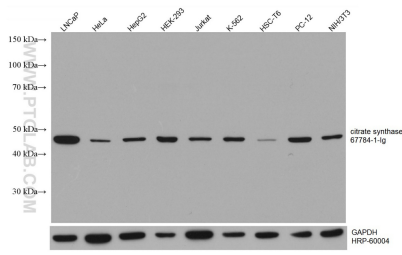
T: 4006900926

E: Proteintech-CN@ptglab.com

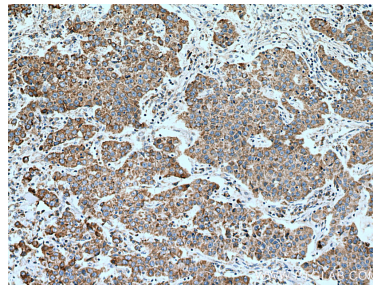
W: ptgcn.com

This product is exclusively available under Proteintech Group brand and is not available to purchase from any other manufacturer.

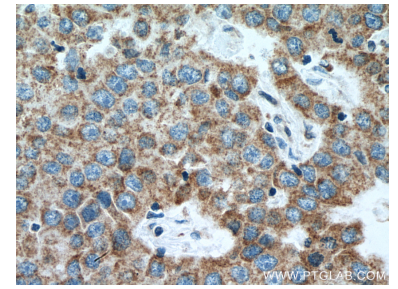
Selected Validation Data



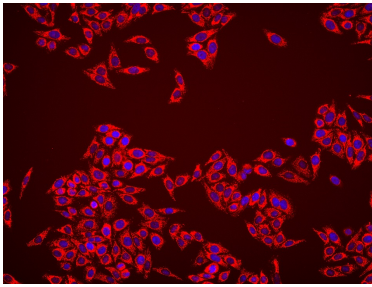
LNCaP cells were subjected to SDS PAGE followed by western blot with 67784-1-Ig (citrate synthase antibody) at dilution of 1:5000 incubated at room temperature for 1.5 hours. The membrane was stripped and reblotted with HRP-conjugated GAPDH Monoclonal antibody (HRP-60004) as loading control.



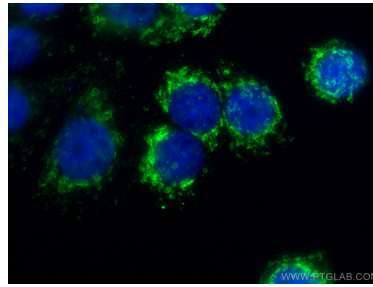
Immunohistochemical analysis of paraffin-embedded human breast cancer tissue slide using 67784-1-Ig (citrate synthase antibody) at dilution of 1:1000 (under 10x lens). Heat mediated antigen retrieval with Tris-EDTA buffer (pH 9.0).



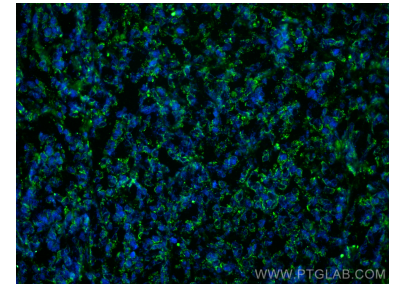
Immunohistochemical analysis of paraffin-embedded human breast cancer tissue slide using 67784-1-Ig (citrate synthase antibody) at dilution of 1:1000 (under 40x lens). Heat mediated antigen retrieval with Tris-EDTA buffer (pH 9.0).



Immunofluorescent analysis of (4% PFA) fixed HepG2 cells using citrate synthase antibody (67784-1-Ig, Clone: 2F9G6) at dilution of 1:1000 and Multi-rAb CoraLite® Plus 594-Goat Anti-Mouse Recombinant Secondary Antibody (H+L) (Cat.NO. RGAM004).



Immunofluorescent analysis of (4% PFA) fixed MCF-7 cells using citrate synthase antibody (67784-1-Ig, Clone: 2F9G6) at dilution of 1:800 and CoraLite® 488-Conjugated AffiniPure Goat Anti-Mouse IgG(H+L). DAPI (blue).



Immunofluorescent analysis of (4% PFA) fixed frozen OCT-embedded mouse breast cancer using citrate synthase antibody (67784-1-Ig, Clone: 2F9G6) at dilution of 1:400 and CoraLite® 488-Conjugated Goat Anti-Mouse IgG(H+L) (SA00013-1).