

For Research Use Only

# GUCY2C Monoclonal antibody

Catalog Number: 67782-1-Ig



## Basic Information

Catalog Number:

67782-1-Ig

Size:

1000 µg/ml

Source:

Mouse

Isotype:

IgG1

Immunogen Catalog Number:

AG19256

GenBank Accession Number:

BC136544

GeneID (NCBI):

2984

UNIPROT ID:

P25092

Full Name:

guanylate cyclase 2C (heat stable enterotoxin receptor)

Calculated MW:

1073 aa, 123 kDa

Observed MW:

130 kDa

Purification Method:

Protein G purification

CloneNo.:

1F5F6

Recommended Dilutions:

WB 1:1000-1:4000

## Applications

Tested Applications:

WB, ELISA

Species Specificity:

Human

Positive Controls:

WB: Caco-2 cells, HaCaT cells, HeLa cells

## Background Information

GUCY2C is also named as GUC2C, STAR (Heat-stable enterotoxin receptor), Guanylyl cyclase C and belongs to the adenylyl cyclase class-4/guanylyl cyclase family. It is a receptor for the E.coli heat-stable enterotoxin and considered to be the true apical membrane receptor for the endogenous ligands uroguanylin and guanylin. GUCY2C is not present in the endocrine pancreas, but is localized exclusively to the ductal system which fully corresponds to the GUCY2C activity detected in the exocrine ductal system, but particularly not in islets of Langerhans. GUCY2C with a molecular mass of 130 kDa is detected in pancreatic and intestinal extracts. (PMID:11431160). The full length protein is 123 kDa and has a signal peptide and nine glycosylation sites.

## Storage

Storage:

Store at -20°C.

Storage Buffer:

PBS with 0.02% sodium azide and 50% glycerol pH 7.3.

Aliquoting is unnecessary for -20°C storage

For technical support and original validation data for this product please contact:

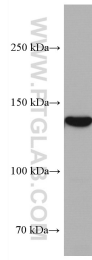
T: 4006900926

E: Proteintech-CN@ptglab.com

W: ptgcn.com

This product is exclusively available under Proteintech Group brand and is not available to purchase from any other manufacturer.

## Selected Validation Data



Caco-2 cells were subjected to SDS PAGE followed by western blot with 67782-1-Ig (GUCY2C antibody) at dilution of 1:2000 incubated at room temperature for 1.5 hours.