

For Research Use Only

# GOLPH3 Monoclonal antibody, PBS Only

Catalog Number: 67777-1-PBS

Featured Product



## Basic Information

Catalog Number:

67777-1-PBS

Size:

1 mg/ml

Source:

Mouse

Isotype:

IgG2a

Immunogen Catalog Number:

AG5443

GenBank Accession Number:

BC033725

GeneID (NCBI):

64083

UNIPROT ID:

Q9H4A6

Full Name:

golgi phosphoprotein 3 (coat-protein)

Calculated MW:

298 aa, 34 kDa

Observed MW:

34 kDa

Purification Method:

Protein A purification

CloneNo.:

3H2A5

## Applications

Tested Applications:

WB, IHC, IF/ICC, ELISA

Species Specificity:

human, mouse, rat

## Background Information

GOLPH3 (also called GPP34, GMx33, MIDAS, or yeast Vps74p) is a 34-kDa Golgi-associated protein conserved from yeast to human. GOLPH3 binds to PtdIns(4)P-rich trans-Golgi membranes and MYO18A conveying a tensile force required for efficient tubule and vesicle formation (PMID: 19837035). GOLPH3 has been recently demonstrated as a novel oncoprotein amplified in various types of human malignancies, including melanoma, breast, non-small cell lung cancer, gliomas and connective tissue tumors (PMID:19553991; 23006319; 21499727; 22745132). Enhanced activation of mTOR signaling represents a molecular basis for the oncogenic activity of GOLPH3 (PMID: 19553991).

## Storage

Storage:

Store at -80°C.

The product is shipped with ice packs. Upon receipt, store it immediately at -80°C

Storage Buffer:

PBS Only

For technical support and original validation data for this product please contact:

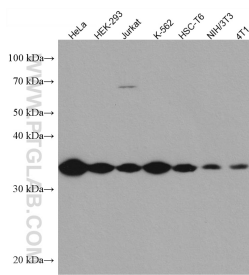
T: 4006900926

E: [Proteintech-CN@ptglab.com](mailto:Proteintech-CN@ptglab.com)

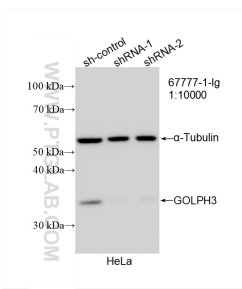
W: [ptgcn.com](http://ptgcn.com)

This product is exclusively available under Proteintech Group brand and is not available to purchase from any other manufacturer.

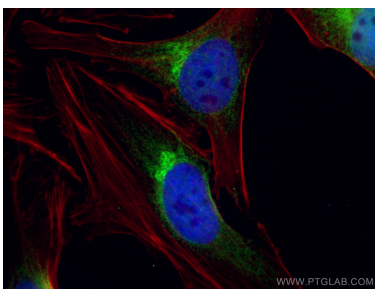
Selected Validation Data



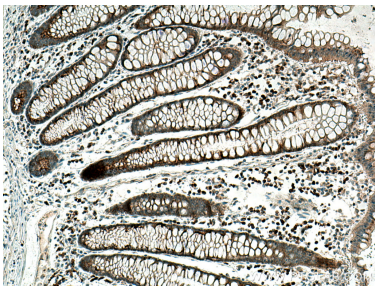
Various lysates were subjected to SDS PAGE followed by western blot with 67777-1-Ig (GOLPH3 antibody) at dilution of 1:10000 incubated at room temperature for 1.5 hours. This data was developed using the same antibody clone with 67777-1-PBS in a different storage buffer formulation.



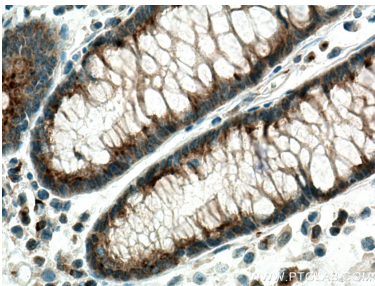
WB result of GOLPH3 antibody (67777-1-Ig; 1:10000; incubated at room temperature for 1.5 hours) with sh-Control and sh-GOLPH3 transfected HeLa cells. This data was developed using the same antibody clone with 67777-1-PBS in a different storage buffer formulation.



Immunofluorescent analysis of (4% PFA) fixed HeLa cells using GOLPH3 antibody (67777-1-Ig, Clone: 3H2A5 ) at dilution of 1:400 and CoraLite®488-Conjugated AffiniPure Goat Anti-Mouse IgG(H+L), CL594-Phalloidin (red). This data was developed using the same antibody clone with 67777-1-PBS in a different storage buffer formulation.



Immunohistochemical analysis of paraffin-embedded human colon cancer tissue slide using 67777-1-Ig (GOLPH3 antibody) at dilution of 1:1000 (under 40x lens). Heat mediated antigen retrieval with Tris-EDTA buffer (pH 9.0). This data was developed using the same antibody clone with 67777-1-PBS in a different storage buffer formulation.



Immunohistochemical analysis of paraffin-embedded human colon cancer tissue slide using 67777-1-Ig (GOLPH3 antibody) at dilution of 1:1000 (under 40x lens). Heat mediated antigen retrieval with Tris-EDTA buffer (pH 9.0). This data was developed using the same antibody clone with 67777-1-PBS in a different storage buffer formulation.