

KLHL25 Monoclonal antibody

Catalog Number: 67774-1-Ig

Basic Information

Catalog Number:

67774-1-Ig

Size:

1000 µg/ml

Source:

Mouse

Isotype:

IgG1

Immunogen Catalog Number:

AG27037

GenBank Accession Number:

BC028100

GeneID (NCBI):

64410

UNIPROT ID:

Q9H0H3

Full Name:

kelch-like 25 (Drosophila)

Observed MW:

66 kDa

Purification Method:

Protein G purification

CloneNo.:

1D8B8

Recommended Dilutions:

WB 1:1000-1:6000

IHC 1:300-1:1200

Applications

Tested Applications:

IHC, WB, ELISA

Species Specificity:

Human, Mouse

**Note-IHC: suggested antigen retrieval with
TE buffer pH 9.0; (*) Alternatively, antigen
retrieval may be performed with citrate
buffer pH 6.0**

Positive Controls:

WB : HEK-293 cells, HT-29 cells, HepG2 cells, NCCIT
cells, MOLT-4 cells, Raji cells, Ramos cells, Daudi cells

IHC : mouse testis tissue,

Background Information

Storage

Storage:

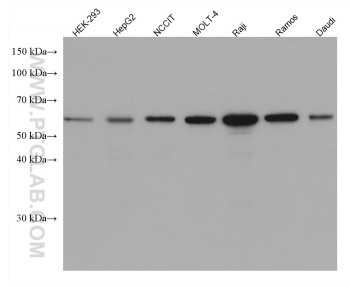
Store at -20°C.

Storage Buffer:

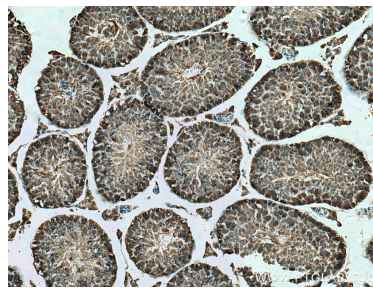
PBS with 0.02% sodium azide and 50% glycerol pH 7.3.

Aliquoting is unnecessary for -20°C storage

Selected Validation Data



Various lysates were subjected to SDS PAGE followed by western blot with 67774-1-Ig (KLHL25 antibody) at dilution of 1:3000 incubated at room temperature for 1.5 hours.



Immunohistochemical analysis of paraffin-embedded mouse testis tissue slide using 67774-1-Ig (KLHL25 antibody) at dilution of 1:600 (under 10x lens). Heat mediated antigen retrieval with Tris-EDTA buffer (pH 9.0).