

For Research Use Only

PSMD2 Monoclonal antibody

Catalog Number: 67770-1-Ig



Basic Information

Catalog Number: 67770-1-Ig	GenBank Accession Number: BC002368	Purification Method: Protein A purification
Size: 500 µg/ml	GeneID (NCBI): 5708	CloneNo.: 1G7G5
Source: Mouse	UNIPROT ID: Q13200	Recommended Dilutions: WB 1:20000-1:100000
Isotype: IgG2a	Full Name: proteasome (prosome, macropain) 26S subunit, non-ATPase, 2	
Immunogen Catalog Number: AG6543	Calculated MW: 100 kDa	
	Observed MW: 100 kDa	

Applications

Tested Applications: WB, ELISA	Positive Controls: WB: A549 cells, HeLa cells, HepG2 cells, HEK-293 cells, Jurkat cells, K-562 cells, HSC-T6 cells, NIH/3T3 cells, 4T1 cells
Species Specificity: Human, mouse, rat	

Background Information

Tumor necrosis factor type 1 receptor-associated protein 2 (TRAP2), encoded by PSMD2 gene, is a non-ATPase regulatory subunit of the 26S proteasome which is involved in the ATP-dependent degradation of ubiquitinated proteins. The 26S proteasome is a multicatalytic proteinase complex with a highly ordered structure composed of 2 complexes, a 20S core and a 19S regulator. The 19S regulator is composed of a base, which contains 6 ATPase subunits and 2 non-ATPase subunits, and a lid, which contains up to 10 non-ATPase subunits. TRAP2 may also participate in the TNF signalling pathway since it interacts with the tumor necrosis factor type 1 receptor.

Storage

Storage:
Store at -20°C.
Storage Buffer:
PBS with 0.02% sodium azide and 50% glycerol pH 7.3.
Aliquoting is unnecessary for -20°C storage

For technical support and original validation data for this product please contact:

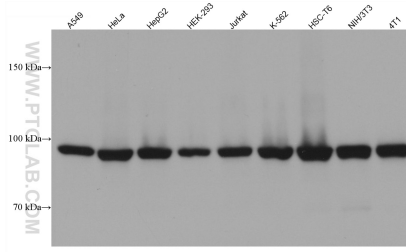
T: 4006900926

E: Proteintech-CN@ptglab.com

W: ptgcn.com

This product is exclusively available under Proteintech Group brand and is not available to purchase from any other manufacturer.

Selected Validation Data



Various lysates were subjected to SDS PAGE followed by western blot with 67770-1-Ig (PSMD2 antibody) at dilution of 1:50000 incubated at room temperature for 1.5 hours.