

For Research Use Only

# ALCAM Monoclonal antibody

Catalog Number: 67768-1-Ig



## Basic Information

<b>Catalog Number:</b> 67768-1-Ig	<b>GenBank Accession Number:</b> BC137097	<b>Purification Method:</b> Protein G purification
<b>Size:</b> 1000 µg/ml	<b>GeneID (NCBI):</b> 214	<b>CloneNo.:</b> 1F7D6
<b>Source:</b> Mouse	<b>UNIPROT ID:</b> Q13740	<b>Recommended Dilutions:</b> WB 1:5000-1:50000 IHC 1:500-1:2000 IF 1:200-1:800
<b>Isotype:</b> IgG1	<b>Full Name:</b> activated leukocyte cell adhesion molecule	
<b>Immunogen Catalog Number:</b> AG16892	<b>Calculated MW:</b> 583 aa, 65 kDa	
	<b>Observed MW:</b> 90-100 kDa	

## Applications

### Tested Applications:

IF-P, IHC, WB, ELISA

### Species Specificity:

Human

**Note-IHC: suggested antigen retrieval with TE buffer pH 9.0; (\*) Alternatively, antigen retrieval may be performed with citrate buffer pH 6.0**

### Positive Controls:

WB : HT-1080 cells, U2OS cells, A549 cells, LNCaP cells

IHC : human breast cancer tissue,

IF : human breast cancer tissue,

## Background Information

Activated leukocyte cell adhesion molecule (ALCAM, also known as CD166) is a cell adhesion molecule that belongs to the immunoglobulin superfamily. It is involved in cell-cell adhesion through homophilic and heterophilic (to CD6) interactions. ALCAM is widely expressed in a variety of normal tissues. Altered ALCAM expression has been associated with the differentiation state and progression in some neoplasms including melanoma, prostate, colorectal, and breast cancers (PMID: 20461761; 18172759).

## Storage

### Storage:

Store at -20°C. Stable for one year after shipment.

### Storage Buffer:

PBS with 0.02% sodium azide and 50% glycerol pH 7.3.

Aliquoting is unnecessary for -20°C storage

For technical support and original validation data for this product please contact:

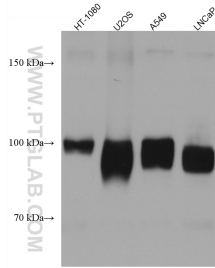
T: 4006900926

E: Proteintech-CN@ptglab.com

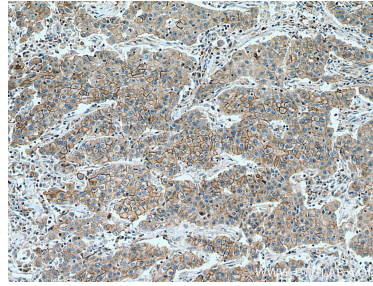
W: ptgcn.com

**This product is exclusively available under Proteintech Group brand and is not available to purchase from any other manufacturer.**

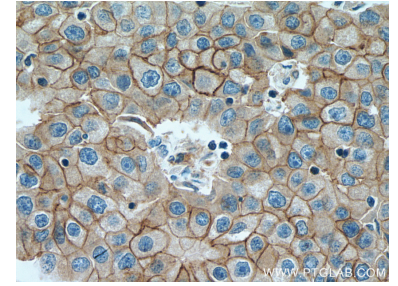
## Selected Validation Data



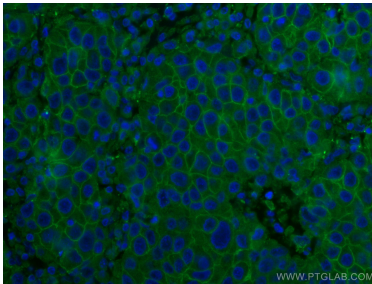
Various lysates were subjected to SDS PAGE followed by western blot with 67768-1-Ig (ALCAM antibody) at dilution of 1:10000 incubated at room temperature for 1.5 hours.



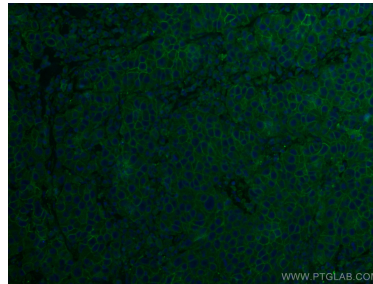
Immunohistochemical analysis of paraffin-embedded human breast cancer tissue slide using 67768-1-Ig (ALCAM antibody) at dilution of 1:1000 (under 10x lens). Heat mediated antigen retrieval with Tris-EDTA buffer (pH 9.0).



Immunohistochemical analysis of paraffin-embedded human breast cancer tissue slide using 67768-1-Ig (ALCAM antibody) at dilution of 1:1000 (under 40x lens). Heat mediated antigen retrieval with Tris-EDTA buffer (pH 9.0).



Immunofluorescent analysis of (4% PFA) fixed human breast cancer tissue using ALCAM antibody (67768-1-Ig, Clone: 1F7D6) at dilution of 1:400 and CoraLite®488-Conjugated AffiniPure Goat Anti-Mouse IgG(H+L).



Immunofluorescent analysis of (4% PFA) fixed human breast cancer tissue using ALCAM antibody (67768-1-Ig, Clone: 1F7D6) at dilution of 1:400 and CoraLite®488-Conjugated AffiniPure Goat Anti-Mouse IgG(H+L).