

For Research Use Only

Human IgG lambda chain Monoclonal antibody, PBS Only

Catalog Number: 67762-1-PBS



Basic Information

Catalog Number:

67762-1-PBS

Size:

1mg/ml

Source:

Mouse

Isotype:

IgG2a

Immunogen Catalog Number:

AG14783

GenBank Accession Number:

BC007782

GeneID (NCBI):

3537

Full Name:

immunoglobulin lambda constant 1
(Mcg marker)

Calculated MW:

233 aa, 25 kDa

Observed MW:

~25 kDa

Purification Method:

Protein A purification

CloneNo.:

1D12B5

Applications

Tested Applications:

WB, IHC, IF-P, Indirect ELISA

Species Specificity:

human

Background Information

This antibody detects Lambda chain of human IgG.

Storage

Storage:

Store at -80°C.

The product is shipped with ice packs. Upon receipt, store it immediately at -80°C

Storage Buffer:

PBS Only

For technical support and original validation data for this product please contact:

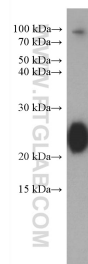
T: 4006900926

E: Proteintech-CN@ptglab.com

W: ptgcn.com

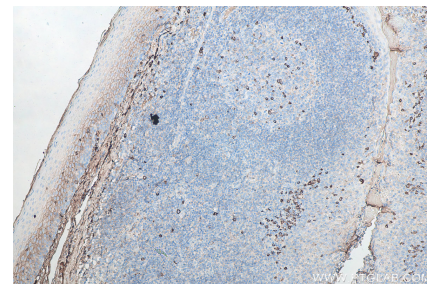
This product is exclusively available under Proteintech Group brand and is not available to purchase from any other manufacturer.

Selected Validation Data

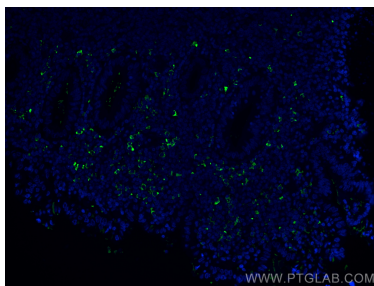


80 nL human plasma were subjected to SDS PAGE followed by western blot with 67762-1-Ig (Human IgG lambda chain antibody) at dilution of 1:5000 incubated at room temperature for 1.5 hours. This data was developed using the same antibody clone with 67762-1-PBS in a different storage buffer formulation.

Immunohistochemical analysis of paraffin-embedded human tonsillitis tissue slide using 67762-1-Ig (Human IgG lambda chain antibody) at dilution of 1:20000 (under 10x lens). Heat mediated antigen retrieval with Tris-EDTA buffer (pH 9.0). This data was developed using the same antibody clone with 67762-1-PBS in a different storage buffer formulation.



Immunohistochemical analysis of paraffin-embedded human tonsillitis tissue slide using 67762-1-Ig (Human IgG lambda chain antibody) at dilution of 1:10000 (under 10x lens). Heat mediated antigen retrieval with Tris-EDTA buffer (pH 9.0). This data was developed using the same antibody clone with 67762-1-PBS in a different storage buffer formulation.



Immunofluorescent analysis of (4% PFA) fixed human appendicitis tissue using Human IgG lambda chain antibody (67762-1-Ig, Clone: 1D12B5) at dilution of 1:400 and CoraLite®488-Conjugated AffiniPure Goat Anti-Mouse IgG(H+L). This data was developed using the same antibody clone with 67762-1-PBS in a different storage buffer formulation.