

For Research Use Only

# PRKAR2A Monoclonal antibody, PBS Only



Catalog Number: 67751-1-PBS

## Basic Information

Catalog Number: 67751-1-PBS	GenBank Accession Number: BC002763	Purification Method: Protein G purification
Size: 1 mg/ml	GeneID (NCBI): 5576	CloneNo.: 1B2B3
Source: Mouse	UNIPROT ID: P13861	
Isotype: IgG1	Full Name: protein kinase, cAMP-dependent, regulatory, type II, alpha	
Immunogen Catalog Number: AG29893	Calculated MW: 43 kDa	
	Observed MW: 50 kDa	

## Applications

Tested Applications:  
WB, Indirect ELISA, IHC, IF

Species Specificity:  
Human, rat, mouse

## Background Information

The effects of cAMP in most tissues and cell types are mainly modulated via protein kinase A, a heterotetrameric protein complex consisting of two regulatory and two catalytic subunits. The regulatory subunit of cAMP-dependent protein kinase (PRKAR2A) is one of the regulatory subunits and the gene is located on chromosome region 3p21.3-p21.2. The expression of PRKAR2A is tightly regulated during spermatogenesis, a significant increase in expression of this gene was also found in the human myometrium during pregnancy.

## Storage

Storage:  
Store at -80°C.  
The product is shipped with ice packs. Upon receipt, store it immediately at -80°C

Storage Buffer:  
PBS Only

For technical support and original validation data for this product please contact:

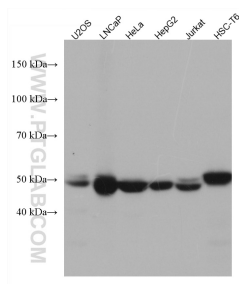
T: 4006900926

E: [Proteintech-CN@ptglab.com](mailto:Proteintech-CN@ptglab.com)

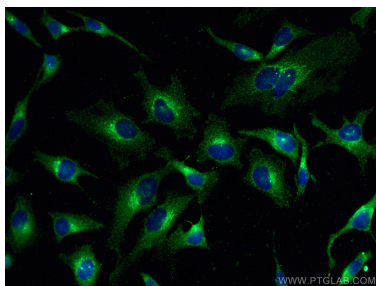
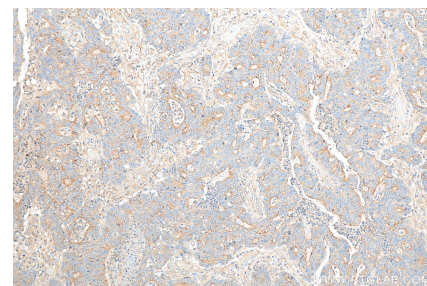
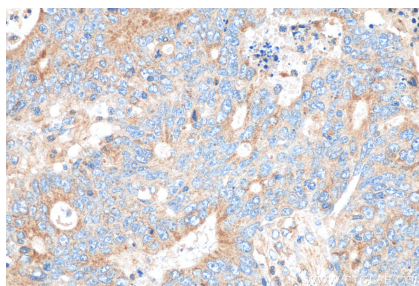
W: [ptgcn.com](http://ptgcn.com)

This product is exclusively available under Proteintech Group brand and is not available to purchase from any other manufacturer.

## Selected Validation Data



Various lysates were subjected to SDS PAGE followed by western blot with 67751-1-Ig (PRKAR2A antibody) at dilution of 1:5000 incubated at room temperature for 1.5 hours. This data was developed using the same antibody clone with 67751-1-PBS in a different storage buffer formulation.



Immunofluorescent analysis of (-20°C Methanol) fixed HeLa cells using PRKAR2A antibody (67751-1-Ig, Clone: 1B2B3) at dilution of 1:400 and CoraLite®488-Conjugated AffiniPure Goat Anti-Mouse IgG(H+L). This data was developed using the same antibody clone with 67751-1-PBS in a different storage buffer formulation.