

For Research Use Only

# PRKAR2A Monoclonal antibody

Catalog Number: 67751-1-Ig **1 Publications**



## Basic Information

<b>Catalog Number:</b> 67751-1-Ig	<b>GenBank Accession Number:</b> BC002763	<b>Purification Method:</b> Protein G purification
<b>Size:</b> 1000 µg/ml	<b>GeneID (NCBI):</b> 5576	<b>CloneNo.:</b> 1B2B3
<b>Source:</b> Mouse	<b>UNIPROT ID:</b> P13861	<b>Recommended Dilutions:</b> WB 1:2000-1:10000 IHC 1:400-1:1600 IF/ICC 1:200-1:800
<b>Isotype:</b> IgG1	<b>Full Name:</b> protein kinase, cAMP-dependent, regulatory, type II, alpha	
<b>Immunogen Catalog Number:</b> AG29893	<b>Calculated MW:</b> 43 kDa	
	<b>Observed MW:</b> 50 kDa	

## Applications

<b>Tested Applications:</b> IF/ICC, IHC, WB, ELISA	<b>Positive Controls:</b> <b>WB :</b> U2OS cells, NIH/3T3 cells, HSC-T6 cells, Jurkat cells, HepG2 cells, HeLa cells, LNCaP cells <b>IHC :</b> human colon cancer tissue, mouse colon tissue <b>IF/ICC :</b> HeLa cells,
<b>Cited Applications:</b> WB	
<b>Species Specificity:</b> Human, rat, mouse	
<b>Cited Species:</b> human	
<b>Note-IHC: suggested antigen retrieval with TE buffer pH 9.0; (*) Alternatively, antigen retrieval may be performed with citrate buffer pH 6.0</b>	

## Background Information

The effects of cAMP in most tissues and cell types are mainly modulated via protein kinase A, a heterotetrameric protein complex consisting of two regulatory and two catalytic subunits. The regulatory subunit of cAMP-dependent protein kinase (PRKAR2A) is one of the regulatory subunits and the gene is located on chromosome region 3p21.3-p21.2. The expression of PRKAR2A is tightly regulated during spermatogenesis, a significant increase in expression of this gene was also found in the human myometrium during pregnancy.

## Notable Publications

Author	Pubmed ID	Journal	Application
Ryan D Mouery	39018246	Cell Rep	WB

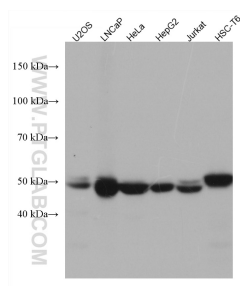
## Storage

**Storage:**  
Store at -20°C. Stable for one year after shipment.  
**Storage Buffer:**  
PBS with 0.02% sodium azide and 50% glycerol pH 7.3.  
Aliquoting is unnecessary for -20°C storage

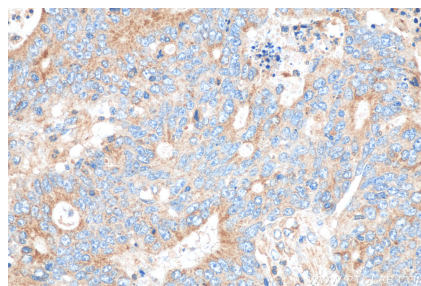
For technical support and original validation data for this product please contact:  
T: 4006900926 E: Proteintech-CN@ptglab.com W: ptgcn.com

This product is exclusively available under Proteintech Group brand and is not available to purchase from any other manufacturer.

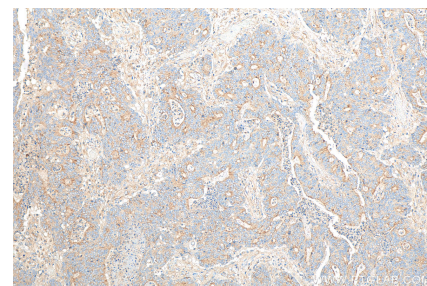
## Selected Validation Data



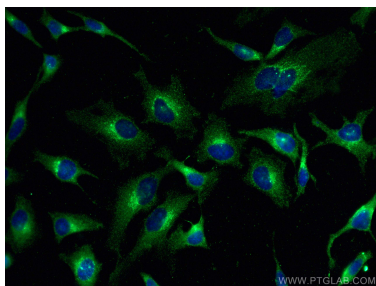
Various lysates were subjected to SDS PAGE followed by western blot with 67751-1-Ig (PRKAR2A antibody) at dilution of 1:5000 incubated at room temperature for 1.5 hours.



Immunohistochemical analysis of paraffin-embedded human colon cancer tissue slide using 67751-1-Ig (PRKAR2A antibody) at dilution of 1:800 (under 40x lens). Heat mediated antigen retrieval with Tris-EDTA buffer (pH 9.0).



Immunohistochemical analysis of paraffin-embedded human colon cancer tissue slide using 67751-1-Ig (PRKAR2A antibody) at dilution of 1:800 (under 10x lens). Heat mediated antigen retrieval with Tris-EDTA buffer (pH 9.0).



Immunofluorescent analysis of (-20°C Methanol) fixed HeLa cells using PRKAR2A antibody (67751-1-Ig, Clone: 1B2B3) at dilution of 1:400 and CoraLite®488-Conjugated Goat Anti-Mouse IgG(H+L).