

# RUVBL1 Monoclonal antibody, PBS Only

Catalog Number: 67750-1-PBS

## Basic Information

<b>Catalog Number:</b> 67750-1-PBS	<b>GenBank Accession Number:</b> BC002993	<b>Purification Method:</b> Protein G purification
<b>Size:</b> 1 mg/ml	<b>GeneID (NCBI):</b> 8607	<b>CloneNo.:</b> 1F2D9
<b>Source:</b> Mouse	<b>UNIPROT ID:</b> Q9Y265	
<b>Isotype:</b> IgG1	<b>Full Name:</b> RuvB-Like 1 (E. coli)	
<b>Immunogen Catalog Number:</b> AG16688	<b>Calculated MW:</b> 456 aa, 50 kDa	
	<b>Observed MW:</b> 50 kDa	

## Applications

**Tested Applications:**  
WB, Indirect ELISA

**Species Specificity:**  
Human, rat

## Background Information

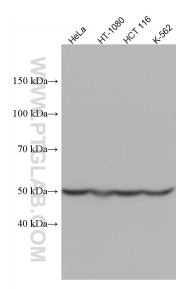
RUVBL1 is a member of the AAA (ATPase associated with diverse cellular activities) family of proteins that is associated with several chromatin-remodelling complexes and has important roles in transcriptional regulation, the DNA damage response, telomerase activity, snoRNP assembly, cellular transformation and cancer metastasis [PMID: 21617703]. It consists of 456 amino acids (50 kDa) and interacts with TATA-binding protein (TBP), which is a central component for transcriptional regulation by forming complexes with various transcription regulators. RUVBL1 is a component of a large nuclear protein complex, possibly the RNA polymerase II holoenzyme. RUVBL1 is also highly homologous to RuvB proteins that function as a DNA helicase promote branch migration of the Holliday junction [PMID: 9588198].

## Storage

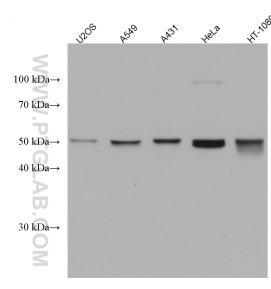
**Storage:**  
Store at -80°C.  
**The product is shipped with ice packs. Upon receipt, store it immediately at -80°C**

**Storage Buffer:**  
PBS Only

## Selected Validation Data



Various lysates were subjected to SDS PAGE followed by western blot with 67750-1-Ig (RUVBL1 antibody) at dilution of 1:2000 incubated at room temperature for 1.5 hours. This data was developed using the same antibody clone with 67750-1-PBS in a different storage buffer formulation.



Various lysates were subjected to SDS PAGE followed by western blot with 67750-1-Ig (RUVBL1 antibody) at dilution of 1:10000 incubated at room temperature for 1.5 hours. This data was developed using the same antibody clone with 67750-1-PBS in a different storage buffer formulation.