

For Research Use Only

REL Monoclonal antibody, PBS Only

Catalog Number: 67747-1-PBS



Basic Information

Catalog Number:

67747-1-PBS

Size:

1 mg/ml

Source:

Mouse

Isotype:

IgG1

Immunogen Catalog Number:

AG26803

GenBank Accession Number:

NM_001291746

GeneID (NCBI):

5966

UNIPROT ID:

Q04864

Full Name:

v-rel reticuloendotheliosis viral
oncogene homolog (avian)

Calculated MW:

69 kDa

Observed MW:

68 kDa, 80 kDa

Purification Method:

Protein G purification

CloneNo.:

1F6A4

Applications

Tested Applications:

WB, Indirect ELISA

Species Specificity:

Human

Background Information

REL, also known as, Proto-oncogene c-Rel, is a 619 amino acid protein, which may play a role in differentiation and lymphopoiesis. NF-kappa-B is a homo- or heterodimeric complex formed by the Rel-like domain-containing proteins RELA/p65, RELB, NFKB1/p105, NFKB1/p50, REL and NFKB2/p52. The NF-kappa-B heterodimer RELA/p65-c-Rel is a transcriptional activator. The full-length 80-kDa c-Rel was identified (PMID: 9857058).

Storage

Storage:

Store at -80°C.

The product is shipped with ice packs. Upon receipt, store it immediately at -80°C

Storage Buffer:

PBS Only

For technical support and original validation data for this product please contact:

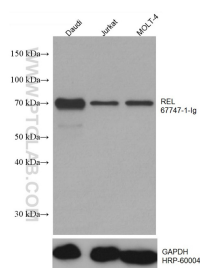
T: 4006900926

E: Proteintech-CN@ptglab.com

W: ptgcn.com

This product is exclusively available under Proteintech Group brand and is not available to purchase from any other manufacturer.

Selected Validation Data



Various lysates were subjected to SDS PAGE followed by western blot with 67747-1-Ig (REL antibody) at dilution of 1:3000 incubated at room temperature for 1.5 hours. The membrane was stripped and reblotted with HRP-conjugated GAPDH Monoclonal antibody (HRP-60004) as loading control. This data was developed using the same antibody clone with 67747-1-PBS in a different storage buffer formulation.