

For Research Use Only

# REL Monoclonal antibody

Catalog Number: 67747-1-Ig



## Basic Information

Catalog Number:

67747-1-Ig

Size:

1000 µg/ml

Source:

Mouse

Isotype:

IgG1

Immunogen Catalog Number:

AG26803

GenBank Accession Number:

NM\_001291746

GeneID (NCBI):

5966

UNIPROT ID:

Q04864

Full Name:

v-rel reticuloendotheliosis viral oncogene homolog (avian)

Calculated MW:

69 kDa

Observed MW:

68 kDa, 80 kDa

Purification Method:

Protein G purification

CloneNo.:

1F6A4

Recommended Dilutions:

WB 1:1000-1:6000

## Applications

Tested Applications:

WB, ELISA

Species Specificity:

Human

Positive Controls:

WB : Daudi cells, HEK-293 cells, Jurkat cells, MOLT-4 cells

## Background Information

REL, also known as, Proto-oncogene c-Rel, is a 619 amino acid protein, which may play a role in differentiation and lymphopoiesis. NF-kappa-B is a homo- or heterodimeric complex formed by the Rel-like domain-containing proteins RELA/p65, RELB, NFKB1/p105, NFKB1/p50, REL and NFKB2/p52. The NF-kappa-B heterodimer RELA/p65-c-Rel is a transcriptional activator. The full-length 80-kDa c-Rel was identified (PMID: 9857058).

## Storage

Storage:

Store at -20°C. Stable for one year after shipment.

Storage Buffer:

PBS with 0.02% sodium azide and 50% glycerol pH 7.3.

Aliquoting is unnecessary for -20°C storage

For technical support and original validation data for this product please contact:

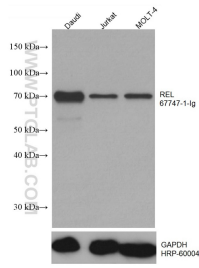
T: 4006900926

E: [Proteintech-CN@ptglab.com](mailto:Proteintech-CN@ptglab.com)

W: [ptgcn.com](http://ptgcn.com)

This product is exclusively available under Proteintech Group brand and is not available to purchase from any other manufacturer.

## Selected Validation Data



Various lysates were subjected to SDS PAGE followed by western blot with 67747-1-Ig (REL antibody) at dilution of 1:3000 incubated at room temperature for 1.5 hours. The membrane was stripped and reblotted with HRP-conjugated GAPDH Monoclonal antibody (HRP-60004) as loading control.