

For Research Use Only

# SKP1 Monoclonal antibody, PBS Only

Catalog Number: 67745-1-PBS



## Basic Information

Catalog Number: 67745-1-PBS	GenBank Accession Number: BC009839	Purification Method: Protein A purification
Size: 1 mg/ml	GeneID (NCBI): 6500	CloneNo.: 1D5G4
Source: Mouse	UNIPROT ID: P63208	
Isotype: IgG2b	Full Name: S-phase kinase-associated protein 1	
Immunogen Catalog Number: AG30709	Calculated MW: 19 kDa	
	Observed MW: 18-20 kDa	

## Applications

Tested Applications:  
WB, Indirect ELISA, IF

Species Specificity:  
Human, mouse, rat

## Background Information

SKP1 (S-phase kinase-associated protein 1) is also named as EMC19, OCP2, SKP1A, TCEB1L, belongs to the SKP1 family. It is an essential component of the SCF (SKP1-CUL1-F-box protein) ubiquitin ligase complex, which mediates the ubiquitination of proteins involved in cell cycle progression, signal transduction and transcription.

## Storage

Storage:  
Store at -80°C.  
The product is shipped with ice packs. Upon receipt, store it immediately at -80°C

Storage Buffer:  
PBS Only

For technical support and original validation data for this product please contact:

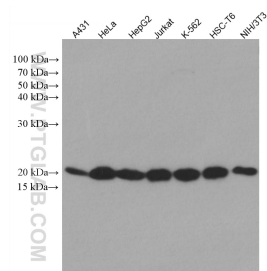
T: 4006900926

E: [Proteintech-CN@ptglab.com](mailto:Proteintech-CN@ptglab.com)

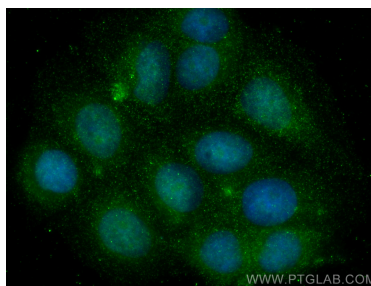
W: [ptgcn.com](http://ptgcn.com)

This product is exclusively available under Proteintech Group brand and is not available to purchase from any other manufacturer.

## Selected Validation Data



Various lysates were subjected to SDS PAGE followed by western blot with 67745-1-Ig (SKP1 antibody) at dilution of 1:10000 incubated at room temperature for 1.5 hours. This data was developed using the same antibody clone with 67745-1-PBS in a different storage buffer formulation.



Immunofluorescent analysis of (4% PFA) fixed MCF-7 cells using SKP1 antibody (67745-1-Ig, Clone: 1D5G4) at dilution of 1:800 and CoraLite®488-Conjugated AffiniPure Goat Anti-Mouse IgG(H+L). This data was developed using the same antibody clone with 67745-1-PBS in a different storage buffer formulation.