

# SKP1 Monoclonal antibody

Catalog Number: 67745-1-Ig

## Basic Information

Catalog Number:

67745-1-Ig

Size:

1000 µg/ml

Source:

Mouse

Isotype:

IgG2b

Immunogen Catalog Number:

AG30709

GenBank Accession Number:

BC009839

GeneID (NCBI):

6500

UNIPROT ID:

P63208

Full Name:

S-phase kinase-associated protein 1

Calculated MW:

19 kDa

Observed MW:

18-20 kDa

Purification Method:

Protein A purification

CloneNo.:

1D5G4

Recommended Dilutions:

WB 1:5000-1:50000

IF/ICC 1:400-1:1600

## Applications

Tested Applications:

IF/ICC, WB, ELISA

Species Specificity:

Human, mouse, rat

Positive Controls:

WB : A431 cells, HeLa cells, HepG2 cells, Jurkat cells, K-562 cells, HSC-T6 cells, NIH/3T3 cells

IF/ICC : MCF-7 cells,

## Background Information

SKP1(S-phase kinase-associated protein 1) is also named as EMC19, OCP2, SKP1A, TCEB1L, belongs to the SKP1 family. It is an essential component of the SCF (SKP1-CUL1-F-box protein) ubiquitin ligase complex, which mediates the ubiquitination of proteins involved in cell cycle progression, signal transduction and transcription.

## Storage

Storage:

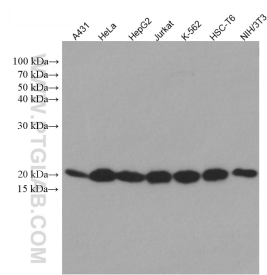
Store at -20°C. Stable for one year after shipment.

Storage Buffer:

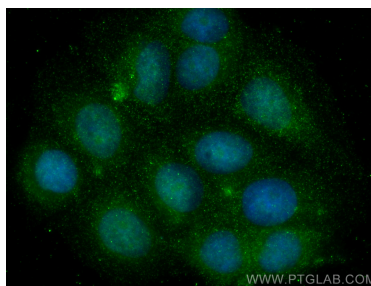
PBS with 0.02% sodium azide and 50% glycerol pH 7.3.

Aliquoting is unnecessary for -20°C storage

## Selected Validation Data



Various lysates were subjected to SDS PAGE followed by western blot with 67745-1-Ig (SKP1 antibody) at dilution of 1:10000 incubated at room temperature for 1.5 hours.



Immunofluorescent analysis of (4% PFA) fixed MCF-7 cells using SKP1 antibody (67745-1-Ig, Clone: 1D5G4) at dilution of 1:800 and CoraLite®488-Conjugated AffiniPure Goat Anti-Mouse IgG(H+L).