

For Research Use Only

# Alpha smooth muscle actin specific Monoclonal antibody, PBS Only

Catalog Number: 67735-1-PBS



## Basic Information

<b>Catalog Number:</b> 67735-1-PBS	<b>GenBank Accession Number:</b> NM_001613	<b>Purification Method:</b> Protein G purification
<b>Concentration:</b> 1000 µg/ml	<b>GeneID (NCBI):</b> 59	<b>CloneNo.:</b> 1E9A11
<b>Source:</b> Mouse	<b>UNIPROT ID:</b> P62736	
<b>Isotype:</b> IgG1	<b>Full Name:</b> actin, alpha 2, smooth muscle, aorta	
	<b>Calculated MW:</b> 42 kDa	
	<b>Observed MW:</b> 42 kDa	

## Applications

**Tested Applications:**  
WB, IHC, IF/ICC, IF-P, IF-Fro, FC (Intra), ELISA

**Species Specificity:**  
human, mouse, rat, pig, rabbit

## Background Information

ACTA2 (also known as  $\alpha$ -smooth muscle actin or  $\alpha$ -SMA) belongs to the actin family. Actins are highly conserved proteins that are involved in various types of cell motility and are ubiquitously expressed in all eukaryotic cells. ACTA2 is primarily expressed in vascular smooth muscle and anti-ACTA2 is commonly used to marker smooth muscle cells.

## Storage

**Storage:**  
Store at -80°C.  
**The product is shipped with ice packs. Upon receipt, store it immediately at -80°C**

**Storage Buffer:**  
PBS Only

For technical support and original validation data for this product please contact:

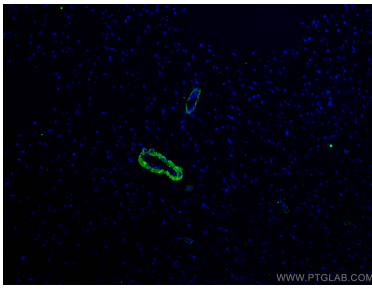
T: 4006900926

E: [Proteintech-CN@ptglab.com](mailto:Proteintech-CN@ptglab.com)

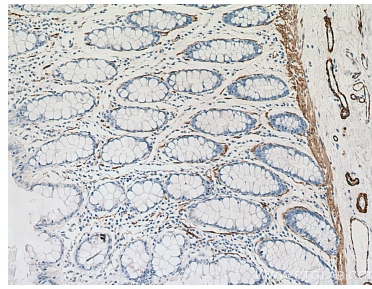
W: [ptgcn.com](http://ptgcn.com)

**This product is exclusively available under Proteintech Group brand and is not available to purchase from any other manufacturer.**

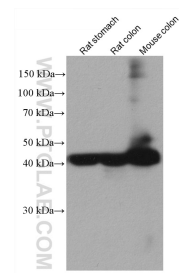
## Selected Validation Data



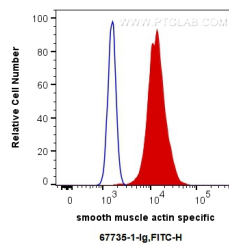
Immunofluorescent analysis of (4% PFA) fixed rat heart tissue using a-SMA specific antibody (67735-1-Ig, Clone: 1E9A11) at dilution of 1:400 and CoraLite®488-Conjugated AffiniPure Goat Anti-Mouse IgG(H+L). This data was developed using the same antibody clone with 67735-1-PBS in a different storage buffer formulation.



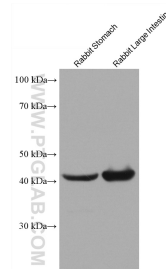
Immunohistochemical analysis of paraffin-embedded human colon tissue slide using 67735-1-Ig (a-SMA specific antibody) at dilution of 1:5000 (under 10x lens). Heat mediated antigen retrieval with Tris-EDTA buffer (pH 9.0). This data was developed using the same antibody clone with 67735-1-PBS in a different storage buffer formulation.



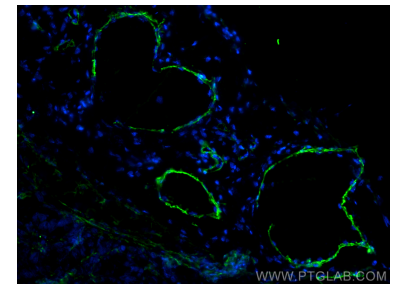
Various lysates were subjected to SDS PAGE followed by western blot with 67735-1-Ig (a-SMA specific antibody) at dilution of 1:50000 incubated at room temperature for 1.5 hours. This data was developed using the same antibody clone with 67735-1-PBS in a different storage buffer formulation.



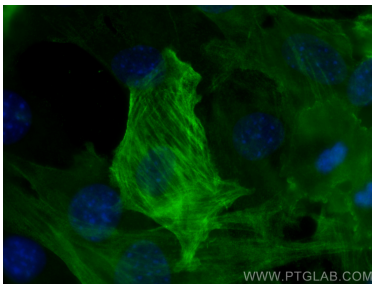
1X10<sup>6</sup> C2C12 cells were intracellularly stained with 0.4 ug Anti-Human smooth muscle actin specific (67735-1-Ig, Clone:1E9A11) and CoraLite®488-Conjugated AffiniPure Goat Anti-Mouse IgG(H+L) at dilution 1:1000 (red), or 0.4 ug Control Antibody. Cells were fixed with 4% PFA and permeabilized with Flow Cytometry Perm Buffer (PF00011-C). This data was developed using the same antibody clone with 67735-1-PBS in a different storage buffer formulation.



Various lysates were subjected to SDS PAGE followed by western blot with 67735-1-Ig (smooth muscle actin specific antibody) at dilution of 1:50000 incubated at room temperature for 1.5 hours. This data was developed using the same antibody clone with 67735-1-PBS in a different storage buffer formulation.



Immunofluorescent analysis of (4% PFA) fixed frozen OCT-embedded mouse breast cancer using Alpha smooth muscle actin specific antibody (67735-1-Ig, Clone: 1E9A11) at dilution of 1:400 and CoraLite®488-Conjugated Goat Anti-Mouse IgG(H+L) (SA00013-1). This data was developed using the same antibody clone with 67735-1-PBS in a different storage buffer formulation.



Immunofluorescent analysis of (-20°C Methanol) fixed C2C12 cells using smooth muscle actin specific antibody (67735-1-Ig, Clone: 1E9A11) at dilution of 1:400 and CoraLite®488-Conjugated AffiniPure Goat Anti-Mouse IgG(H+L). This data was developed using the same antibody clone with 67735-1-PBS in a different storage buffer formulation.