

For Research Use Only

METTL3 Monoclonal antibody, PBS Only



Catalog Number: 67733-1-PBS

Featured Product

Basic Information

Catalog Number:

67733-1-PBS

Size:

1mg/ml

Source:

Mouse

Isotype:

IgG1

Immunogen Catalog Number:

AG7110

GenBank Accession Number:

BC001650

GeneID (NCBI):

56339

UNIPROT ID:

Q86U44

Full Name:

methyltransferase like 3

Calculated MW:

64 kDa

Observed MW:

65-70 kDa

Purification Method:

Protein G purification

CloneNo.:

2D8H1

Applications

Tested Applications:

WB, IHC, IF-P, Indirect ELISA

Species Specificity:

Human, mouse

Background Information

METTL3 is a key S-adenosyl-L-methionine-binding subunit, which is component of a complex multicomponent enzyme that catalyzes the methylation of internal adenosine residues in eukaryotic mRNA, forming N6-methyladenosine. It contains 2 putative nuclear localization signals and 2 consensus methylation motifs. The calculated molecular weight of METTL3 is 64 kDa, but modified METTL3 is about 65-70 kDa.

Storage

Storage:

Store at -80°C.

The product is shipped with ice packs. Upon receipt, store it immediately at -80°C

Storage Buffer:

PBS Only

For technical support and original validation data for this product please contact:

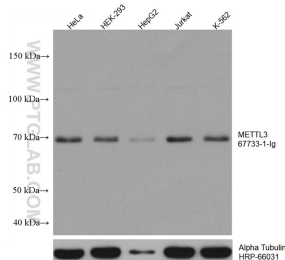
T: 4006900926

E: Proteintech-CN@ptglab.com

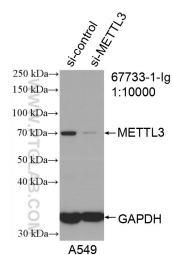
W: ptgcn.com

This product is exclusively available under Proteintech Group brand and is not available to purchase from any other manufacturer.

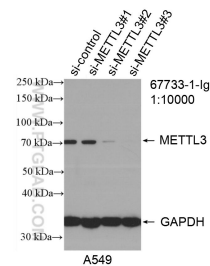
Selected Validation Data



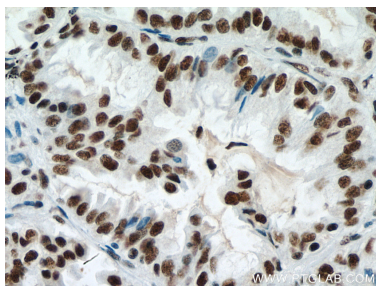
Various lysates were subjected to SDS PAGE followed by western blot with 67733-1-Ig (METTL3 antibody) at dilution of 1:10000 incubated at room temperature for 1.5 hours. The membrane was stripped and reblotted with HRP-conjugated Alpha Tubulin Monoclonal antibody (HRP-66031) as loading control. This data was developed using the same antibody clone with 67733-1-PBS in a different storage buffer formulation.



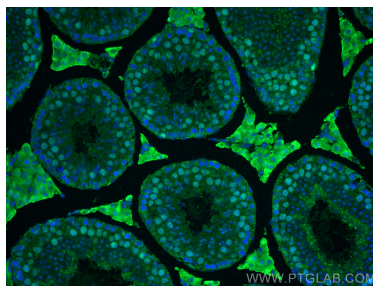
WB result of METTL3 antibody (67733-1-Ig; 1:10000; incubated at room temperature for 1.5 hours) with sh-Control and sh-METTL3 transfected A549 cells. This data was developed using the same antibody clone with 67733-1-PBS in a different storage buffer formulation.



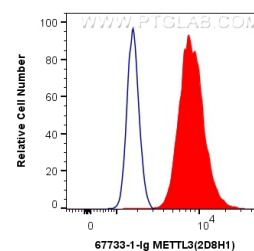
WB result of METTL3 antibody (67733-1-Ig; 1:10000; incubated at room temperature for 1.5 hours) with sh-Control and sh-METTL3 transfected A549 cells. This data was developed using the same antibody clone with 67733-1-PBS in a different storage buffer formulation.



Immunohistochemical analysis of paraffin-embedded human lung cancer tissue slide using 67733-1-Ig (METTL3 antibody) at dilution of 1:1000 (under 40x lens). Heat mediated antigen retrieval with Tris-EDTA buffer (pH 9.0). This data was developed using the same antibody clone with 67733-1-PBS in a different storage buffer formulation.



Immunofluorescent analysis of (4% PFA) fixed mouse testis tissue using METTL3 antibody (67733-1-Ig, Clone: 2D8H1) at dilution of 1:400 and CoraLite®488-Conjugated AffiniPure Goat Anti-Mouse IgG(H+L). This data was developed using the same antibody clone with 67733-1-PBS in a different storage buffer formulation.



1X10⁶ HEK-293 cells were intracellularly stained with 0.4 ug Anti-Human METTL3 (67733-1-Ig, Clone:2D8H1) and CoraLite®488-Conjugated AffiniPure Goat Anti-Mouse IgG(H+L) at dilution 1:1000 (red), or 0.4 ug Control Antibody. Cells were fixed and permeabilized with Transcription Factor Staining Buffer Kit (PF00011). This data was developed using the same antibody clone with 67733-1-PBS in a different storage buffer formulation.