

METTL3 Monoclonal antibody

Catalog Number: 67733-1-Ig

Featured Product

21 Publications

Basic Information

Catalog Number:

67733-1-Ig

Size:

1000 µg/ml

Source:

Mouse

Isotype:

IgG1

Immunogen Catalog Number:

AG7110

GenBank Accession Number:

BC001650

GeneID (NCBI):

56339

UNIPROT ID:

Q86U44

Full Name:

methyltransferase like 3

Calculated MW:

64 kDa

Observed MW:

65-70 kDa

Purification Method:

Protein G purification

CloneNo.:

2D8H1

Recommended Dilutions:

WB 1:5000-1:50000

IHC 1:500-1:2000

IF-P 1:200-1:800

Applications

Tested Applications:

WB, IHC, IF-P, FC (Intra), ELISA

Cited Applications:

WB, IHC, IF, IP, CoIP, RIP

Species Specificity:

Human, mouse

Cited Species:

human, mouse, rat

Note-IHC: suggested antigen retrieval with TE buffer pH 9.0; (*) Alternatively, antigen retrieval may be performed with citrate buffer pH 6.0

Positive Controls:

WB : HeLa cells, A549 cells, HEK-293 cells, HepG2 cells, Jurkat cells, K-562 cells

IHC : human lung cancer tissue, human urothelial carcinoma tissue, human colon cancer tissue, human oesophagus cancer tissue

IF-P : mouse testis tissue,

Background Information

METTL3 is a key S-adenosyl-L-methionine-binding subunit, which is component of a complex multicomponent enzyme that catalyzes the methylation of internal adenosine residues in eukaryotic mRNA, forming N6-methyladenosine. It contains 2 putative nuclear localization signals and 2 consensus methylation motifs. The calculated molecular weight of METTL3 is 64 kDa, but modified METTL3 is about 65-70 kDa.

Notable Publications

Author	Pubmed ID	Journal	Application
Yanan Wang	36293529	Int J Mol Sci	WB, IHC
Zewei Sun	36368640	Clin Immunol	IF, IP
Yang Wang	36333630	Apoptosis	WB

Storage

Storage:

Store at -20°C. Stable for one year after shipment.

Storage Buffer:

PBS with 0.02% sodium azide and 50% glycerol pH 7.3.

Aliquoting is unnecessary for -20°C storage

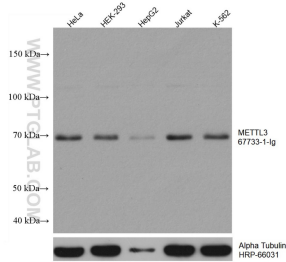
For technical support and original validation data for this product please contact:

T: 4006900926

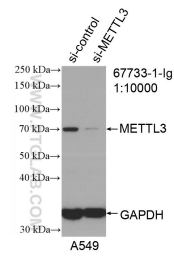
E: Proteintech-CN@ptglab.comW: ptgcn.com

This product is exclusively available under Proteintech Group brand and is not available to purchase from any other manufacturer.

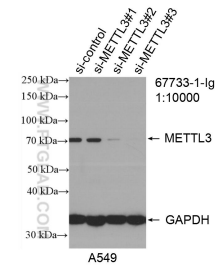
Selected Validation Data



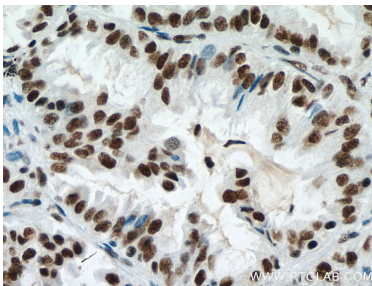
Various lysates were subjected to SDS PAGE followed by western blot with 67733-1-Ig (METTL3 antibody) at dilution of 1:10000 incubated at room temperature for 1.5 hours. The membrane was stripped and reblotted with HRP-conjugated Alpha Tubulin Monoclonal antibody (HRP-66031) as loading control.



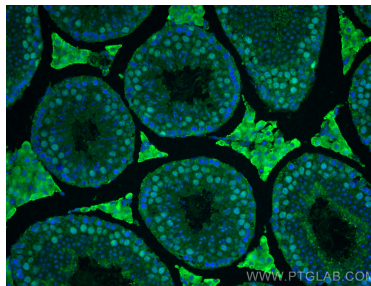
WB result of METTL3 antibody (67733-1-Ig; 1:10000; incubated at room temperature for 1.5 hours) with sh-Control and sh-METTL3 transfected A549 cells.



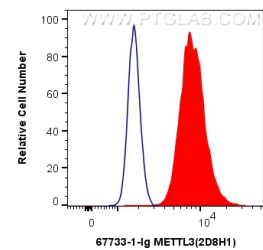
WB result of METTL3 antibody (67733-1-Ig; 1:10000; incubated at room temperature for 1.5 hours) with sh-Control and sh-METTL3 transfected A549 cells.



Immunohistochemical analysis of paraffin-embedded human lung cancer tissue slide using 67733-1-Ig (METTL3 antibody) at dilution of 1:1000 (under 40x lens). Heat mediated antigen retrieval with Tris-EDTA buffer (pH 9.0).



Immunofluorescent analysis of (4% PFA) fixed mouse testis tissue using METTL3 antibody (67733-1-Ig, Clone: 2D8H1) at dilution of 1:400 and CoraLite®488-Conjugated Goat Anti-Mouse IgG(H+L).



1X10⁶ HEK-293 cells were intracellularly stained with 0.4 ug Anti-Human METTL3 (67733-1-Ig, Clone:2D8H1) and CoraLite®488-Conjugated Goat Anti-Mouse IgG(H+L) at dilution 1:1000 (red), or 0.4 ug Control Antibody. Cells were fixed and permeabilized with Transcription Factor Staining Buffer Kit (PF00011).