

RPL6 Monoclonal antibody, PBS Only

Catalog Number: 67729-1-PBS

Basic Information

Catalog Number:

67729-1-PBS

Size:

1 mg/ml

Source:

Mouse

Isotype:

IgG1

Immunogen Catalog Number:

AG6840

GenBank Accession Number:

BC004138

GeneID (NCBI):

6128

UNIPROT ID:

Q02878

Full Name:

ribosomal protein L6

Calculated MW:

33 kDa

Observed MW:

34 kDa

Purification Method:

Protein A purification

CloneNo.:

3F6F8

Applications

Tested Applications:

WB, IF, ELISA

Species Specificity:

Human, mouse, rat

Background Information

Ribosomes are large multiple protein complexes which is composed of more than 80 components and provide a protein-synthesizing machinery for all living cells. Ribosomal protein like 6 (RPL6, also called Taxreb107 for Tax responsive element binding protein 107), one of the ribosomal components, can bind with the Tax responsive element of human T cell leukemia virus (HTLV)-I in addition to be assembled to ribosomes [PMID:12031506]. Overexpressed in gastric cancer could promote cell growth and cell cycle progression at least through upregulating cyclin E expression [PMID:20171175].

Storage

Storage:

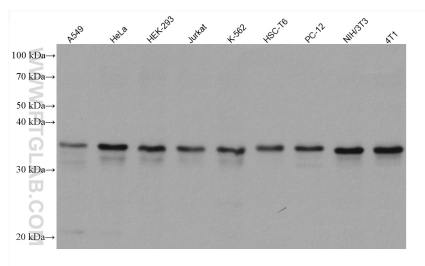
Store at -80°C.

The product is shipped with ice packs. Upon receipt, store it immediately at -80°C

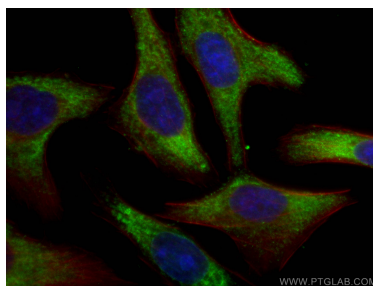
Storage Buffer:

PBS only

Selected Validation Data



Various lysates were subjected to SDS PAGE followed by western blot with 67729-1-Ig (RPL6 antibody) at dilution of 1:20000 incubated at room temperature for 1.5 hours. This data was developed using the same antibody clone with 67729-1-PBS in a different storage buffer formulation.



Immunofluorescent analysis of (-20°C Ethanol) fixed L02 cells using RPL6 antibody (67729-1-Ig, Clone: 3F6F8) at dilution of 1:400 and CoraLite®488-Conjugated AffiniPure Goat Anti-Mouse IgG(H+L), CL594-Phalloidin (red). This data was developed using the same antibody clone with 67729-1-PBS in a different storage buffer formulation.