

RPL6 Monoclonal antibody

Catalog Number: 67729-1-Ig

Basic Information

Catalog Number: 67729-1-Ig	GenBank Accession Number: BC004138	Purification Method: Antigen affinity purification
Size: 500 µg/ml	GeneID (NCBI): 6128	CloneNo.: 3F6F8
Source: Mouse	UNIPROT ID: Q02878	Recommended Dilutions: WB 1:5000-1:50000 IF/ICC 1:200-1:800
Isotype: IgG1	Full Name: ribosomal protein L6	
Immunogen Catalog Number: AG6840	Calculated MW: 33 kDa Observed MW: 34 kDa	

Applications

Tested Applications: IF/ICC, WB, ELISA	Positive Controls:
Species Specificity: Human, mouse, rat	WB : A549 cells, HeLa cells, HEK-293 cells, Jurkat cells, K-562 cells, HSC-T6 cells, PC-12 cells, NIH/3T3 cells, 4T1 cells IF/ICC : L02 cells,

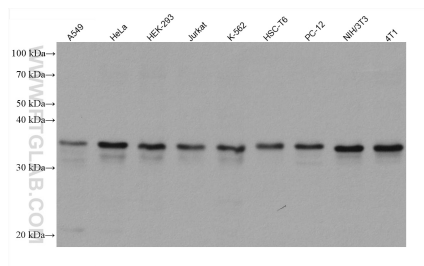
Background Information

Ribosomes are large multiple protein complexes which is composed of more than 80 components and provide a protein-synthesizing machinery for all living cells. Ribosomal protein like 6 (RPL6, also called Taxreb107 for Tax responsive element binding protein 107), one of the ribosomal components, can bind with the Tax responsive element of human T cell leukemia virus (HTLV)-I in addition to be assembled to ribosomes [PMID:12031506]. Overexpressed in gastric cancer could promote cell growth and cell cycle progression at least through upregulating cyclin E expression [PMID:20171175].

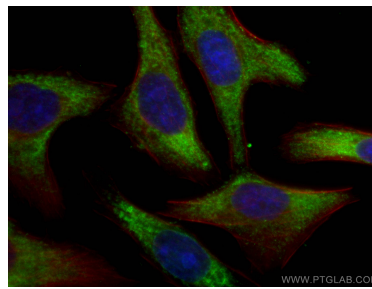
Storage

Storage:
Store at -20°C. Stable for one year after shipment.
Storage Buffer:
PBS with 0.02% sodium azide and 50% glycerol pH 7.3.
Aliquoting is unnecessary for -20°C storage

Selected Validation Data



Various lysates were subjected to SDS PAGE followed by western blot with 67729-1-Ig (RPL6 antibody) at dilution of 1:20000 incubated at room temperature for 1.5 hours.



Immunofluorescent analysis of (-20°C Ethanol) fixed L02 cells using RPL6 antibody (67729-1-Ig, Clone: 3F6F8) at dilution of 1:400 and CoraLite® 488-Conjugated AffiniPure Goat Anti-Mouse IgG(H+L), CL594-Phalloidin (red).