

For Research Use Only

# EIF3L Monoclonal antibody

Catalog Number: 67719-1-Ig



## Basic Information

Catalog Number:

67719-1-Ig

Size:

1000 µg/ml

Source:

Mouse

Isotype:

IgG2a

Immunogen Catalog Number:

AG26680

GenBank Accession Number:

BC007510

GeneID (NCBI):

51386

UNIPROT ID:

Q9Y262

Full Name:

eukaryotic translation initiation factor 3, subunit L

Calculated MW:

67 kDa

Observed MW:

67 kDa

Purification Method:

Protein A purification

CloneNo.:

1B11A10

Recommended Dilutions:

WB 1:2000-1:10000

IHC 1:50-1:500

IF 1:200-1:800

## Applications

Tested Applications:

WB, IF, ICC, IF-P, FC, IHC, ELISA

Species Specificity:

Human, Mouse, Rat

**Note-IHC: suggested antigen retrieval with TE buffer pH 9.0; (\*) Alternatively, antigen retrieval may be performed with citrate buffer pH 6.0**

Positive Controls:

WB: A549 cells, HeLa cells, HEK-293 cells, HepG2 cells, Jurkat cells, K-562 cells, HSC-T6 cells, NIH/3T3 cells, LNCaP cells, PC-12 cells, 4T1 cells

IHC: mouse pancreas tissue,

IF: mouse pancreas tissue, HeLa cells

## Background Information

### Storage

Storage:

Store at -20°C. Stable for one year after shipment.

Storage Buffer:

PBS with 0.02% sodium azide and 50% glycerol pH 7.3.

Aliquoting is unnecessary for -20°C storage

For technical support and original validation data for this product please contact:

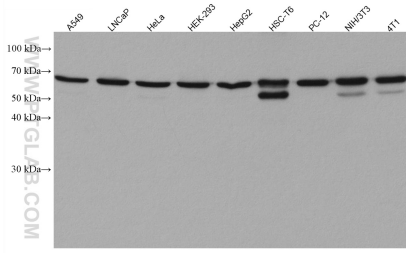
T: 4006900926

E: Proteintech-CN@ptglab.com

W: ptgcn.com

This product is exclusively available under Proteintech Group brand and is not available to purchase from any other manufacturer.

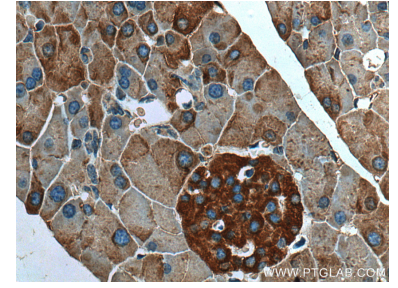
## Selected Validation Data



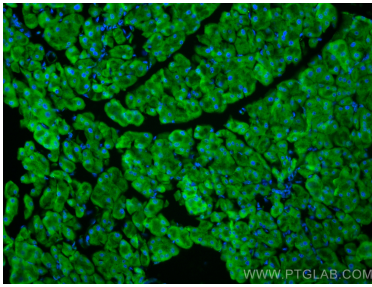
Various lysates were subjected to SDS PAGE followed by western blot with 67719-1-Ig (EIF3L antibody) at dilution of 1:5000 incubated at room temperature for 1.5 hours.



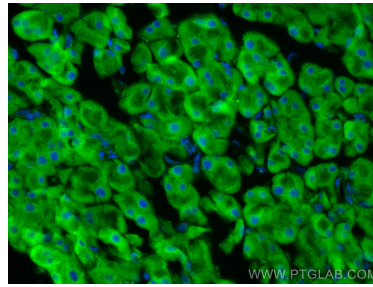
Immunohistochemical analysis of paraffin-embedded mouse pancreas tissue slide using 67719-1-Ig (EIF3L antibody) at dilution of 1:200 (under 10x lens). Heat mediated antigen retrieval with Tris-EDTA buffer (pH 9.0).



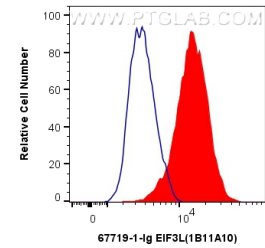
Immunohistochemical analysis of paraffin-embedded mouse pancreas tissue slide using 67719-1-Ig (EIF3L antibody) at dilution of 1:200 (under 40x lens). Heat mediated antigen retrieval with Tris-EDTA buffer (pH 9.0).



Immunofluorescent analysis of (4% PFA) fixed mouse pancreas tissue using EIF3L antibody (67719-1-Ig, Clone: 1B11A10) at dilution of 1:400 and CoraLite®488-Conjugated AffiniPure Goat Anti-Mouse IgG(H+L).



Immunofluorescent analysis of (4% PFA) fixed mouse pancreas tissue using EIF3L antibody (67719-1-Ig, Clone: 1B11A10) at dilution of 1:400 and CoraLite®488-Conjugated AffiniPure Goat Anti-Mouse IgG(H+L).



$1 \times 10^6$  HeLa cells were intracellularly stained with 0.4 ug Anti-Human EIF3L (67719-1-Ig, Clone: 1B11A10) and CoraLite®488-Conjugated AffiniPure Goat Anti-Mouse IgG(H+L) at dilution 1:1000 (red), or 0.4 ug Mouse IgG2a Isotype Control (C1.18.4) (65208-1-Ig, Clone: C1.18.4) (blue). Cells were fixed with 4% PFA and permeabilized with Flow Cytometry Perm Buffer (PF00011-C).