

For Research Use Only

# Laminin beta 1 Monoclonal antibody

Catalog Number: 67705-1-Ig



## Basic Information

|   |  |   |
|---|--|---|
| <b>Catalog Number:</b><br>67705-1-Ig        | <b>GenBank Accession Number:</b><br>BC113455 | <b>Purification Method:</b><br>Protein G purification |
| <b>Size:</b><br>1200 µg/ml                  | <b>GeneID (NCBI):</b><br>3912                | <b>CloneNo.:</b><br>1B8E9                             |
| <b>Source:</b><br>Mouse                     | <b>UNIPROT ID:</b><br>P07942                 | <b>Recommended Dilutions:</b><br>WB 1:2000-1:10000    |
| <b>Isotype:</b><br>IgG1                     | <b>Full Name:</b><br>laminin, beta 1         |   |
| <b>Immunogen Catalog Number:</b><br>AG19182 | <b>Calculated MW:</b><br>1786 aa, 198 kDa    |   |
|   | <b>Observed MW:</b><br>220-240 kDa           |   |

## Applications

|   |  |
|---|--|
| <b>Tested Applications:</b><br>WB, ELISA    | <b>Positive Controls:</b><br>WB : HEK-293 cells, NIH/3T3 cells, human placenta tissue, U2OS cells, A549 cells, HeLa cells, HepG2 cells |
| <b>Species Specificity:</b><br>Human, Mouse |  |

## Background Information

Laminins are a family of basement membrane glycoproteins composed of three nonidentical chains, laminin alpha, beta and gamma (formerly A, B1, and B2, respectively) (PMID: 7959779). Laminins contribute to the structure of extracellular matrix and influence the behavior of associated cells, such as adhesion, differentiation, migration, phenotype stability, and resistance to anoikis (PMID: 23057746). Laminin beta 1 (LAMB1) is expressed in most tissues that produce basement membranes, and is one of the 3 chains constituting laminin-1, the first laminin isolated from Engelbreth-Holm-Swarm (EHS) tumor. Laminin beta 1 is also a subunit of laminin-2 (laminin-211 or merosin), laminin-6 (laminin-311 or K-laminin), laminin-8 (laminin-411), laminin-10 (laminin-511) and laminin-12 (laminin-213).

## Storage

**Storage:**  
Store at -20°C.  
**Storage Buffer:**  
PBS with 0.02% sodium azide and 50% glycerol pH 7.3.  
Aliquoting is unnecessary for -20°C storage

For technical support and original validation data for this product please contact:

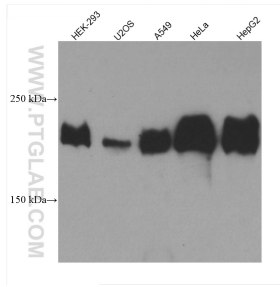
T: 4006900926

E: [Proteintech-CN@ptglab.com](mailto:Proteintech-CN@ptglab.com)

W: [ptgcn.com](http://ptgcn.com)

This product is exclusively available under Proteintech Group brand and is not available to purchase from any other manufacturer.

## Selected Validation Data



Various lysates were subjected to SDS PAGE followed by western blot with 67705-1-Ig (LAMB1 antibody) at dilution of 1:5000 incubated at room temperature for 1.5 hours.