

For Research Use Only

PPT1 Monoclonal antibody, PBS Only

Catalog Number: 67699-1-PBS

Featured Product



Basic Information

Catalog Number:

67699-1-PBS

Size:

1mg/ml

Source:

Mouse

Isotype:

IgG2a

Immunogen Catalog Number:

AG30550

GenBank Accession Number:

BC008426

GeneID (NCBI):

5538

UNIPROT ID:

P50897

Full Name:

palmitoyl-protein thioesterase 1

Calculated MW:

34 kDa

Observed MW:

32-34 kDa

Purification Method:

Protein A purification

CloneNo.:

1A1A3

Applications

Tested Applications:

WB, IF-P, Indirect ELISA

Species Specificity:

human, pig, rabbit

Background Information

The defective gene behind the INCL (infantile neuronal ceroid lipofuscinoses) disease, CLN1, encodes for palmitoyl protein thioesterase 1 (PPT1). It consists of 306 amino acids, including a signal sequence of 26 amino acids and three N-linked glycosylation sites. This protein exists with a molecular mass of 32 kDa, 34 kDa, 36 kDa, and 38 kDa. The enzyme is transported into lysosomes of non-neuronal cells by the mannose 6-phosphate receptor (M6PR) mediated pathway and a significant amount of native PPT1 resides in a complex rather than in a monomeric form (PMID:17565660).

Storage

Storage:

Store at -80°C.

The product is shipped with ice packs. Upon receipt, store it immediately at -80°C

Storage Buffer:

PBS Only

For technical support and original validation data for this product please contact:

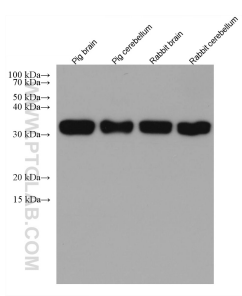
T: 4006900926

E: Proteintech-CN@ptglab.com

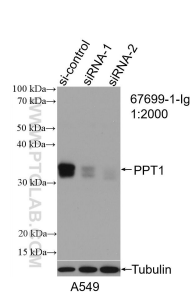
W: ptgcn.com

This product is exclusively available under Proteintech Group brand and is not available to purchase from any other manufacturer.

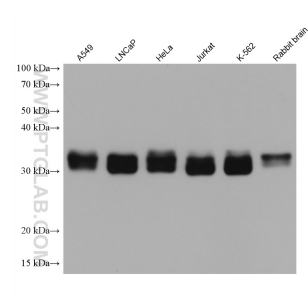
Selected Validation Data



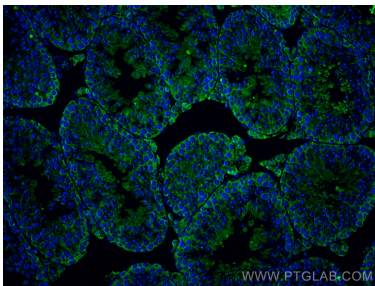
Various lysates were subjected to SDS PAGE followed by western blot with 67699-1-Ig (PPT1 antibody) at dilution of 1:5000 incubated at room temperature for 1.5 hours. This data was developed using the same antibody clone with 67699-1-PBS in a different storage buffer formulation.



WB result of PPT1 antibody (67699-1-Ig; 1:2000; incubated at room temperature for 1.5 hours) with sh-Control and sh-PPT1 transfected A549 cells. This data was developed using the same antibody clone with 67699-1-PBS in a different storage buffer formulation.



Various lysates were subjected to SDS PAGE followed by western blot with 67699-1-Ig (PPT1 antibody) at dilution of 1:5000 incubated at room temperature for 1.5 hours. This data was developed using the same antibody clone with 67699-1-PBS in a different storage buffer formulation.



Immunofluorescent analysis of (4% PFA) fixed paraffin-embedded mouse testis tissue using PPT1 antibody (67699-1-Ig, Clone: 1A1A3) at dilution of 1:400 and CoraLite®488-Conjugated AffiniPure Goat Anti-Mouse IgG(H+L) (SA00013-1). Heat mediated antigen retrieval with Tris-EDTA buffer (pH 9.0). This data was developed using the same antibody clone with 67699-1-PBS in a different storage buffer formulation.