

For Research Use Only

PPT1 Monoclonal antibody

Catalog Number: 67699-1-Ig **Featured Product**



Basic Information

Catalog Number: 67699-1-Ig	GenBank Accession Number: BC008426	Purification Method: Protein A purification
Size: 1000 ug/ml	GeneID (NCBI): 5538	CloneNo.: 1A1A3
Source: Mouse	UNIPROT ID: P50897	Recommended Dilutions: WB 1:2000-1:10000 IF-P 1:200-1:800
Isotype: IgG2a	Full Name: palmitoyl-protein thioesterase 1	
Immunogen Catalog Number: AG30550	Calculated MW: 34 kDa	
	Observed MW: 32-34 kDa	

Applications

Tested Applications: WB, IF-P, ELISA	Positive Controls:
Species Specificity: human, pig, rabbit	WB : A549 cells, pig heart tissue, pig brain tissue, LNCap cells, HeLa cells, Jurkat cells, K-562 cells, pig cerebellum tissue, rabbit brain tissue, rabbit cerebellum tissue
	IF-P : mouse testis tissue,

Background Information

The defective gene behind the INCL (infantile neuronal ceroid lipofuscinoses) disease, CLN1, encodes for palmitoyl protein thioesterase 1 (PPT1). It consists of 306 amino acids, including a signal sequence of 26 amino acids and three N-linked glycosylation sites. This protein exists with a molecular mass of 32 kDa, 34 kDa, 36 kDa, and 38 kDa. The enzyme is transported into lysosomes of non-neuronal cells by the mannose 6-phosphate receptor (M6PR) mediated pathway and a significant amount of native PPT1 resides in a complex rather than in a monomeric form (PMID:17565660).

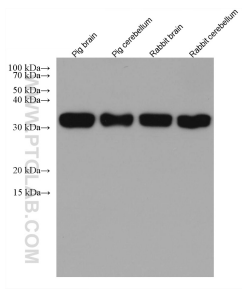
Storage

Storage:
Store at -20°C. Stable for one year after shipment.
Storage Buffer:
PBS with 0.02% sodium azide and 50% glycerol pH 7.3.
Aliquoting is unnecessary for -20°C storage

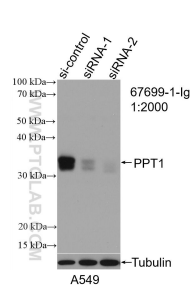
For technical support and original validation data for this product please contact:
T: 4006900926 E: Proteintech-CN@ptglab.com W: ptgcn.com

This product is exclusively available under Proteintech Group brand and is not available to purchase from any other manufacturer.

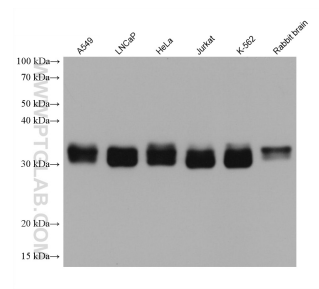
Selected Validation Data



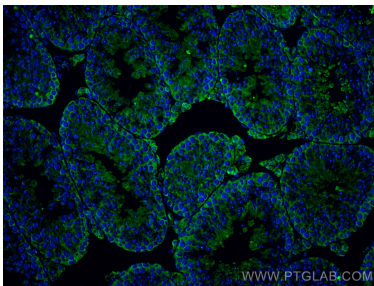
Various lysates were subjected to SDS PAGE followed by western blot with 67699-1-Ig (PPT1 antibody) at dilution of 1:5000 incubated at room temperature for 1.5 hours.



WB result of PPT1 antibody (67699-1-Ig; 1:2000; incubated at room temperature for 1.5 hours) with sh-Control and sh-PPT1 transfected A549 cells.



Various lysates were subjected to SDS PAGE followed by western blot with 67699-1-Ig (PPT1 antibody) at dilution of 1:5000 incubated at room temperature for 1.5 hours.



Immunofluorescent analysis of (4% PFA) fixed paraffin-embedded mouse testis tissue using PPT1 antibody (67699-1-Ig, Clone: 1A1A3) at dilution of 1:400 and CoraLite®488-Conjugated AffiniPure Goat Anti-Mouse IgG(H+L) (SA00013-1). Heat mediated antigen retrieval with Tris-EDTA buffer (pH 9.0).