

# YWHAZ Monoclonal antibody

Catalog Number: 67698-1-Ig

## Basic Information

**Catalog Number:**

67698-1-Ig

**Size:**

700 µg/ml

**Source:**

Mouse

**Isotype:**

IgM

**Immunogen Catalog Number:**

AG6667

**GenBank Accession Number:**

BC003623

**GeneID (NCBI):**

7534

**UNIPROT ID:**

P63104

**Full Name:**

tyrosine 3-monooxygenase/tryptophan 5-monooxygenase activation protein, zeta polypeptide

**Calculated MW:**

28 kDa

**Observed MW:**

28-30 kDa

**Purification Method:**

Caprylic acid/ammonium sulfate precipitation

**CloneNo.:**

3G12B10

**Recommended Dilutions:**

WB 1:5000-1:50000

IHC 1:200-1:800

IF/ICC 1:400-1:1600

## Applications

**Tested Applications:**

IF/ICC, IHC, WB, ELISA

**Species Specificity:**

Human, mouse, rat

**Note-IHC: suggested antigen retrieval with TE buffer pH 9.0; (\*) Alternatively, antigen retrieval may be performed with citrate buffer pH 6.0**

**Positive Controls:**

**WB:** A549 cells, HeLa cells, HEK-293 cells, Jurkat cells, K-562 cells, HSC-T6 cells, PC-12 cells, NIH3T3 cells, RAW 264.7 cells

**IHC:** human lung cancer tissue, human liver cancer tissue

**IF/ICC:** MCF-7 cells,

## Background Information

YWHAZ (also known as 14-3-3 zeta) is a member of 14-3-3 proteins which were the first phosphoserine/phosphothreonine-binding proteins to be discovered. 14-3-3 family members interact with a wide spectrum of proteins and possess diverse functions. Mammals express seven distinct 14-3-3 isoforms (gamma, epsilon, beta, zeta, sigma, theta, tau) that form multiple homo- and hetero- dimers. 14-3-3 proteins display the highest expression levels in the brain, and have been implicated in several neurodegenerative diseases, including Alzheimer's disease and amyotrophic lateral sclerosis.

## Storage

**Storage:**

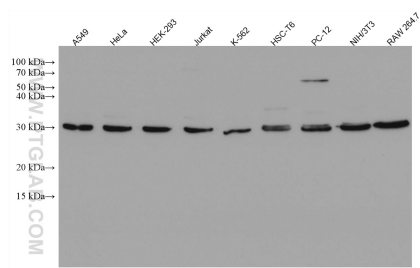
Store at -20°C. Stable for one year after shipment.

**Storage Buffer:**

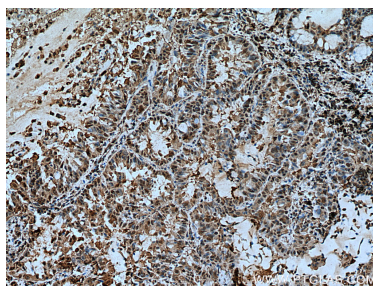
PBS with 0.02% sodium azide and 50% glycerol pH 7.3.

Aliquoting is unnecessary for -20°C storage

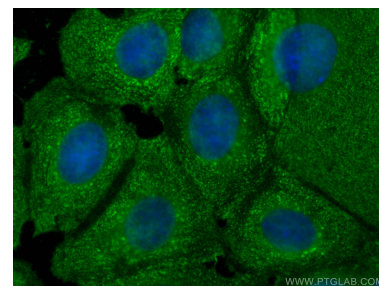
## Selected Validation Data



Various lysates were subjected to SDS PAGE followed by western blot with 67698-1-Ig (YWHAZ antibody) at dilution of 1:50000 incubated at room temperature for 1.5 hours.



Immunohistochemical analysis of paraffin-embedded human lung cancer tissue slide using 67698-1-Ig (YWHAZ antibody) at dilution of 1:400 (under 10x lens). Heat mediated antigen retrieval with Tris-EDTA buffer (pH 9.0).



Immunofluorescent analysis of (-20°C Methanol) fixed MCF-7 cells using YWHAZ antibody (67698-1-Ig, Clone: 3G12B10) at dilution of 1:800 and CoraLite®488-Conjugated AffiniPure Goat Anti-Mouse IgG(H+L).