

For Research Use Only

SNF8 Monoclonal antibody

Catalog Number: 67696-1-Ig **1 Publications**



Basic Information

Catalog Number: 67696-1-Ig	GenBank Accession Number: BC008976	Purification Method: Protein G purification
Size: 500 µg/ml	GeneID (NCBI): 11267	CloneNo.: 2C10F2
Source: Mouse	UNIPROT ID: Q96H20	Recommended Dilutions: WB 1:500-1:3000 IHC 1:50-1:500 IF 1:50-1:500
Isotype: IgG1	Full Name: SNF8, ESCRT-II complex subunit, homolog (S. cerevisiae)	
Immunogen Catalog Number: AG30384	Calculated MW: 258 aa, 29 kDa	
	Observed MW: 29 kDa	

Applications

Tested Applications: IF, IHC, WB, ELISA	Positive Controls: WB : HeLa cells, K-562 cells IHC : human breast cancer tissue, IF : HeLa cells,
Cited Applications: IF	
Species Specificity: Human	
Cited Species: human	
Note-IHC: suggested antigen retrieval with TE buffer pH 9.0; (*) Alternatively, antigen retrieval may be performed with citrate buffer pH 6.0	

Background Information

Notable Publications

Author	Pubmed ID	Journal	Application
Takashi Nozawa	37802980	Nat Commun	IF

Storage

Storage:
Store at -20°C.
Storage Buffer:
PBS with 0.02% sodium azide and 50% glycerol pH 7.3.
Aliquoting is unnecessary for -20°C storage

For technical support and original validation data for this product please contact:

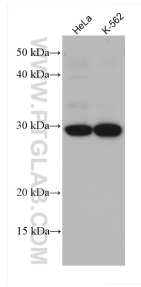
T: 4006900926

E: Proteintech-CN@ptglab.com

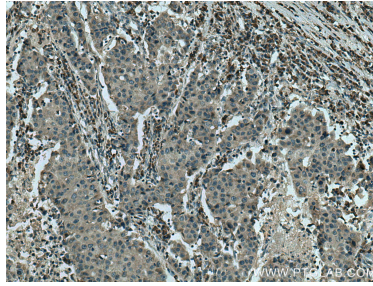
W: ptgcn.com

This product is exclusively available under Proteintech Group brand and is not available to purchase from any other manufacturer.

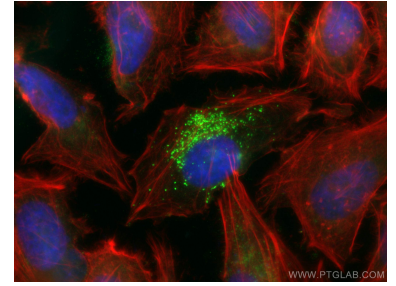
Selected Validation Data



Various lysates were subjected to SDS PAGE followed by western blot with 67696-1-Ig (SNF8 antibody) at dilution of 1:1500 incubated at room temperature for 1.5 hours.



Immunohistochemical analysis of paraffin-embedded human breast cancer tissue slide using 67696-1-Ig (SNF8 antibody) at dilution of 1:200 (under 10x lens). Heat mediated antigen retrieval with Tris-EDTA buffer (pH 9.0).



Immunofluorescent analysis of (4% PFA) fixed HeLa cells using SNF8 antibody (67696-1-Ig, Clone: 2C10F2) at dilution of 1:200 and CoraLite@488-Conjugated AffiniPure Goat Anti-Mouse IgG(H+L), CL594-Phalloidin (red).