

ASL Monoclonal antibody

Catalog Number: 67692-1-Ig 1 Publications

Basic Information

Catalog Number:

67692-1-Ig

Size:

1000 µg/ml

Source:

Mouse

Isotype:

IgG2b

Immunogen Catalog Number:

AG30517

GenBank Accession Number:

BC008195

GeneID (NCBI):

435

UNIPROT ID:

P04424

Full Name:

argininosuccinate lyase

Calculated MW:

55 kDa

Observed MW:

50 kDa

Purification Method:

Protein A purification

CloneNo.:

1G9H3

Recommended Dilutions:

WB 1:5000-1:50000

Applications

Tested Applications:

WB, ELISA

Cited Applications:

WB

Species Specificity:

Human, mouse, rat, pig

Cited Species:

mouse

Positive Controls:

WB : pig kidney tissue, LNCaP cells, K-562 cells, rat kidney tissue, mouse kidney tissue, pig liver tissue, rat liver tissue, mouse liver tissue

Background Information

Argininosuccinate lyase (ASL), one of the significant UC enzymes, catalyzes argininosuccinate cleavage to generate arginine and fumarate. Arginine is then catalyzed by arginase to ornithine and polyamines, which are found to promote cancer cell proliferation and growth. Importantly, ASL ectopic expression is closely associated with poor prognosis of colorectal cancer, hepatocellular. ASL is a member of the aspartase/fumarase superfamily. Enzymes of this superfamily share similar tetrameric structure and active site, though the sequence identities between different members are quite low (less than 20%). Members of this superfamily have been recognised as drug targets for microbial infections. ASL is a 464-amino-acid enzyme with a molecular mass of 49.7 kDa. (PMID: 22386318 PMID: 31018905)

Notable Publications

Author	Pubmed ID	Journal	Application
Nneka Southwell	37222423	EMBO Mol Med	WB

Storage

Storage:

Store at -20°C.

Storage Buffer:

PBS with 0.02% sodium azide and 50% glycerol pH 7.3.

Aliquoting is unnecessary for -20°C storage

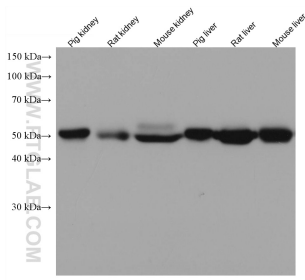
For technical support and original validation data for this product please contact:

T: 4006900926

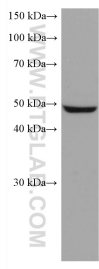
E: Proteintech-CN@ptglab.comW: ptgcn.com

This product is exclusively available under Proteintech Group brand and is not available to purchase from any other manufacturer.

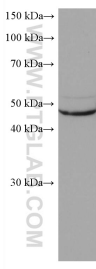
Selected Validation Data



Various lysates were subjected to SDS PAGE followed by western blot with 67692-1-Ig (ASL antibody) at dilution of 1:20000 incubated at room temperature for 1.5 hours.



LNCaP cells were subjected to SDS PAGE followed by western blot with 67692-1-Ig (ASL antibody) at dilution of 1:20000 incubated at room temperature for 1.5 hours.



K-562 cells were subjected to SDS PAGE followed by western blot with 67692-1-Ig (ASL antibody) at dilution of 1:20000 incubated at room temperature for 1.5 hours.