

For Research Use Only

# NDUFB8 Monoclonal antibody, PBS Only (Capture)

Catalog Number: 67690-1-PBS

Featured Product



## Basic Information

Catalog Number:

67690-1-PBS

Concentration:

1000 µg/ml

Source:

Mouse

Isotype:

IgG1

Immunogen Catalog Number:

AG6569

GenBank Accession Number:

BC000466

GeneID (NCBI):

4714

UNIPROT ID:

O95169

Full Name:

NADH dehydrogenase (ubiquinone) 1  
beta subcomplex, 8, 19kDa

Calculated MW:

22 kDa

Observed MW:

18-22 kDa

Purification Method:

Protein A purification

CloneNo.:

3B12C6

## Applications

Tested Applications:

WB, IHC, Cytometric bead array, Indirect ELISA

Species Specificity:

human, mouse, rat, pig, rabbit

## Background Information

### Storage

Storage:

Store at -80°C.

The product is shipped with ice packs. Upon receipt, store it immediately at -80°C

Storage Buffer:

PBS Only

For technical support and original validation data for this product please contact:

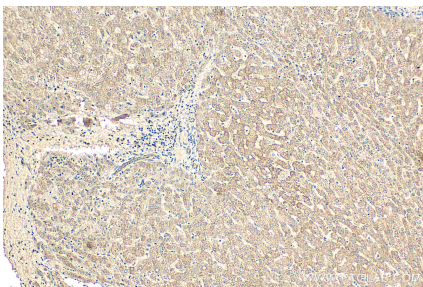
T: 4006900926

E: [Proteintech-CN@ptglab.com](mailto:Proteintech-CN@ptglab.com)

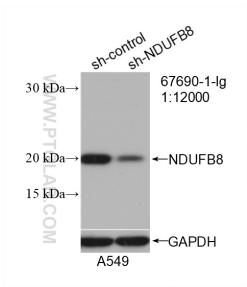
W: [ptgcn.com](http://ptgcn.com)

This product is exclusively available under Proteintech Group brand and is not available to purchase from any other manufacturer.

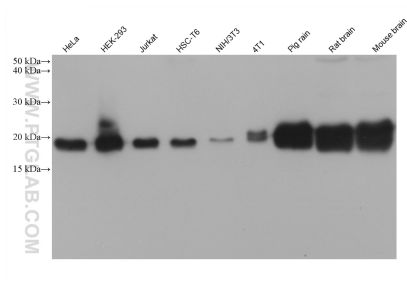
Selected Validation Data



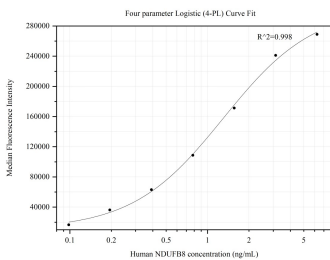
Immunohistochemical analysis of paraffin-embedded human liver tissue slide using 67690-1-Ig (NDUFB8 antibody) at dilution of 1:1000 (under 10x lens). Heat mediated antigen retrieval with Tris-EDTA buffer (pH 9.0). This data was developed using the same antibody clone with 67690-1-PBS in a different storage buffer formulation.



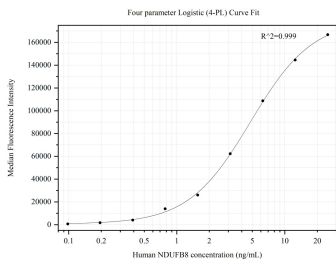
WB result of NDUFB8 antibody (67690-1-Ig; 1:12000; incubated at room temperature for 1.5 hours) with sh-Control and sh-NDUFB8 transfected A549 cells. This data was developed using the same antibody clone with 67690-1-PBS in a different storage buffer formulation.



Various lysates were subjected to SDS PAGE followed by western blot with 67690-1-Ig (NDUFB8 antibody) at dilution of 1:20000 incubated at room temperature for 1.5 hours. This data was developed using the same antibody clone with 67690-1-PBS in a different storage buffer formulation.



Cytometric bead array standard curve of MP50307-1, NDUFB8 Monoclonal Matched Antibody Pair, PBS Only. Capture antibody: 67690-1-PBS. Detection antibody: 67690-2-PBS. Standard:Ag6569. Range: 0.098-6.25 ng/mL.



Cytometric bead array standard curve of MP50307-2, NDUFB8 Monoclonal Matched Antibody Pair, PBS Only. Capture antibody: 67690-1-PBS. Detection antibody: 67690-3-PBS. Standard:Ag6569. Range: 0.098-25 ng/mL.