

For Research Use Only

# ALPK1 Monoclonal antibody, PBS Only

Catalog Number: 67689-1-PBS



## Basic Information

Catalog Number:

67689-1-PBS

Size:

1mg/ml

Source:

Mouse

Isotype:

IgG1

Immunogen Catalog Number:

AG5320

GenBank Accession Number:

BC060780

GeneID (NCBI):

80216

UNIPROT ID:

Q96QP1

Full Name:

alpha-kinase 1

Calculated MW:

139 kDa

Observed MW:

139 kDa

Purification Method:

Protein A purification

CloneNo.:

2B8B5

## Applications

Tested Applications:

WB, IHC, IF/ICC, Indirect ELISA

Species Specificity:

human

## Background Information

Alpha-protein kinase 1, also known as alpha-kinase 1 (ALPK1), is associated with chronic kidney disease (CKD), myocardial infarction, gout and type 2 diabetes mellitus (DM). ALPK1 mutant has been reported to cause severe defects in motor coordination in mice. ALPK1 enhances the expression of proinflammatory cytokines including IL-1 $\beta$ , IL-8 and TGF- $\beta$  1 in cultured human THP1 and human embryonic kidney 293 (HEK293) cells (PMID: 31557402, PMID: 26275947). ALPK1 short isoform (108 kDa) was highly expressed in brain, spinal cord, heart, lung, spleen, thymus, small intestine, skin and testis, while detectable in skeletal muscle and kidney. ALPK1 large isoform (130 kDa) appeared in heart, lung, thymus and skin (PMID: 21208416).

## Storage

Storage:

Store at -80°C.

The product is shipped with ice packs. Upon receipt, store it immediately at -80°C

Storage Buffer:

PBS Only

For technical support and original validation data for this product please contact:

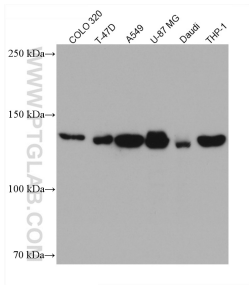
T: 4006900926

E: [Proteintech-CN@ptglab.com](mailto:Proteintech-CN@ptglab.com)

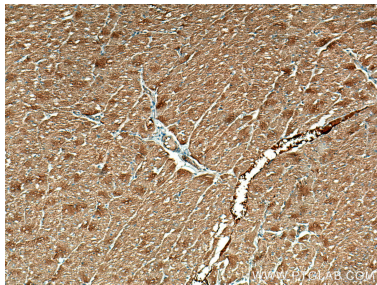
W: [ptgcn.com](http://ptgcn.com)

This product is exclusively available under Proteintech Group brand and is not available to purchase from any other manufacturer.

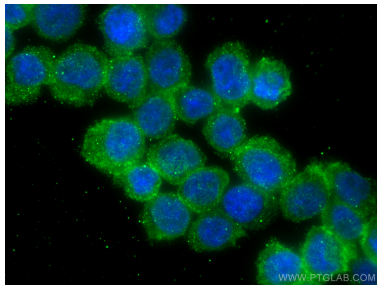
## Selected Validation Data



Various lysates were subjected to SDS PAGE followed by western blot with 67689-1-Ig (ALPK1 antibody) at dilution of 1:5000 incubated at room temperature for 1.5 hours. This data was developed using the same antibody clone with 67689-1-PBS in a different storage buffer formulation.



Immunohistochemical analysis of paraffin-embedded human heart tissue slide using 67689-1-Ig (ALPK1 antibody) at dilution of 1:500 (under 10x lens). Heat mediated antigen retrieval with Tris-EDTA buffer (pH 9.0). This data was developed using the same antibody clone with 67689-1-PBS in a different storage buffer formulation.



Immunofluorescent analysis of (4% PFA) fixed THP-1 cells using ALPK1 antibody (67689-1-Ig, Clone: 2B885 ) at dilution of 1:400 and CoraLite®488-Conjugated AffiniPure Goat Anti-Mouse IgG(H+L) (SA00013-1). This data was developed using the same antibody clone with 67689-1-PBS in a different storage buffer formulation.