

For Research Use Only

cyclin B1 Monoclonal antibody, PBS Only

Catalog Number: 67686-1-PBS

Featured Product



Basic Information

Catalog Number:

67686-1-PBS

Size:

5547 ug/ml

Source:

Mouse

Isotype:

IgG1

Immunogen Catalog Number:

AG29444

GenBank Accession Number:

BC006510

GeneID (NCBI):

891

UNIPROT ID:

P14635

Full Name:

cyclin B1

Calculated MW:

48 kDa

Observed MW:

55 kDa

Purification Method:

Protein A purification

CloneNo.:

1F3G11

Applications

Tested Applications:

WB, IHC, IF/ICC, FC (Intra), ELISA

Species Specificity:

human, mouse, rat

Background Information

Cyclin B1 is a regulatory protein involved in mitosis. The gene product complexes with p34(cdc2) to form the maturation-promoting factor (MPF). Two alternative transcripts have been found, a constitutively expressed transcript and a cell cycle-regulated transcript, that is expressed predominantly during G2/M phase of the cell cycle. The different transcripts result from the use of alternate transcription initiation sites. The antibody is specific to CCNB1. We got a 55-60 kDa band in western blotting maybe due to phosphorylation.

Storage

Storage:

Store at -80°C.

The product is shipped with ice packs. Upon receipt, store it immediately at -80°C

Storage Buffer:

PBS Only

For technical support and original validation data for this product please contact:

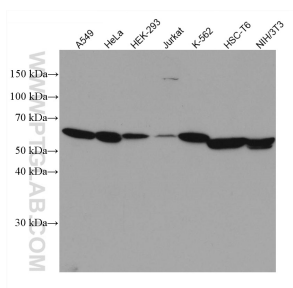
T: 4006900926

E: Proteintech-CN@ptglab.com

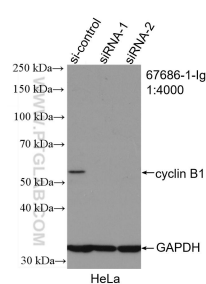
W: ptgcn.com

This product is exclusively available under Proteintech Group brand and is not available to purchase from any other manufacturer.

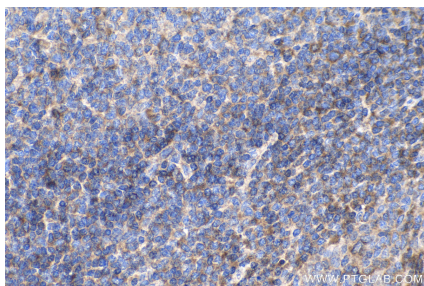
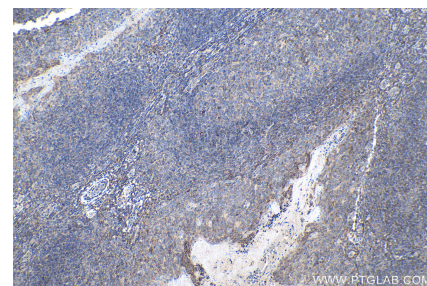
Selected Validation Data



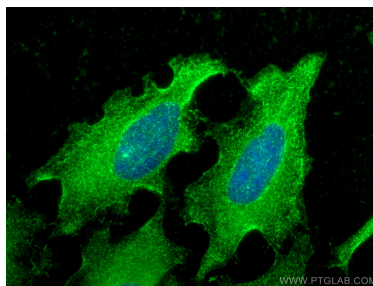
Various lysates were subjected to SDS PAGE followed by western blot with 67686-1-Ig (cyclin B1 antibody) at dilution of 1:4000 incubated at room temperature for 1.5 hours. This data was developed using the same antibody clone with 67686-1-PBS in a different storage buffer formulation.



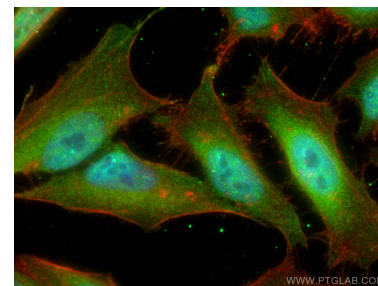
WB result of cyclin B1 antibody (67686-1-Ig; 1:3200; incubated at room temperature for 1.5 hours) with sh-Control and sh-cyclin B1 transfected HeLa cells. This data was developed using the same antibody clone with 67686-1-PBS in a different storage buffer formulation.



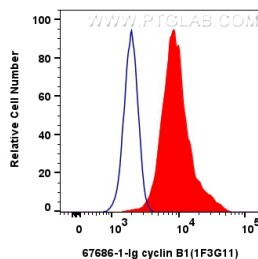
Immunohistochemical analysis of paraffin-embedded human tonsillitis tissue slide using 67686-1-Ig (cyclin B1 antibody) at dilution of 1:1600 (under 40x lens). Heat mediated antigen retrieval with Tris-EDTA buffer (pH 9.0). This data was developed using the same antibody clone with 67686-1-PBS in a different storage buffer formulation.



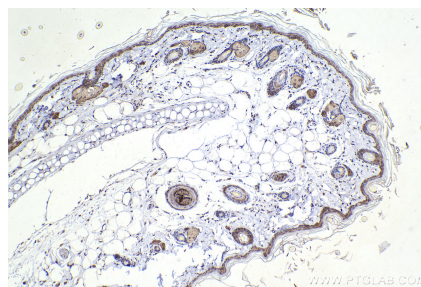
Immunofluorescent analysis of (-20°C Ethanol) fixed HeLa cells using cyclin B1 antibody (67686-1-Ig, Clone: 1F3G11) at dilution of 1:300 and Coralite®488-Conjugated AffiniPure Goat Anti-Mouse IgG(H+L). This data was developed using the same antibody clone with 67686-1-PBS in a different storage buffer formulation.



Immunofluorescent analysis of (4% PFA) fixed HeLa cells using cyclin B1 antibody (67686-1-Ig, Clone: 1F3G11) at dilution of 1:650 and Coralite®488-Conjugated AffiniPure Goat Anti-Mouse IgG(H+L), CL594-Phalloidin (red). This data was developed using the same antibody clone with 67686-1-PBS in a different storage buffer formulation.



1x10⁶ HeLa cells were intracellularly stained with 0.4 ug cyclin B1 Monoclonal antibody (67686-1-Ig, Clone: 1F3G11)(red), or 0.4 ug Mouse IgG1 Isotype Control (MOPC-21) (65124-1-Ig, Clone: MOPC-21) (blue). Cells were fixed with 4% PFA and permeabilized with Flow Cytometry Perm Buffer (PF00011-C). This data was developed using the same antibody clone with 67686-1-PBS in a different storage buffer formulation.



Immunohistochemical analysis of paraffin-embedded rat skin tissue slide using 67686-1-Ig (cyclin B1 antibody) at dilution of 1:1000 (under 10x lens). Heat mediated antigen retrieval with Tris-EDTA buffer (pH 9.0). This data was developed using the same antibody clone with 67686-1-PBS in a different storage buffer formulation.