

Ins1 Monoclonal antibody

Catalog Number: 67668-1-Ig

Basic Information

Catalog Number:	67668-1-Ig	GenBank Accession Number:	NM_008386	Purification Method:	Protein A purification
Size:	1000 ug/ml	GeneID (NCBI):	16333	CloneNo.:	1H2C11
Source:	Mouse	UNIPROT ID:	P01325	Recommended Dilutions:	IHC 1:2500-1:10000 IF-P 1:50-1:500
Isotype:	IgG1	Full Name:	insulin I		
Immunogen Catalog Number:	AG29988	Calculated MW:	12 kDa		

Applications

Tested Applications:	IHC, IF-P, ELISA	Positive Controls:	
Species Specificity:	mouse, rat	IHC :	mouse pancreas tissue, rat pancreas tissue
		IF-P :	mouse pancreas tissue,

Note-IHC: suggested antigen retrieval with TE buffer pH 9.0; (*) Alternatively, antigen retrieval may be performed with citrate buffer pH 6.0

Background Information

insulin I is a peptide hormone that plays a vital role in the regulation of carbohydrate and lipid metabolism. The encoded precursor protein undergoes proteolytic cleavage to produce a disulfide-linked heterodimeric functional protein that is stored in secretory granules. An increase in blood glucose levels, among others, induces the release of insulin from the secretory granules. Mice deficient in the functional hormone encoded by this gene develop diabetes mellitus.

Storage

Storage:
Store at -20°C. Stable for one year after shipment.
Storage Buffer:
PBS with 0.02% sodium azide and 50% glycerol pH 7.3.
Aliquoting is unnecessary for -20°C storage

For technical support and original validation data for this product please contact:

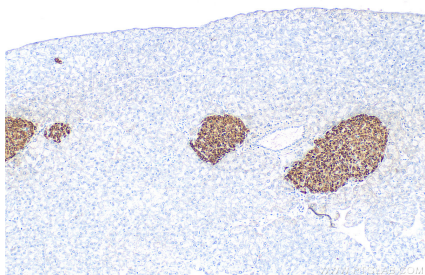
T: 4006900926

E: Proteintech-CN@ptglab.com

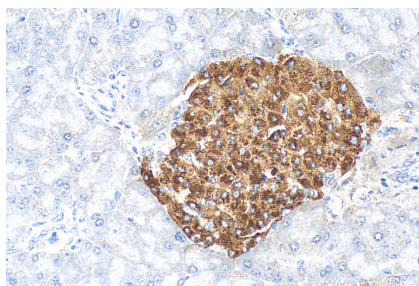
W: ptgcn.com

This product is exclusively available under Proteintech Group brand and is not available to purchase from any other manufacturer.

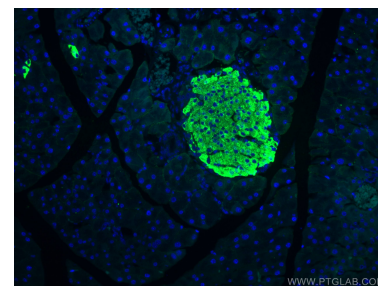
Selected Validation Data



Immunohistochemical analysis of paraffin-embedded mouse pancreas tissue slide using 67668-1-Ig (Ins1 antibody) at dilution of 1:5000 (under 10x lens). Heat mediated antigen retrieval with Tris-EDTA buffer (pH 9.0).



Immunohistochemical analysis of paraffin-embedded mouse pancreas tissue slide using 67668-1-Ig (Ins1 antibody) at dilution of 1:5000 (under 40x lens). Heat mediated antigen retrieval with Tris-EDTA buffer (pH 9.0).



Immunofluorescent analysis of (4% PFA) fixed mouse pancreas tissue using Ins1 antibody (67668-1-Ig, Clone: 1H2C11) at dilution of 1:200 and CoraLite®488-Conjugated AffiniPure Goat Anti-Mouse IgG(H+L).