

# ETFA Monoclonal antibody

Catalog Number: 67661-1-Ig

## Basic Information

<b>Catalog Number:</b> 67661-1-Ig	<b>GenBank Accession Number:</b> BC015526	<b>Purification Method:</b> Protein A purification
<b>Concentration:</b> 852 ug/ml	<b>GeneID (NCBI):</b> 2108	<b>CloneNo.:</b> 3C12G5
<b>Source:</b> Mouse	<b>UNIPROT ID:</b> P13804	<b>Recommended Dilutions:</b> WB 1:5000-1:50000 IHC 1:8000-1:32000 IF/ICC 1:200-1:800
<b>Isotype:</b> IgG2a	<b>Full Name:</b> electron-transfer-flavoprotein, alpha polypeptide	
<b>Immunogen Catalog Number:</b> AG30257	<b>Calculated MW:</b> 30 kDa	
	<b>Observed MW:</b> 30 kDa	

## Applications

**Tested Applications:**  
WB, IHC, IF/ICC, ELISA

**Species Specificity:**  
human, mouse, rat, pig

**Note-IHC: suggested antigen retrieval with TE buffer pH 9.0; (\*) Alternatively, antigen retrieval may be performed with citrate buffer pH 6.0**

**Positive Controls:**

**WB :** HCT 116 cells, LNCaP cells, mouse brain tissue, HuH-7 cells, HeLa cells, K-562 cells, pig liver tissue, rat liver tissue

**IHC :** human liver cancer tissue,

**IF/ICC :** HepG2 cells,

## Background Information

The electron transfer flavoprotein(ETF), located in the mitochondrial matrix, is a nuclear-encoded enzyme delivering to the respiratory chain by straight-chain acyl-CoA dehydrogenases and other dehydrogenases. Mitochondrial fatty acids oxidation and amino acids metabolism are affected in MADD(Multiple acyl-CoA dehydrogenase deficiency). These disorders are linked to a dysfunction of ETF. ETF is a mitochondrial matrix protein consisting of alpha- (30kDa) and beta- (28kDa) subunits encoded by the ETFA and ETFB genes, respectively. (PMID: 31996215, PMID: 16510302)

## Storage

**Storage:**

Store at -20°C. Stable for one year after shipment.

**Storage Buffer:**

PBS with 0.02% sodium azide and 50% glycerol, pH7.3

**Aliquoting is unnecessary for -20°C storage**

For technical support and original validation data for this product please contact:

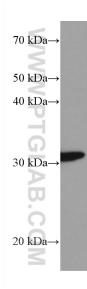
T: 4006900926

E: [Proteintech-CN@ptglab.com](mailto:Proteintech-CN@ptglab.com)

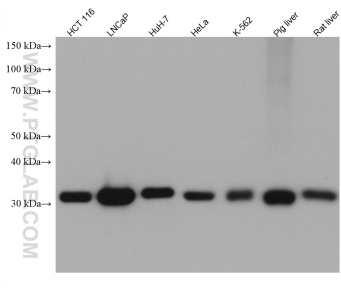
W: [ptgcn.com](http://ptgcn.com)

**This product is exclusively available under Proteintech Group brand and is not available to purchase from any other manufacturer.**

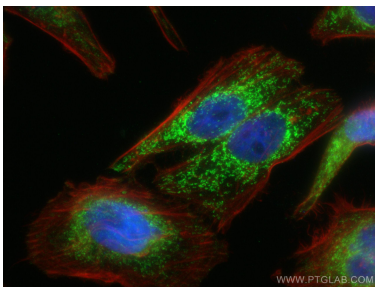
Selected Validation Data



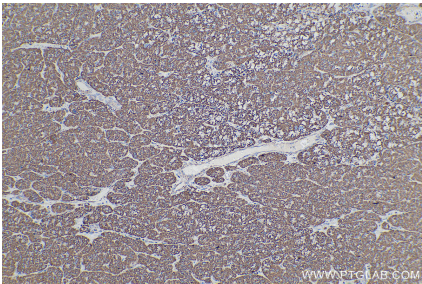
mouse brain tissue were subjected to SDS PAGE followed by western blot with 67661-1-Ig (ETFA antibody) at dilution of 1:10000 incubated at room temperature for 1.5 hours.



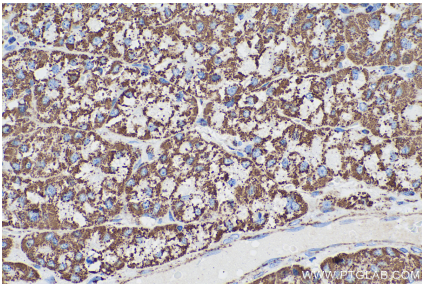
Various lysates were subjected to SDS PAGE followed by western blot with 67661-1-Ig (ETFA antibody) at dilution of 1:10000 incubated at room temperature for 1.5 hours.



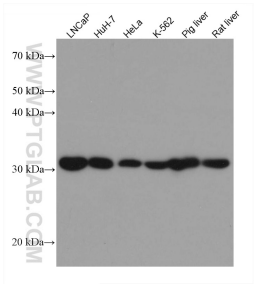
Immunofluorescent analysis of (4% PFA) fixed HepG2 cells using ETFA antibody (67661-1-Ig, Clone: 3C12G5 ) at dilution of 1:400 and CoraLite®488-Conjugated AffiniPure Goat Anti-Mouse IgG(H+L), CL594-Phalloidin (red). DAPI (blue).



Immunohistochemical analysis of paraffin-embedded human liver cancer tissue slide using 67661-1-Ig (ETFA antibody) at dilution of 1:16000 (under 10x lens). Heat mediated antigen retrieval with Tris-EDTA buffer (pH 9.0).



Immunohistochemical analysis of paraffin-embedded human liver cancer tissue slide using 67661-1-Ig (ETFA antibody) at dilution of 1:16000 (under 40x lens). Heat mediated antigen retrieval with Tris-EDTA buffer (pH 9.0).



Various lysates were subjected to SDS PAGE followed by western blot with 67661-1-Ig (ETFA antibody) at dilution of 1:10000 incubated at room temperature for 1.5 hours.