

For Research Use Only

# PPM1B Monoclonal antibody

Catalog Number: 67647-1-Ig



## Basic Information

|  |   |  |
|--|---|--|
| <b>Catalog Number:</b><br>67647-1-Ig       | <b>GenBank Accession Number:</b><br>BC012002  | <b>Purification Method:</b><br>Protein G purification                  |
| <b>Size:</b><br>1600 µg/ml                 | <b>GeneID (NCBI):</b><br>5495   | <b>CloneNo.:</b><br>2C7H2  |
| <b>Source:</b><br>Mouse                    | <b>UNIPROT ID:</b><br>O75688  | <b>Recommended Dilutions:</b><br>WB 1:5000-1:50000<br>IHC 1:500-1:2000 |
| <b>Isotype:</b><br>IgG1                    | <b>Full Name:</b><br>protein phosphatase 1B (formerly 2C),<br>magnesium-dependent, beta isoform |  |
| <b>Immunogen Catalog Number:</b><br>AG3871 | <b>Calculated MW:</b><br>479 aa, 53 kDa   |  |
|  | <b>Observed MW:</b><br>36, 53 kDa   |  |

## Applications

### Tested Applications:

IHC, WB, ELISA

### Species Specificity:

Human, mouse, rat

**Note-IHC: suggested antigen retrieval with TE buffer pH 9.0; (\*) Alternatively, antigen retrieval may be performed with citrate buffer pH 6.0**

### Positive Controls:

**WB** : HeLa cells, HEK-293 cells, HepG2 cells, Jurkat cells, K-562 cells, HSC-T6 cells, NIH/3T3 cells

**IHC** : human breast cancer tissue, mouse skeletal muscle tissue

## Background Information

PPM1B can identify 4 isoforms with the WM of 36-55 kDa.

## Storage

### Storage:

Store at -20°C. Stable for one year after shipment.

### Storage Buffer:

PBS with 0.02% sodium azide and 50% glycerol pH 7.3.

Aliquoting is unnecessary for -20°C storage

For technical support and original validation data for this product please contact:

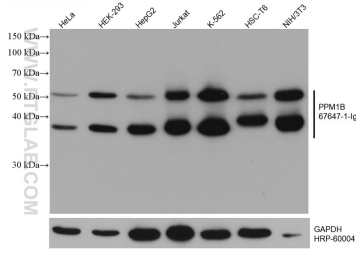
T: 4006900926

E: [Proteintech-CN@ptglab.com](mailto:Proteintech-CN@ptglab.com)

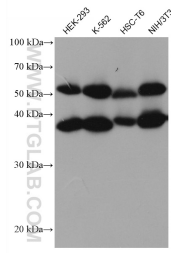
W: [ptgcn.com](http://ptgcn.com)

**This product is exclusively available under Proteintech Group brand and is not available to purchase from any other manufacturer.**

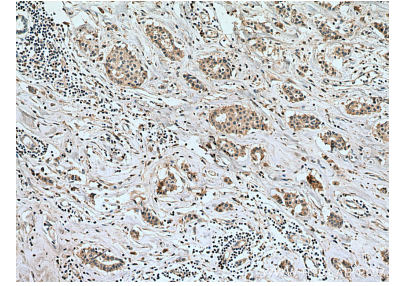
## Selected Validation Data



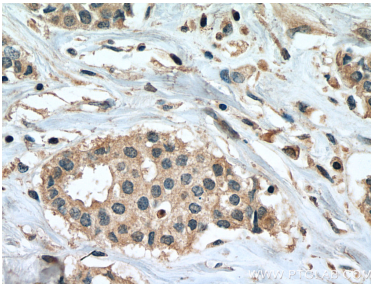
Various lysates were subjected to SDS PAGE followed by western blot with 67647-1-Ig (PPM1B antibody) at dilution of 1:10000 incubated at room temperature for 1.5 hours. The membrane was stripped and reblotted with HRP-conjugated GAPDH Monoclonal antibody (HRP-60004) as loading control.



Various lysates were subjected to SDS PAGE followed by western blot with 67647-1-Ig (PPM1B antibody) at dilution of 1:10000 incubated at room temperature for 1.5 hours.



Immunohistochemical analysis of paraffin-embedded human breast cancer tissue slide using 67647-1-Ig (PPM1B antibody) at dilution of 1:1000 (under 10x lens). Heat mediated antigen retrieval with Tris-EDTA buffer (pH 9.0).



Immunohistochemical analysis of paraffin-embedded human breast cancer tissue slide using 67647-1-Ig (PPM1B antibody) at dilution of 1:1000 (under 40x lens). Heat mediated antigen retrieval with Tris-EDTA buffer (pH 9.0).