

EXOSC9 Monoclonal antibody

Catalog Number: 67636-1-Ig

Featured Product

Basic Information

Catalog Number:

67636-1-Ig

Size:

1800 µg/ml

Source:

Mouse

Isotype:

IgG2a

Immunogen Catalog Number:

AG19783

GenBank Accession Number:

BC142978

GeneID (NCBI):

5393

UNIPROT ID:

Q06265

Full Name:

exosome component 9

Calculated MW:

456 aa, 51 kDa

Observed MW:

65-70 kDa

Purification Method:

Protein A purification

CloneNo.:

3F4G1

Recommended Dilutions:

WB 1:5000-1:50000

IHC 1:750-1:3000

IF/ICC 1:1000-1:4000

Applications

Tested Applications:

IF/ICC, IHC, WB, ELISA

Species Specificity:

Human, Mouse, Rat

Note-IHC: suggested antigen retrieval with TE buffer pH 9.0; (*) Alternatively, antigen retrieval may be performed with citrate buffer pH 6.0

Positive Controls:

WB : U2OS cells, HeLa cells, A549 cells, MCF-7 cells, HepG2 cells, K-562 cells, Jurkat cells, HSC-T6 cells, NIH/3T3 cells

IHC : human breast cancer tissue, mouse kidney tissue, rat kidney tissue

IF/ICC : HeLa cells,

Background Information

EXOSC9, also named as PMSCL1 and PM/Scl-75, is a key subunit of the exosome complex. EXOSC9 maintains self-renewal in a cell-autonomous manner. EXOSC9 has 4 isoforms with MW 49 kDa, 51 kDa, 39 kDa and 41 kDa. It's polymyositis/scleroderma auto-antigen 75 kDa. The MW of EXOSC9 is migrated to 60-75 kDa for modification in WB detection.

Storage

Storage:

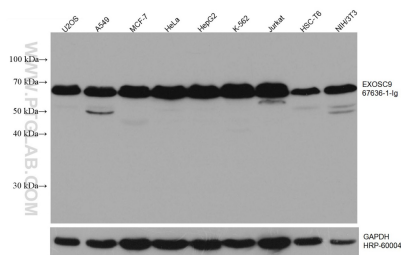
Store at -20°C. Stable for one year after shipment.

Storage Buffer:

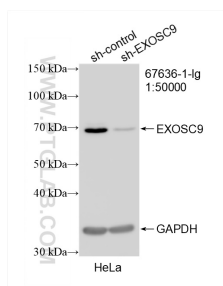
PBS with 0.02% sodium azide and 50% glycerol pH 7.3.

Aliquoting is unnecessary for -20°C storage

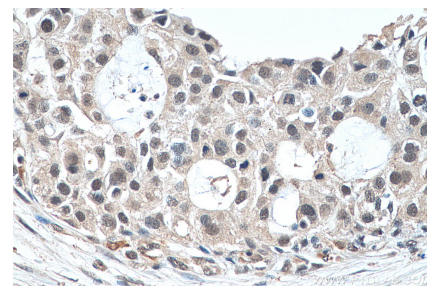
Selected Validation Data



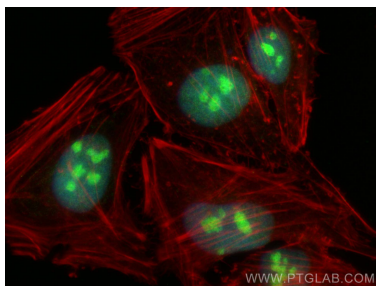
Various lysates were subjected to SDS PAGE followed by western blot with 67636-1-Ig (EXOSC9 antibody) at dilution of 1:20000 incubated at room temperature for 1.5 hours. The membrane was stripped and reblotted with HRP-conjugated GAPDH Monoclonal antibody (HRP-60004) as loading control.



WB result of EXOSC9 antibody (67636-1-Ig; 1:50000; incubated at room temperature for 1.5 hours) with sh-Control and sh-EXOSC9 transfected HeLa cells.



Immunohistochemical analysis of paraffin-embedded human breast cancer tissue slide using 67636-1-Ig (EXOSC9 antibody) at dilution of 1:1500 (under 40x lens). Heat mediated antigen retrieval with Tris-EDTA buffer (pH 9.0).



Immunofluorescent analysis of (4% PFA) fixed HeLa cells using EXOSC9 antibody (67636-1-Ig, Clone: 3F4G1) at dilution of 1:2000 and CoraLite®488-Conjugated AffiniPure Goat Anti-Mouse IgG(H+L), CL594-phalloidin (red).