

Maspin Monoclonal antibody

Catalog Number: 67633-1-Ig

Basic Information

Catalog Number:

67633-1-Ig

Size:

1600 µg/ml

Source:

Mouse

Isotype:

IgG2a

Immunogen Catalog Number:

AG19129

GenBank Accession Number:

BC020713

GeneID (NCBI):

5268

UNIPROT ID:

P36952

Full Name:

serpin peptidase inhibitor, clade B (ovalbumin), member 5

Calculated MW:

375 aa, 42 kDa

Observed MW:

38-40 kDa

Purification Method:

Protein A purification

CloneNo.:

3G5A3

Recommended Dilutions:

WB 1:1000-1:6000

IHC 1:150-1:600

IF/ICC 1:800-1:3200

Applications

Tested Applications:

WB, IF/ICC, IHC, ELISA

Species Specificity:

Human

Note-IHC: suggested antigen retrieval with TE buffer pH 9.0; (*) Alternatively, antigen retrieval may be performed with citrate buffer pH 6.0

Positive Controls:

WB : HepG2 cells, Human saliva, HeLa cells, A431 cells

IHC : human oesophagus cancer tissue,

IF/ICC : HEK-293 cells,

Background Information

SERPINB5, also named as PI-5, Maspin and Serpin B5, belongs to the serpin family and Ov-serpin subfamily. It is a tumor suppressor. It blocks the growth, invasion, and metastatic properties of mammary tumors. As it does not undergo the S (stressed) to R (relaxed) conformational transition characteristic of active serpins, SERPINB5 exhibits no serine protease inhibitory activity.

Storage

Storage:

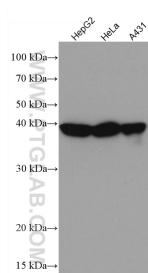
Store at -20°C. Stable for one year after shipment.

Storage Buffer:

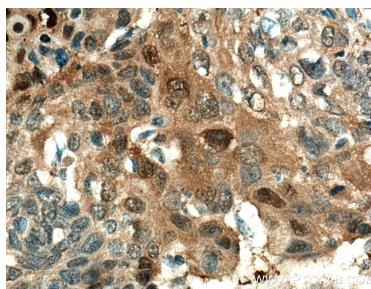
PBS with 0.02% sodium azide and 50% glycerol pH 7.3.

Aliquoting is unnecessary for -20°C storage

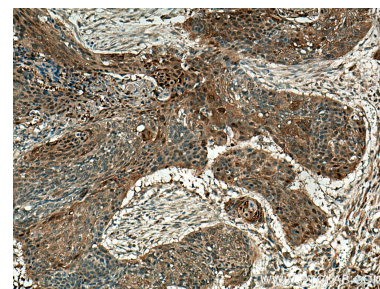
Selected Validation Data



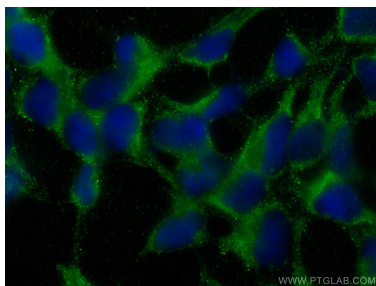
Various lysates were subjected to SDS PAGE followed by western blot with 67633-1-Ig (Maspin antibody) at dilution of 1:3000 incubated at room temperature for 1.5 hours.



Immunohistochemical analysis of paraffin-embedded human oesophagus cancer tissue slide using 67633-1-Ig (Maspin antibody) at dilution of 1:300 (under 40x lens). Heat mediated antigen retrieval with Tris-EDTA buffer (pH 9.0).



Immunohistochemical analysis of paraffin-embedded human oesophagus cancer tissue slide using 67633-1-Ig (Maspin antibody) at dilution of 1:300 (under 10x lens). Heat mediated antigen retrieval with Tris-EDTA buffer (pH 9.0).



Immunofluorescent analysis of (-20°C Ethanol) fixed HEK-293 cells using Maspin antibody (67633-1-Ig, Clone: 3G5A3) at dilution of 1:1600 and CoraLite®488-Conjugated AffiniPure Goat Anti-Mouse IgG(H+L) (SA00013-1).