

For Research Use Only

Ch-TOG Monoclonal antibody, PBS Only (Capture/Detector)

Catalog Number: 67631-1-PBS



Basic Information

Catalog Number: 67631-1-PBS	GenBank Accession Number: BC120869	Purification Method: Protein A purification
Size: 1mg/ml	GeneID (NCBI): 9793	CloneNo.: 1H5G1
Source: Mouse	UNIPROT ID: Q14008	
Isotype: IgG1	Full Name: cytoskeleton associated protein 5	
Immunogen Catalog Number: AG28770	Observed MW: 220-240 kDa	

Applications

Tested Applications:
WB, IHC, IF/ICC, Cytometric bead array, Indirect ELISA

Species Specificity:
human, mouse, rat, pig

Background Information

Ch-TOG (colonic hepatic tumor-overexpressed gene), also known as XMAP215 or CKAP5, is a microtubule polymerase which can promotes cytoplasmic microtubule nucleation and elongation. Through interacting with Aurora-A and TACC3, it plays a major role in organizing spindle poles.

Storage

Storage:
Store at -80°C.
The product is shipped with ice packs. Upon receipt, store it immediately at -80°C

Storage Buffer:
PBS Only

For technical support and original validation data for this product please contact:

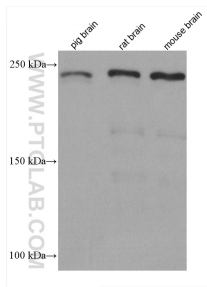
T: 4006900926

E: Proteintech-CN@ptglab.com

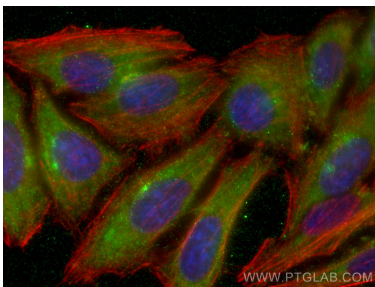
W: ptgcn.com

This product is exclusively available under Proteintech Group brand and is not available to purchase from any other manufacturer.

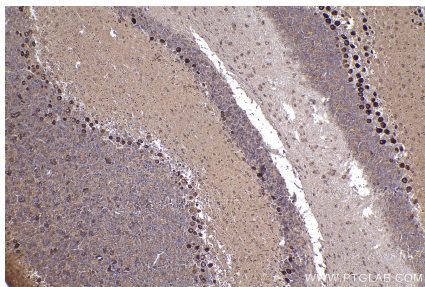
Selected Validation Data



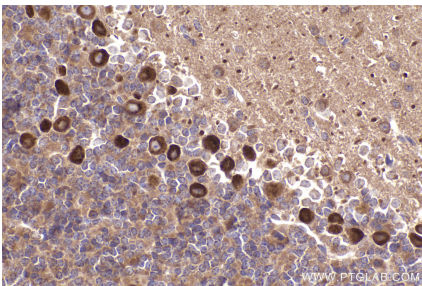
Various lysates were subjected to SDS PAGE followed by western blot with 67631-1-Ig (CKAP5 antibody) at dilution of 1:10000 incubated at room temperature for 1.5 hours. This data was developed using the same antibody clone with 67631-1-PBS in a different storage buffer formulation.



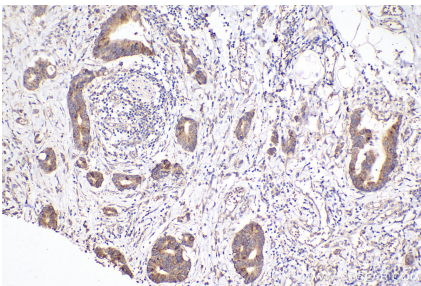
Immunofluorescent analysis of (-20°C Ethanol) fixed HepG2 cells using Ch-TOG antibody (67631-1-Ig, Clone: 1H5G1) at dilution of 1:4000 and CoraLite®488-Conjugated AffiniPure Goat Anti-Mouse IgG(H+L), CL594-Phalloidin (red). This data was developed using the same antibody clone with 67631-1-PBS in a different storage buffer formulation.



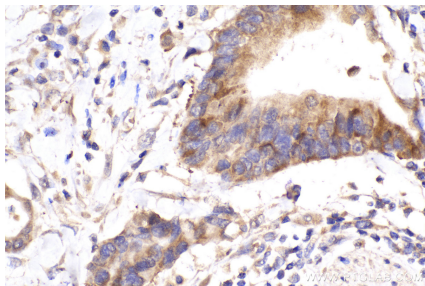
Immunohistochemical analysis of paraffin-embedded mouse cerebellum tissue slide using 67631-1-Ig (Ch-TOG antibody) at dilution of 1:500 (under 10x lens). Heat mediated antigen retrieval with Tris-EDTA buffer (pH 9.0). This data was developed using the same antibody clone with 67631-1-PBS in a different storage buffer formulation.



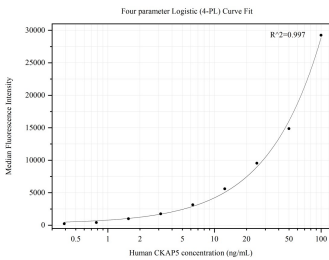
Immunohistochemical analysis of paraffin-embedded mouse cerebellum tissue slide using 67631-1-Ig (Ch-TOG antibody) at dilution of 1:500 (under 40x lens). Heat mediated antigen retrieval with Tris-EDTA buffer (pH 9.0). This data was developed using the same antibody clone with 67631-1-PBS in a different storage buffer formulation.



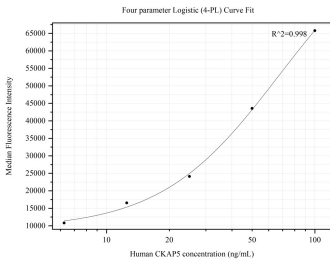
Immunohistochemical analysis of paraffin-embedded human rectal cancer tissue slide using 67631-1-Ig (Ch-TOG antibody) at dilution of 1:1000 (under 10x lens). Heat mediated antigen retrieval with Tris-EDTA buffer (pH 9.0). This data was developed using the same antibody clone with 67631-1-PBS in a different storage buffer formulation.



Immunohistochemical analysis of paraffin-embedded human rectal cancer tissue slide using 67631-1-Ig (Ch-TOG antibody) at dilution of 1:1000 (under 40x lens). Heat mediated antigen retrieval with Tris-EDTA buffer (pH 9.0). This data was developed using the same antibody clone with 67631-1-PBS in a different storage buffer formulation.



Cytometric bead array standard curve of MP50224-1, CKAP5 Monoclonal Matched Antibody Pair, PBS Only. Capture antibody: 67631-2-PBS. Detection antibody: 67631-1-PBS. Standard:Ag28770. Range: 0.391-100 ng/mL



Cytometric bead array standard curve of MP50224-2, CKAP5 Monoclonal Matched Antibody Pair, PBS Only. Capture antibody: 67631-1-PBS. Detection antibody: 67631-3-PBS. Standard:Ag28770. Range: 6.25-100 ng/mL