

For Research Use Only

# Ch-TOG Monoclonal antibody

Catalog Number: 67631-1-Ig



## Basic Information

Catalog Number:	67631-1-Ig	GenBank Accession Number:	BC120869	Purification Method:	Protein A purification
Size:	1000 ug/ml	GeneID (NCBI):	9793	CloneNo.:	1H5G1
Source:	Mouse	UNIPROT ID:	Q14008	Recommended Dilutions:	WB 1:5000-1:50000
Isotype:	IgG1	Full Name:	cytoskeleton associated protein 5	IHC 1:250-1:1000	IF/ICC 1:2000-1:8000
Immunogen Catalog Number:	AG28770	Observed MW:	220-240 kDa		

## Applications

**Tested Applications:**  
WB, IHC, IF/ICC, ELISA

**Species Specificity:**  
human, mouse, rat, pig

**Note-IHC: suggested antigen retrieval with TE buffer pH 9.0; (\*) Alternatively, antigen retrieval may be performed with citrate buffer pH 6.0**

### Positive Controls:

**WB :** pig brain tissue, HeLa cells, HepG2 cells, NCCIT cells, rat brain tissue, mouse brain tissue

**IHC :** mouse cerebellum tissue, human rectal cancer tissue

**IF/ICC :** HepG2 cells,

## Background Information

Ch-TOG (colonic hepatic tumor-overexpressed gene), also known as XMAP215 or CKAP5, is a microtubule polymerase which can promotes cytoplasmic microtubule nucleation and elongation. Through interacting with Aurora-A and TACC3, it plays a major role in organizing spindle poles.

## Storage

**Storage:**  
Store at -20°C. Stable for one year after shipment.

**Storage Buffer:**  
PBS with 0.02% sodium azide and 50% glycerol pH 7.3.

Aliquoting is unnecessary for -20°C storage

For technical support and original validation data for this product please contact:

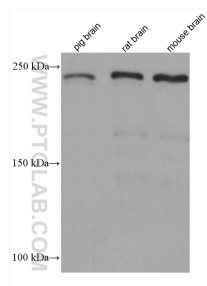
T: 4006900926

E: [Proteintech-CN@ptglab.com](mailto:Proteintech-CN@ptglab.com)

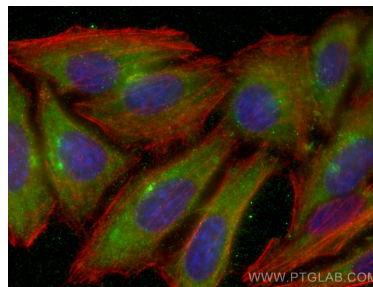
W: [ptgcn.com](http://ptgcn.com)

**This product is exclusively available under Proteintech Group brand and is not available to purchase from any other manufacturer.**

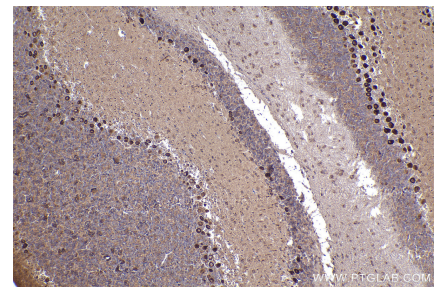
## Selected Validation Data



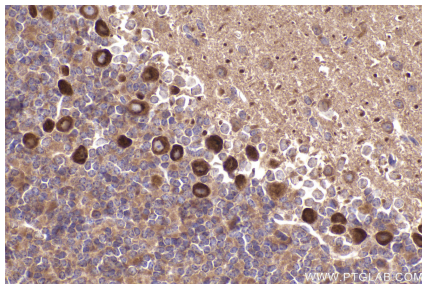
Various lysates were subjected to SDS PAGE followed by western blot with 67631-1-Ig (CKAP5 antibody) at dilution of 1:10000 incubated at room temperature for 1.5 hours.



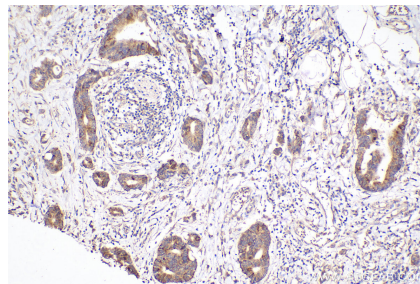
Immunofluorescent analysis of (-20°C Ethanol) fixed HepG2 cells using Ch-TOG antibody (67631-1-Ig, Clone: 1H5G1) at dilution of 1:4000 and CoraLite®488-Conjugated AffiniPure Goat Anti-Mouse IgG(H+L), CL594-Phalloidin (red).



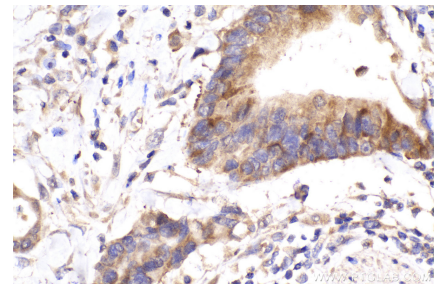
Immunohistochemical analysis of paraffin-embedded mouse cerebellum tissue slide using 67631-1-Ig (Ch-TOG antibody) at dilution of 1:500 (under 10x lens). Heat mediated antigen retrieval with Tris-EDTA buffer (pH 9.0).



Immunohistochemical analysis of paraffin-embedded mouse cerebellum tissue slide using 67631-1-Ig (Ch-TOG antibody) at dilution of 1:500 (under 40x lens). Heat mediated antigen retrieval with Tris-EDTA buffer (pH 9.0).



Immunohistochemical analysis of paraffin-embedded human rectal cancer tissue slide using 67631-1-Ig (Ch-TOG antibody) at dilution of 1:1000 (under 10x lens). Heat mediated antigen retrieval with Tris-EDTA buffer (pH 9.0).



Immunohistochemical analysis of paraffin-embedded human rectal cancer tissue slide using 67631-1-Ig (Ch-TOG antibody) at dilution of 1:1000 (under 40x lens). Heat mediated antigen retrieval with Tris-EDTA buffer (pH 9.0).