

For Research Use Only

# CPS1 Monoclonal antibody, PBS Only

Catalog Number: 67630-1-PBS



## Basic Information

Catalog Number:

67630-1-PBS

Size:

1 mg/ml

Source:

Mouse

Isotype:

IgG1

GenBank Accession Number:

BC140943

GeneID (NCBI):

1373

UNIPROT ID:

P31327

Full Name:

carbamoyl-phosphate synthetase 1,  
mitochondrial

Calculated MW:

165 kDa

Observed MW:

140-165 kDa

Purification Method:

Protein A purification

CloneNo.:

2A12A4

## Applications

Tested Applications:

WB, ELISA

Species Specificity:

Human, mouse, rat

## Background Information

CPS1 is an enzyme that catalyzes the first committed step of the hepatic urea cycle, which is important in the removal of excess urea from cells. Expressed primarily in the liver and small intestine, CPS1 can be used as a marker for mitochondria in these tissues. In addition, CPS1 expression appears to be lost in adenocarcinomas of the small intestine.

## Storage

Storage:

Store at -80°C.

**The product is shipped with ice packs. Upon receipt, store it immediately at -80°C**

Storage Buffer:

PBS only

For technical support and original validation data for this product please contact:

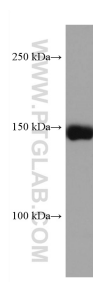
T: 4006900926

E: [Proteintech-CN@ptglab.com](mailto:Proteintech-CN@ptglab.com)

W: [ptgcn.com](http://ptgcn.com)

**This product is exclusively available under Proteintech Group brand and is not available to purchase from any other manufacturer.**

## Selected Validation Data



mouse liver tissue were subjected to SDS PAGE followed by western blot with 67630-1-Ig (CPS1 antibody) at dilution of 1:5000 incubated at room temperature for 1.5 hours. This data was developed using the same antibody clone with 67630-1-PBS in a different storage buffer formulation.