

For Research Use Only

# CREB3L1,OASIS Monoclonal antibody, PBS Only (Capture)

Catalog Number:67617-1-PBS



## Basic Information

Catalog Number:

67617-1-PBS

Size:

1mg/ml

Source:

Mouse

Isotype:

IgG1

Immunogen Catalog Number:

AG28042

GenBank Accession Number:

BC015781

GeneID (NCBI):

90993

UNIPROT ID:

Q96BA8

Full Name:

cAMP responsive element binding  
protein 3-like 1

Calculated MW:

57 kDa

Observed MW:

58 kDa

Purification Method:

Protein G purification

CloneNo.:

2B5B4

## Applications

Tested Applications:

WB, FC (Intra), Cytometric bead array, Indirect ELISA

Species Specificity:

human, mouse, rat

## Background Information

Cyclic AMP-responsive element-binding protein 3-like protein 1(CREB3L1) belongs to a family of transcription factors that are synthesized as membrane-bound precursors in the endoplasmic reticulum (ER) and then transported to the Golgi where they are activated through regulated intramembrane proteolysis (RIP). Also it participates in ER-stress response in astrocytes in the central nervous system. It may has a role in gliosis, and involves in activation of transcription through box-B element but not CRE. CREB3L1 acts as a transcription repressor in proliferation of virus-infected cell. The full-length precursor form (approximately 84 kDa) of CREB3L1 and the matured form of CREB3L1 is 58 kDa. (PMID: 20668028)

## Storage

Storage:

Store at -80°C.

The product is shipped with ice packs. Upon receipt, store it immediately at -80°C

Storage Buffer:

PBS Only

For technical support and original validation data for this product please contact:

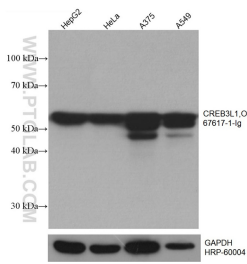
T: 4006900926

E: [Proteintech-CN@ptglab.com](mailto:Proteintech-CN@ptglab.com)

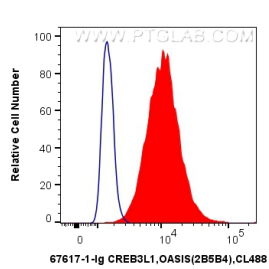
W: [ptgcn.com](http://ptgcn.com)

This product is exclusively available under Proteintech Group brand and is not available to purchase from any other manufacturer.

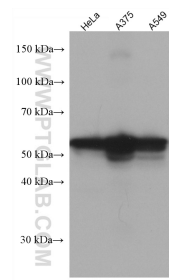
Selected Validation Data



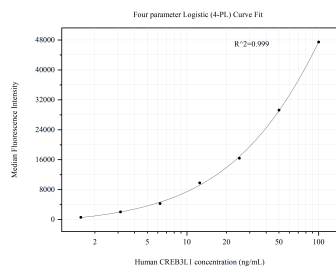
Various lysates were subjected to SDS PAGE followed by western blot with 67617-1-Ig (CREB3L1,OASIS antibody) at dilution of 1:50000 incubated at room temperature for 1.5 hours. The membrane was stripped and reblotted with HRP-conjugated GAPDH Monoclonal antibody (HRP-60004) as loading control. This data was developed using the same antibody clone with 67617-1-PBS in a different storage buffer formulation.



1X10<sup>6</sup> HepG2 cells were intracellularly stained with 0.5 ug Anti-Human CREB3L1,OASIS (67617-1-Ig, Clone:2B5B4) and CoraLite®488-Conjugated AffiniPure Goat Anti-Mouse IgG(H+L) at dilution 1:1000 (red), or 0.5 ug Control Antibody. Cells were fixed with 4% PFA and permeabilized with Flow Cytometry Perm Buffer (PF00011-C). This data was developed using the same antibody clone with 67617-1-PBS in a different storage buffer formulation.



Various lysates were subjected to SDS PAGE followed by western blot with 67617-1-Ig (CREB3L1,OASIS antibody) at dilution of 1:5000 incubated at room temperature for 1.5 hours. This data was developed using the same antibody clone with 67617-1-PBS in a different storage buffer formulation.



Cytometric bead array standard curve of MP50829-2, CREB3L1,OASIS Monoclonal Matched Antibody Pair, PBS Only. Capture antibody: 67617-1-PBS. Detection antibody: 67617-4-PBS. Standard:Ag28042. Range: 1.563-100 ng/mL